

MUHAMMAD ALIMUMAL

Thesis portfolio





This is a rust painting, using old metal objects, water and salt, the decay of the object, and fresh rust made in the process. It's intriguing for me how the organisms eating away at the object can be used as pigment, into a manipulated composition. The process of this can be very time consuming, as certain areas on this painting had to be watered for weeks to get the desired effect.

Dimensions: 75" by 100"  
Medium: Rust on Canvas

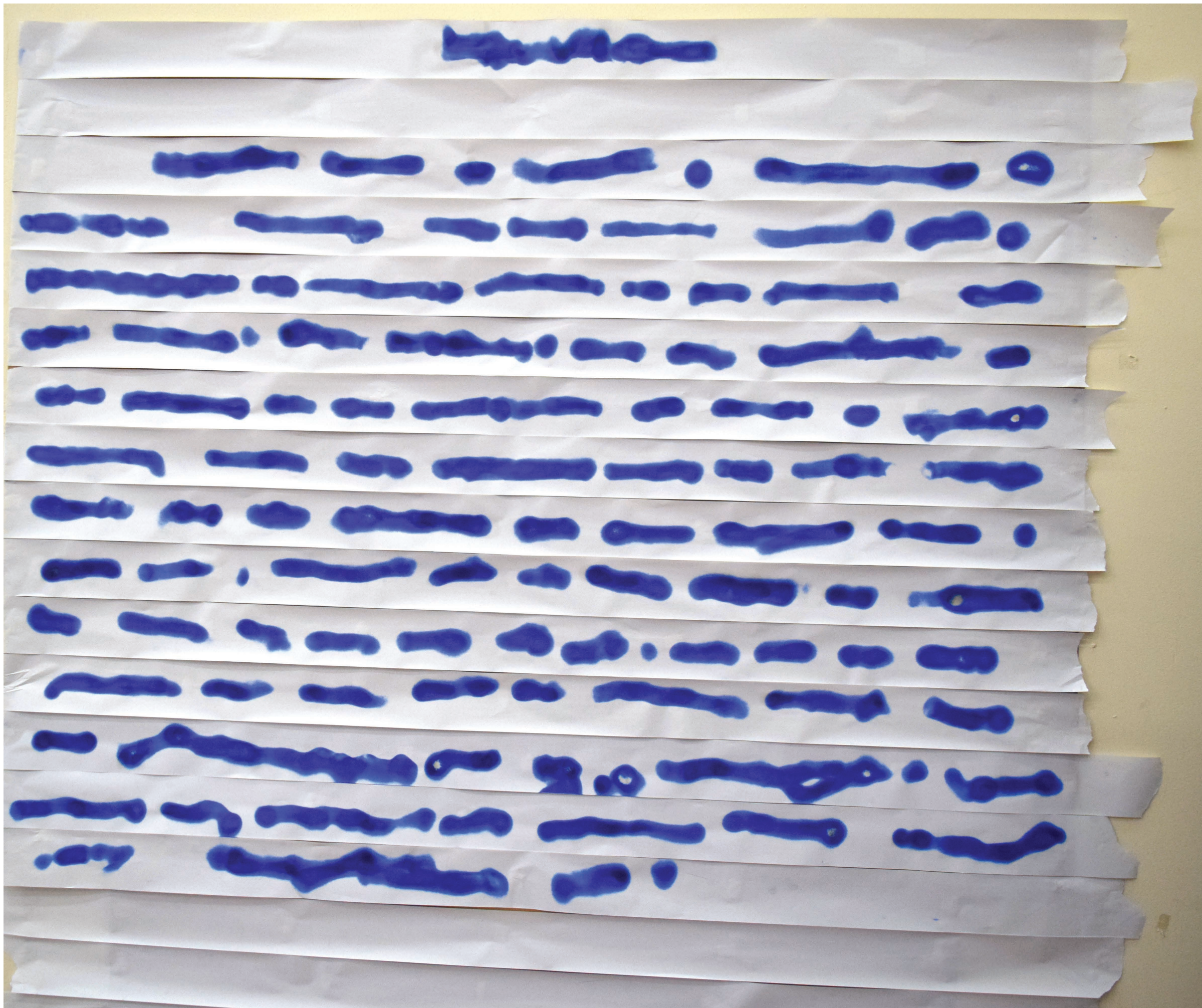




A traditional canvas is stretched on a wooden frame. Here, I have not used a frame, but a bed of nails. These nails are grouped off the centre Of the work. Once it's watered and pulled out, the nails give off rust to the canvas and gets stretched in a way where it protrudes off the canvas

Dimensions: 36" by 50"  
Medium: Rust on Canvas





This work is done with a paper roll of thermal reactive paper and lighter. I used it in a way where I used a piece of text as a drawing in a way where its not readable, or it reminds you of a dried paper, that had text on it, and then has gotten wet and the ink has smudged.

Dimensions: 48" by 100"  
Medium: Thermal Reative Paper and heat





The mould of this work was made according to the size of the fruit, so the walls of the fruit and the walls of the mould touch. The remaining negative space was filled with resin. Causing the orange to decompose, in contact with air, without any external influences. There's contrasts to the work, it deals with ideals of positive and negative space, youth and age, organic and man made, life and death so many other come to my mind.



Dimensions: 3.5" by 3.6" by 3"  
Medium: orange, resin





The same work from the previous slide, is here  
tagged after six months.





This is a work where organs and guts, of chickens are used as the material that make the work. I pressed hearts and intestines here, in glass. The image above is about three weeks old from when I had first done this, the fact that a semi solid, separates its liquid and dries out, much like paint in my mind. As this decomposes the fluids run out the side, and insects go in, and eat away at the decomposing flesh, yet in process rebirth or these insects take place.

Dimensions: 6" by 12"  
Medium: glass and offal





This is very similar to the last work, here we have lungs, a stomach, testicles, intestines, and a whole wing of the bird. composed and pressed in a composition.

Dimensions: 24" by 12"

Mediums: offal, wing, in glass





A deconstructed garden presented in a lunch tray. The things in resin change colour over time. This work highlights the depletion of resources and polymers and artificial materials taking over the environment.

Dimensions: 8.5" by 15"

Medium: collection from a garden, resin, plastic tray





This photo and the photo after are x ray films. Tampered with heat, light, pressure and moisture. The damage converts information that is usually visible and these elements alter the chemical composition of the surface of the x ray film.

Dimensions: 14" by 8"  
Medium: X ray film





Dimensions: 14" by 8"  
Medium: X ray film



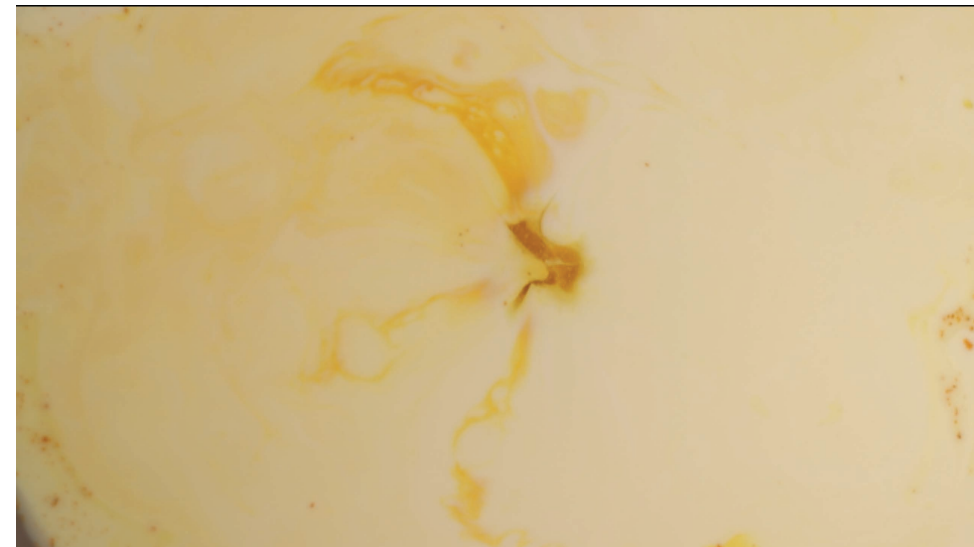
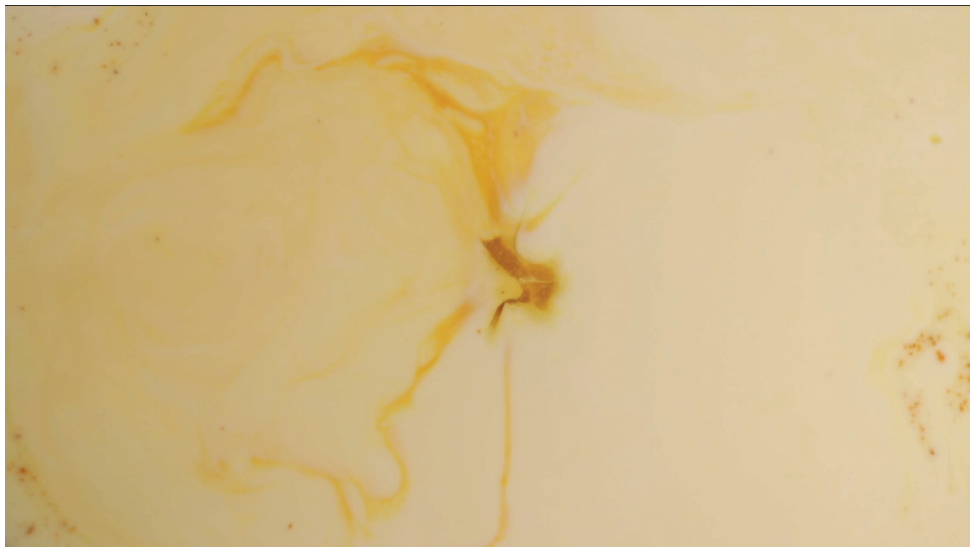
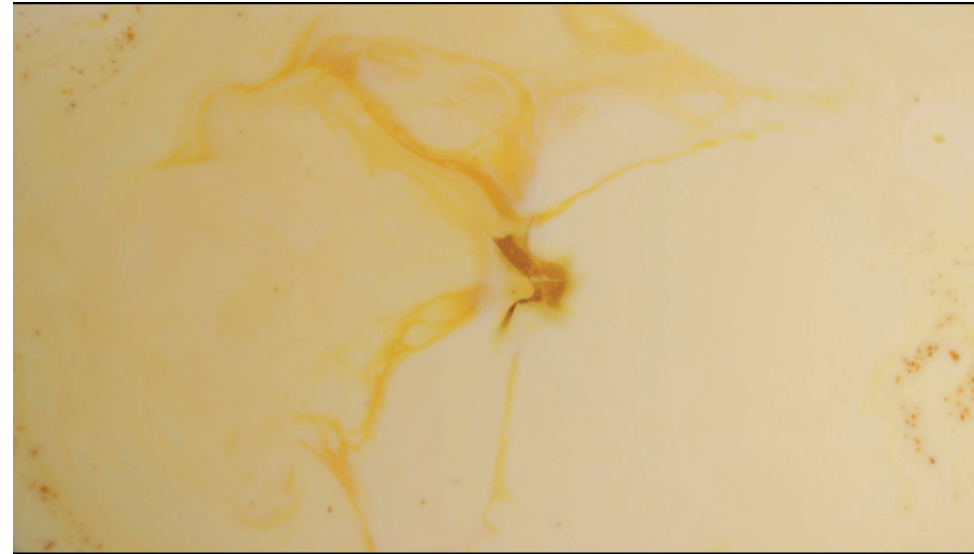


This is the reverse of a painting. The corrosion of already present pigment on a surface. The corrosion of the dye makes the final work. I used bleach and black fabric and it alters the colour of the surface, which is me exploring painting from a alternative approach.

Dimensions: 48" by 120"

Medium: bleach on black dyed cotton





A painting that performs and comes to life temporarily. The chemical reaction causes surface tension, caused by the acids and the fats reacting, hence creating movement within the liquid. Therefore any pigment in the milk, and it also moves pigment around. The reaction is a temporary one and dies out usually in about thirty minutes.

Medium: video of milk, turmeric and soap





Here, the work exists within the veins, or water capillaries, of the flower. The painting takes place on a cellular level, inside a natural 3D object temporarily. I fed the flower a UV dye along with its water, hence altering the chemical structure of the veins of the plant. In normal light the flower maintains its normal appearance, whereas under a blacklight or UV light, it completely comes up with a new appearance, one lit up, almost as if it's electrically charged, and starts to take on a mechanical outlook.

Dimension: of a flower  
Medium: Flower, UV dye

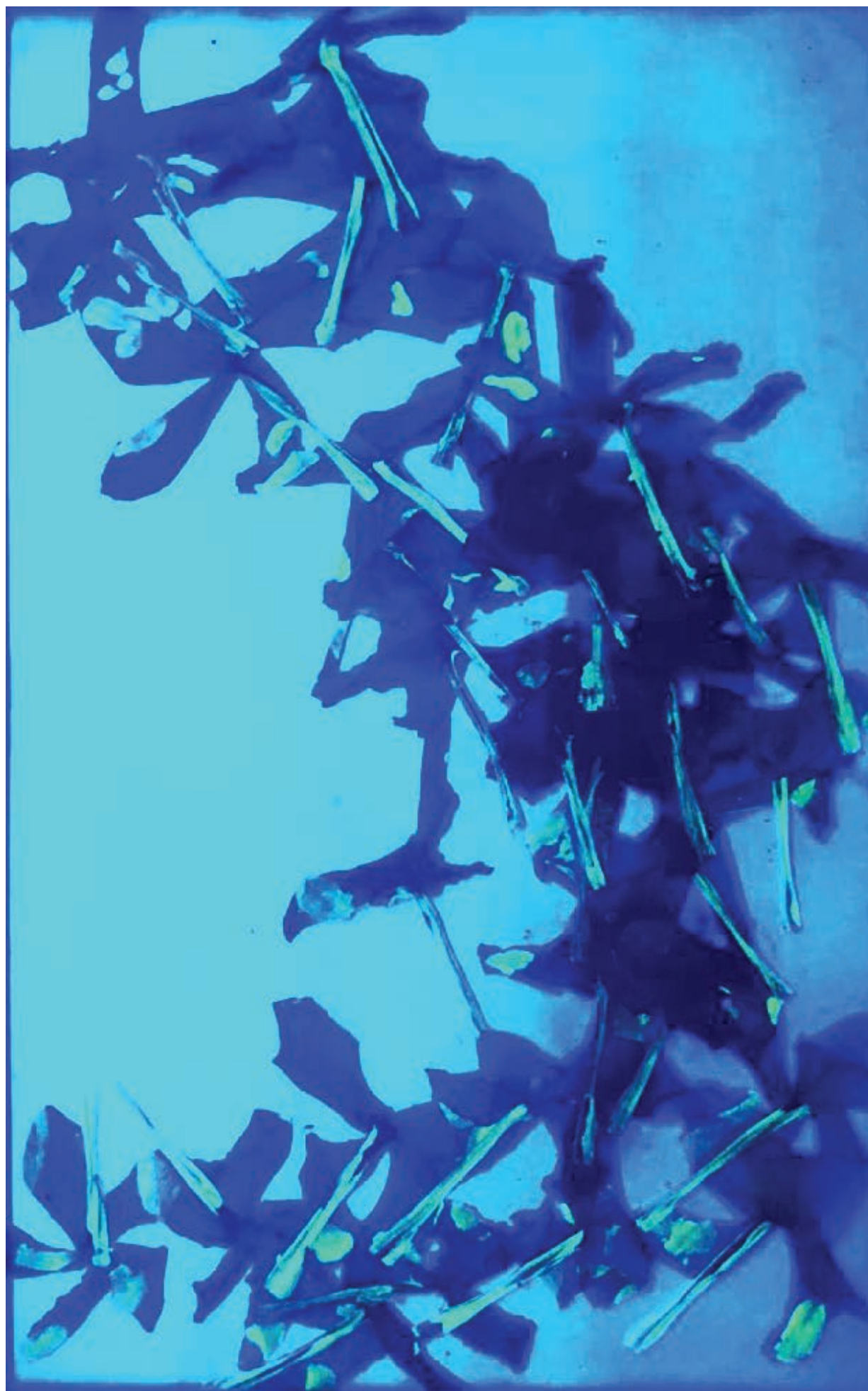




A collection of flowers from the tree in my garden, where throughout the year there's fallen flowers. This gathering is from one day, and is then photographed.

Dimensions: 11" by 16"  
Medium: photograph



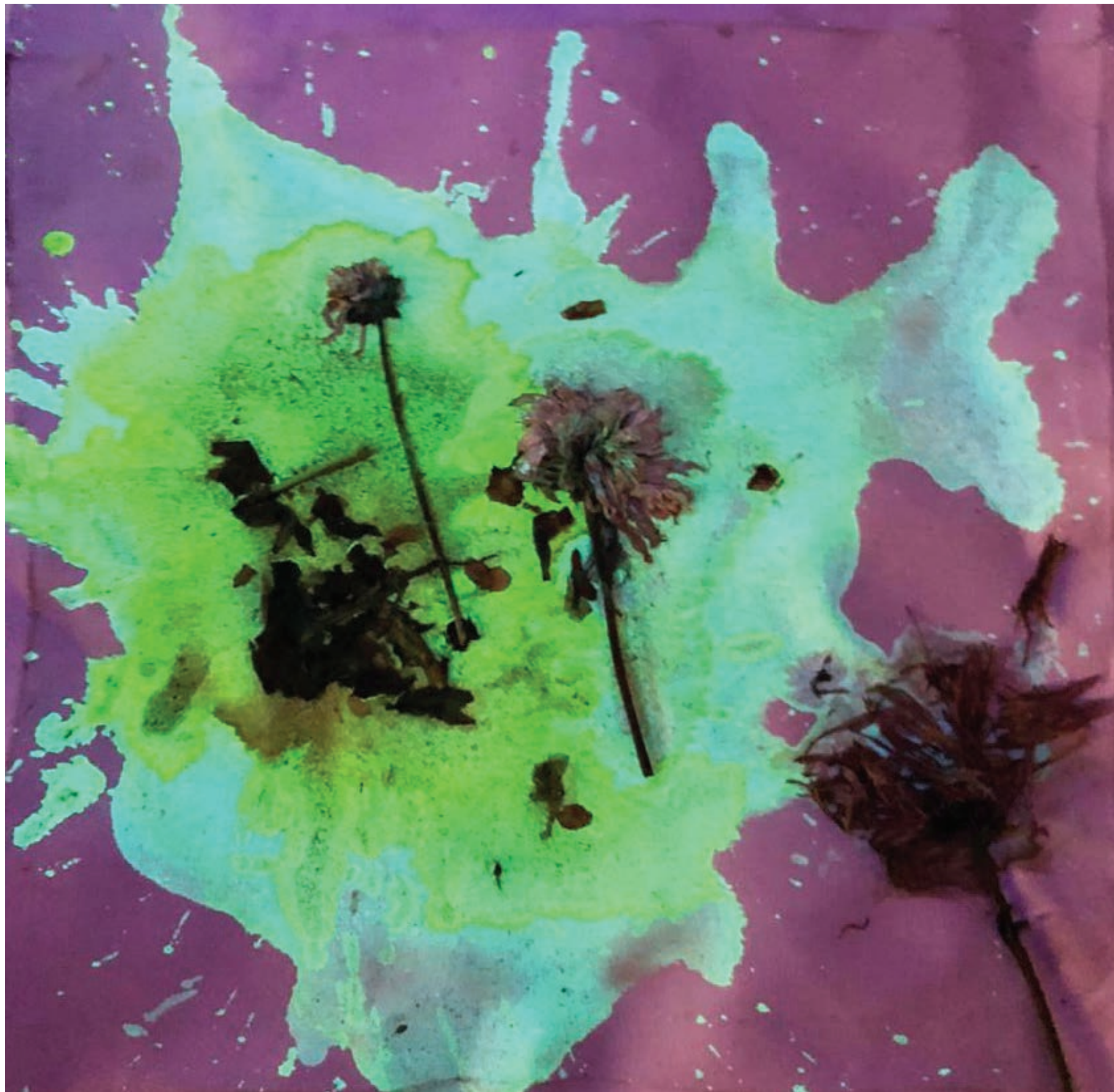


The same collection of flowers are painted over with a UV dye, and are pressed in a frame, under a UV light looking like a light box.

Dimension: 4" by 8"

Medium: pressed flowers, painted with UV pigment

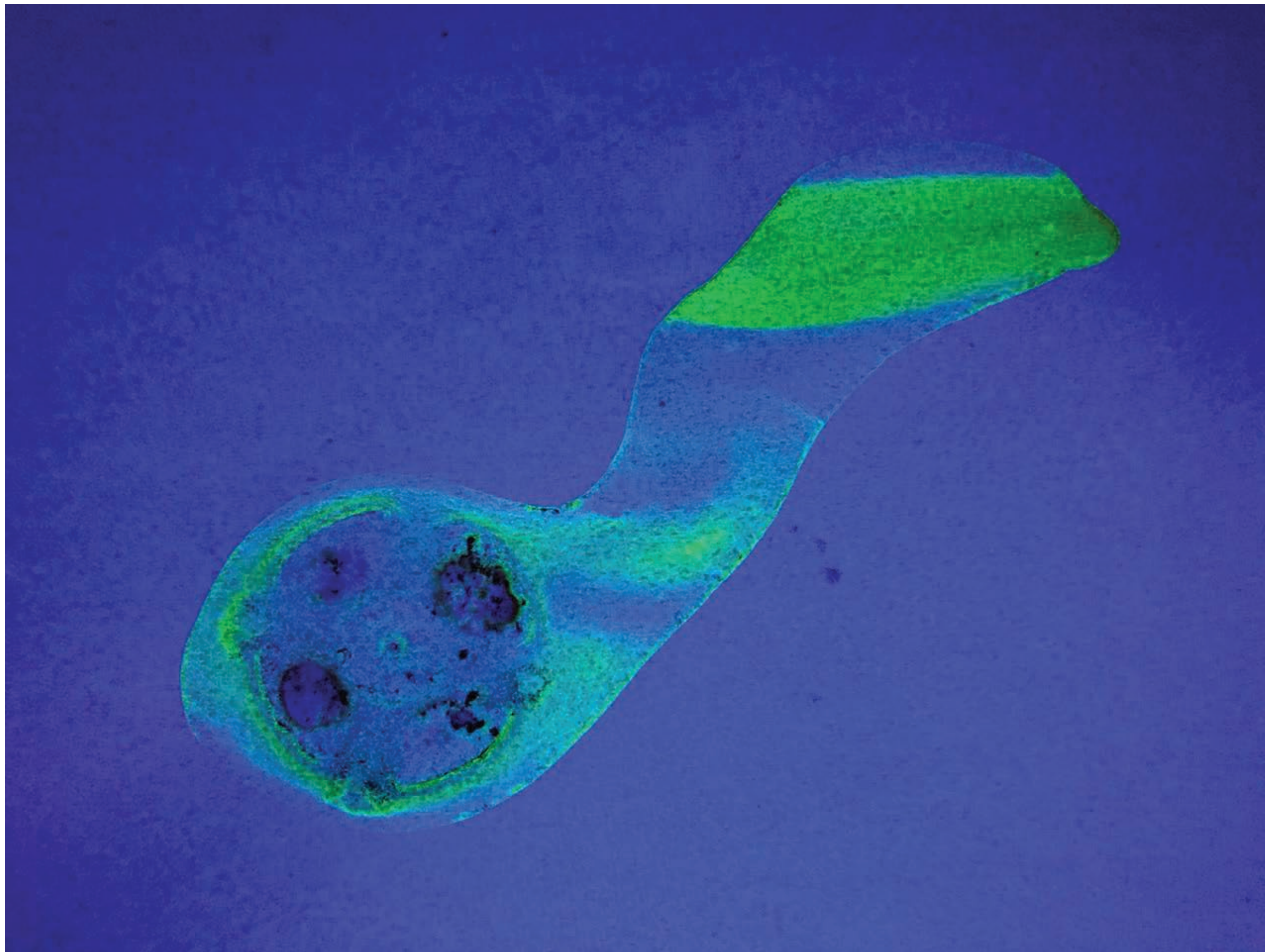




Here I took the fresh flowers and the mixture of the dye and water I was feeding the plants and passed it from a print making machine.

Dimensions: 12" by 12  
Medium: flowers, canvas, uv dye









This is an arranged sculpture from old car parts and wood. I've grown mould on the forms that remind me of architecture. To signify the society we live in.

Dimensions: 14" by 32"

Medium: metal plates, wood, and mould





These are pieces of unstitched cotton fabric, that are hand died, with turmeric and red cabbage. These dyes are PH reactive, and change colour on contact with different PH values. For example, the red cabbage, dyes the fabric lilac, when its in contact with something like sweat, or vinegar that is acidic it changes to pink, whereas if its in contact with something basic in PH it turns blue. Here these pieces are stiched together and theres the same liquids on both the fabric and it changes to very different hues.

Dimensions: 8" by 14"

Medium: Cotton, with natural dyes, exposed to vinegar, and baking soda





Following are the series of metal sheets that have been treated with different chemical processes to expose different colour that are not usually visible.

Serial no: 30  
Dimensions: 2" by 5"  
Medium: copper





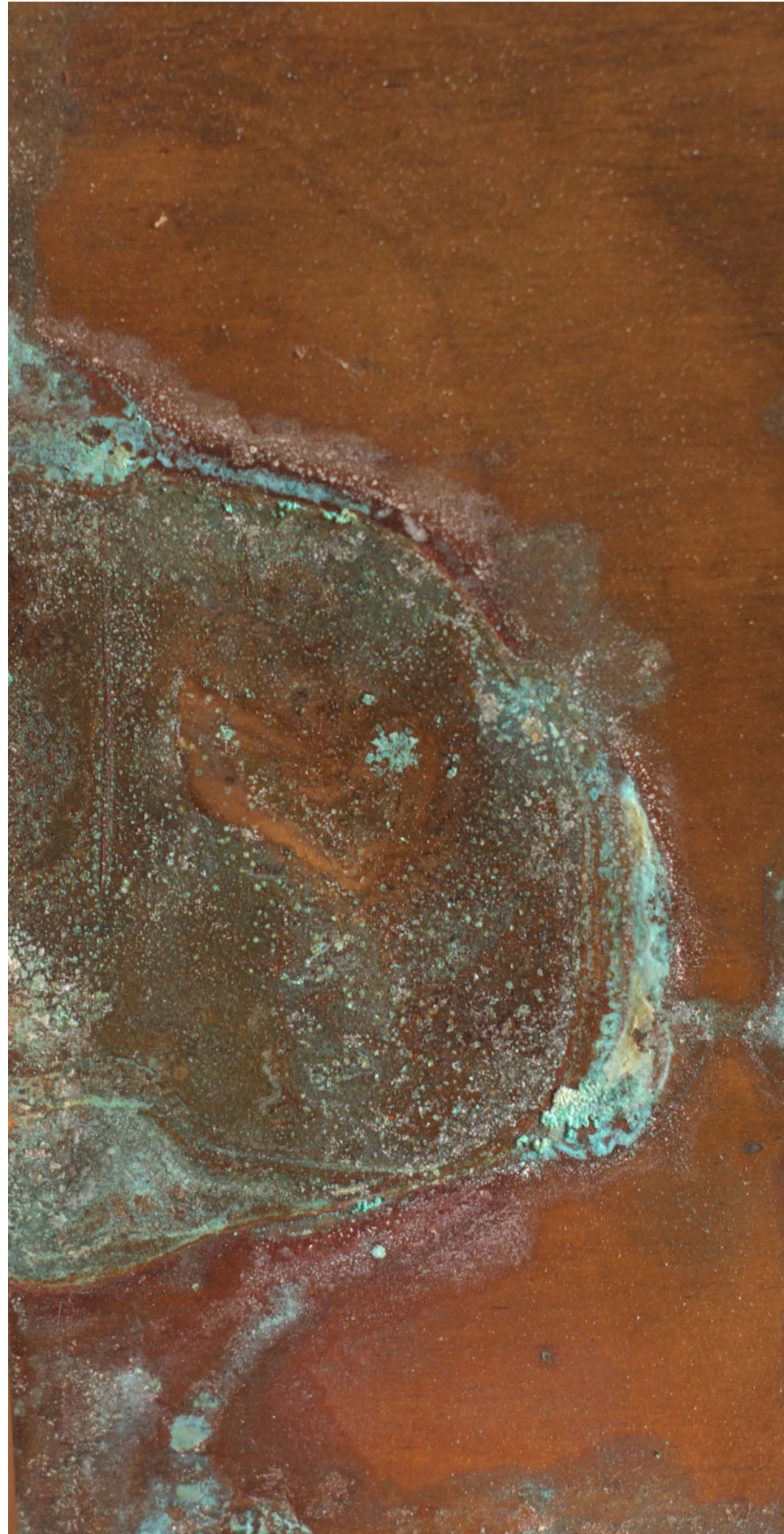
Serial no: 42  
Dimensions: 4" by 7"  
Medium: copper





Serial no: 50  
Dimensions: 7" by 13"  
Medium: copper





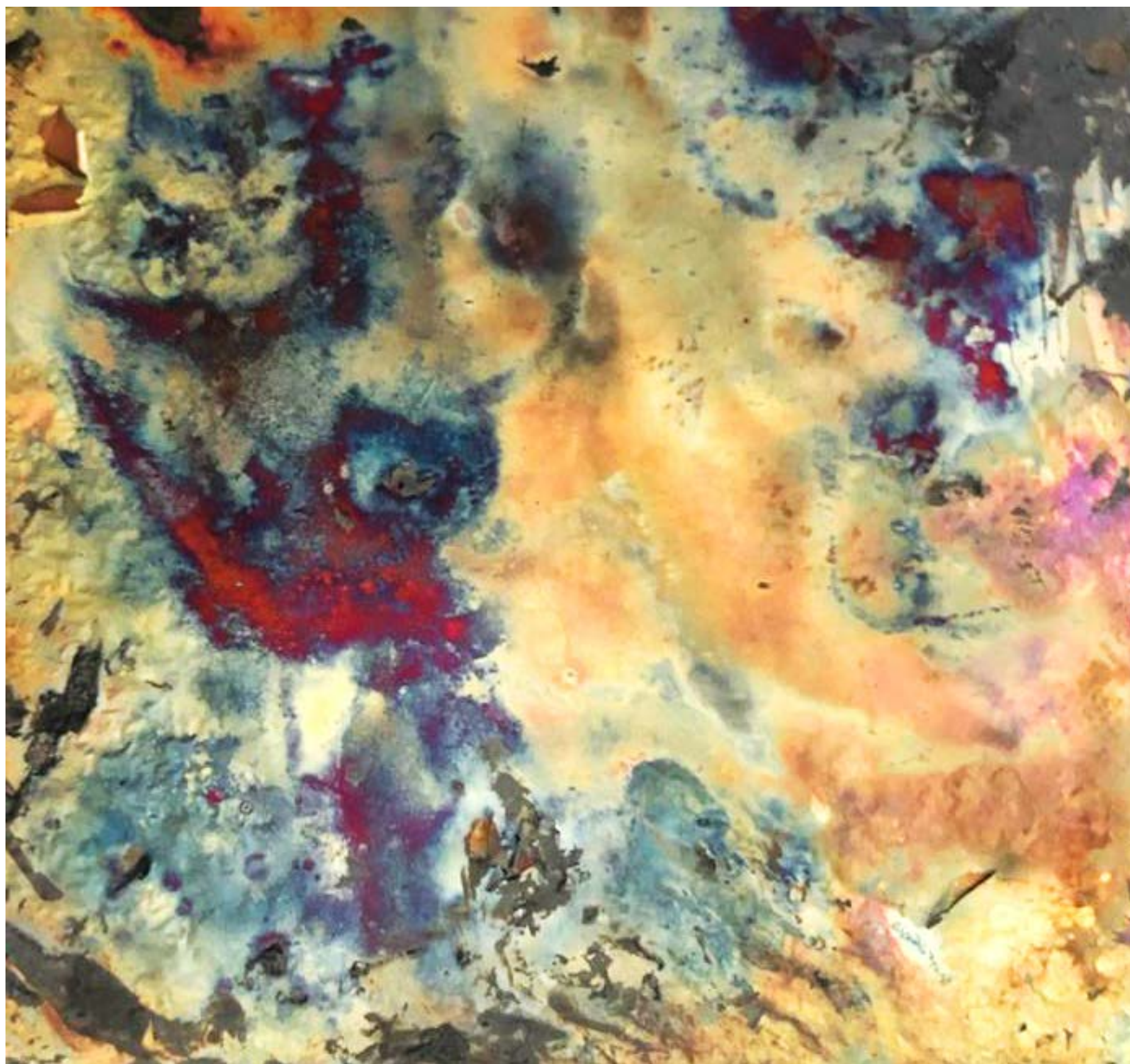
Serial no: 10  
Dimensions: 3.5" by 8"  
Medium: brass





Serial no: 56  
Dimensions: 10" by 5.5"  
Medium: stainless steel





Serial no: 27  
Dimensions: 1.5" by 1.5"  
Medium: Copper





Serial no: 15  
Dimensions: 1.5" by 4"  
Medium: Copper





Serial no: 18  
Dimensions: 2" by 5"  
Medium: Iron





This is a paintin made out of spinach purree.  
This was made in early days of quarantine.

Dimensions: 44" by 100"  
Medium: Spinach on cotton





Beetroot purree is used here to create this work.

Dimensions: 156" by 78"

Medium: beetroot and canvas



# BIORHYTHMIC CIRCUITION

a short art film



older work

Not related to the thesis





Dimensions: 33" by 49"  
Medium: photographs of  
composed hair







# Reconciliation with peace

This was a work made for asia peace festival to promote peace around asia  
Artists from most asian countries had sent in their work. The exhibit in  
Pakistan was curated by Mehreen Hashmi.





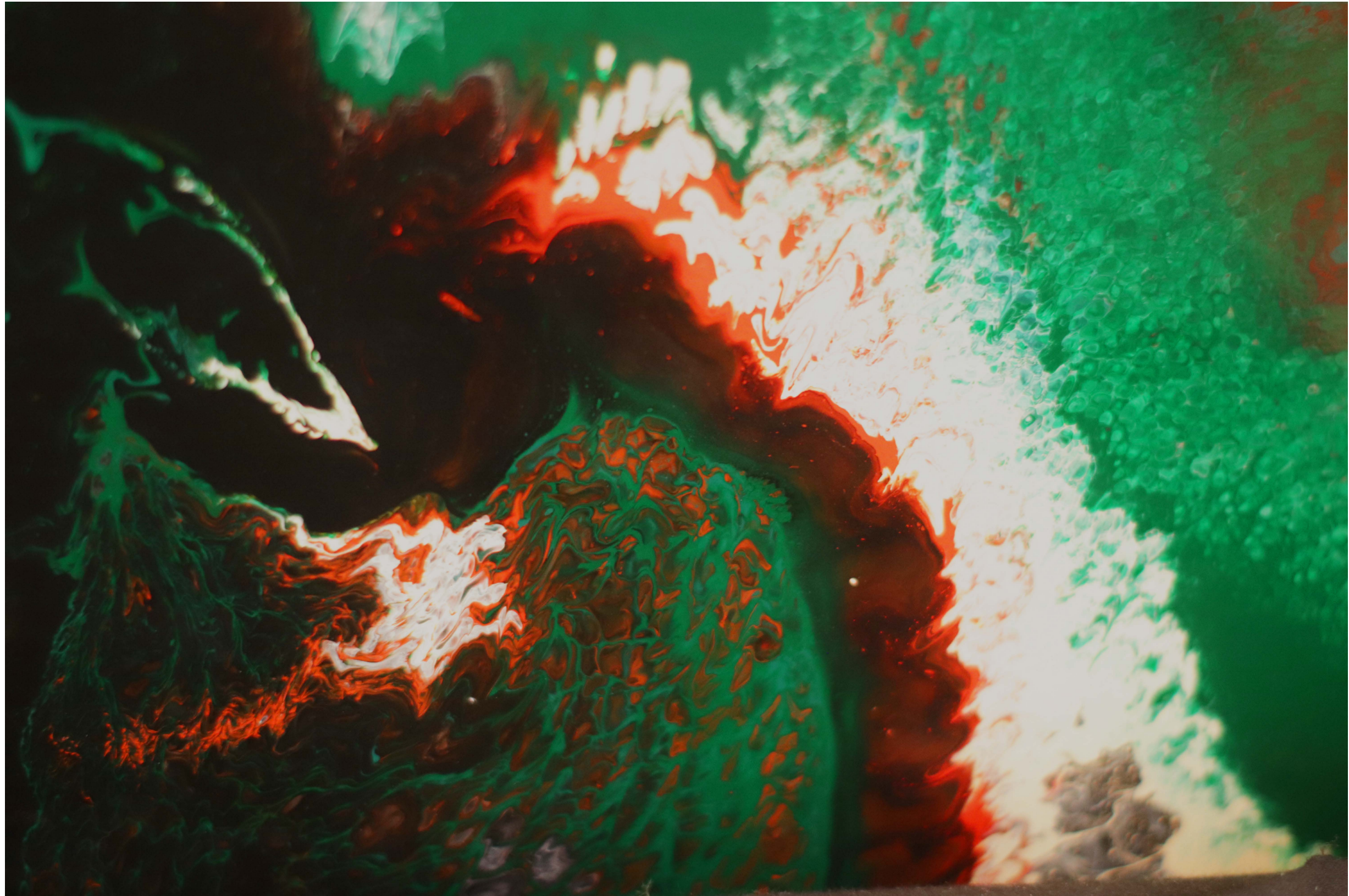
Dimensions: 33" by 49"  
Medium: photographs of  
composed hair





Dimensions: 33" by 49"  
Medium: photographs of  
composed hair



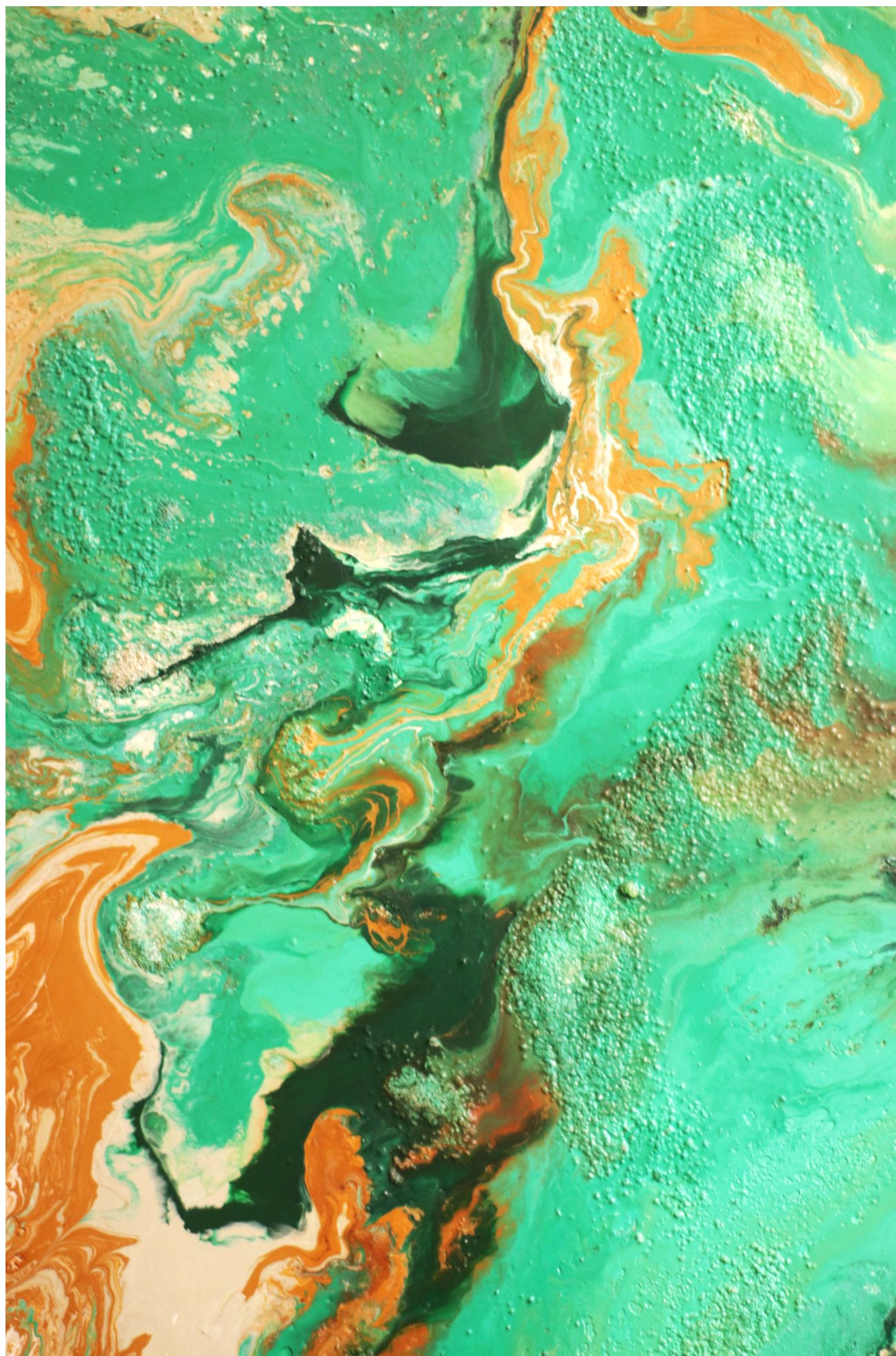


This was a research based work, where I conducted first hand research. I used different chemicals and chemical processes, and introduced them to enamel paint, recorded my findings and then composed these larger scales work from those experiments.

Dimensions: 24" by 48"

Medium: enamel and fire on wood





Dimensions: 24" by 48"  
Medium: acids, enamel, on wood





Dimensions: 24" by 48"  
Medium: enamels, acid, bleach,  
salts on wood