



Utopia

Farah Kanwal

F2016-210

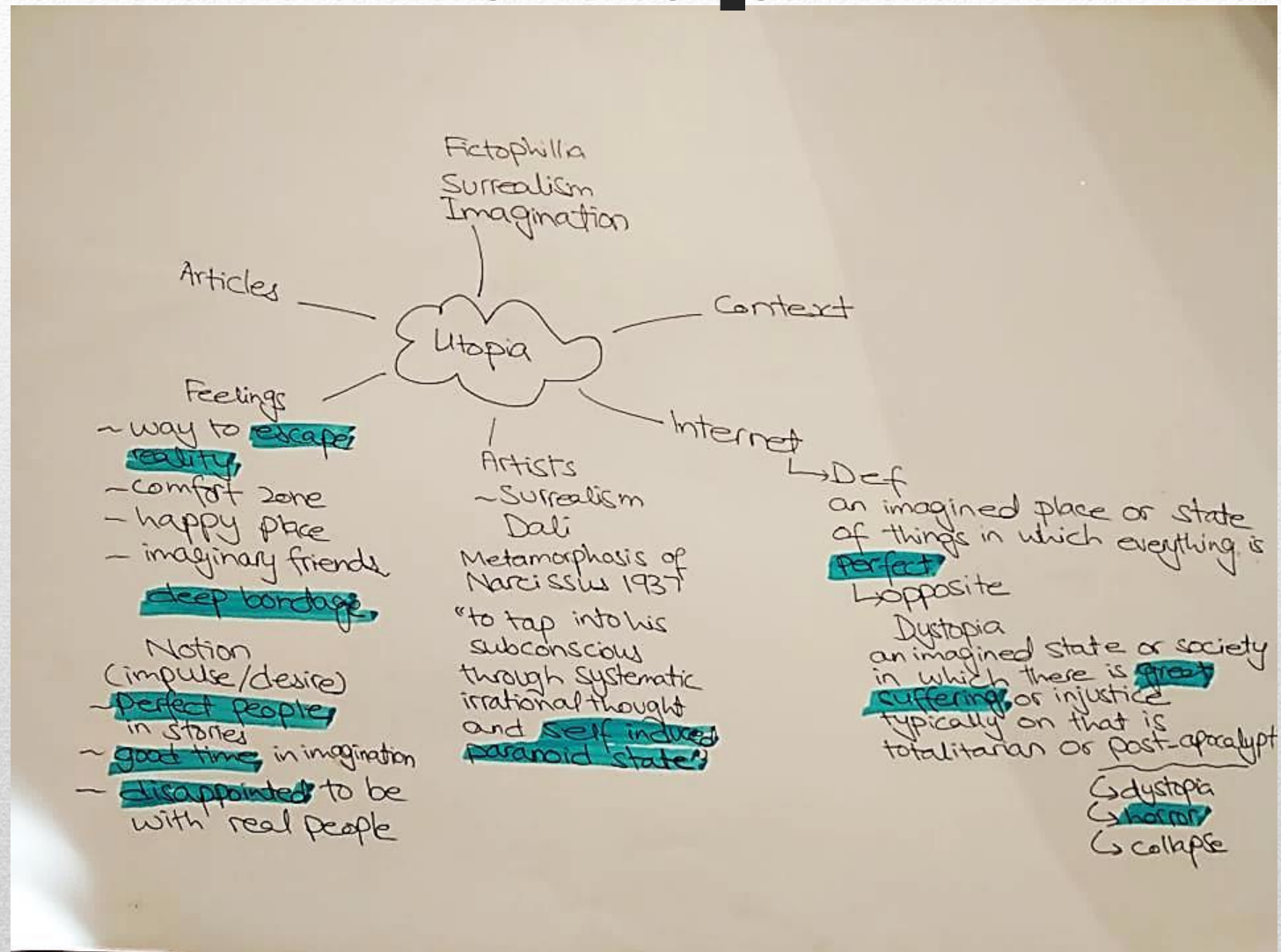
Utopia

I take Surrealist conventions to make my compositions which are based on my imagination and daydreams. The journey of my work began with studying Surrealism which focuses on utopian dreams and the subconscious mind.

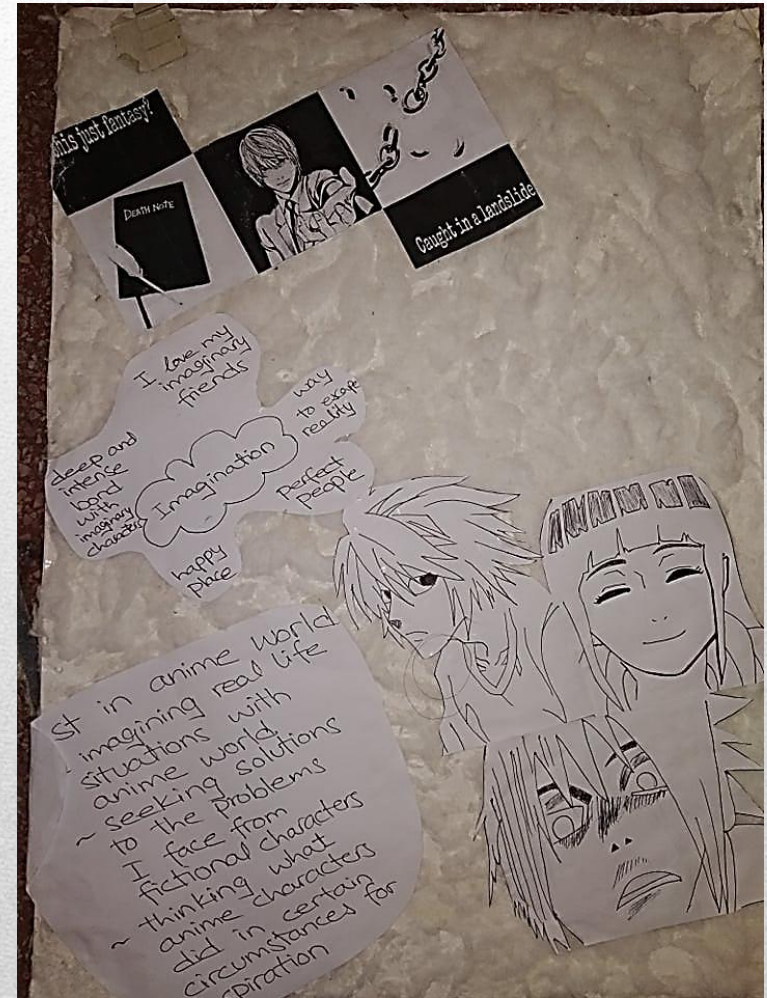
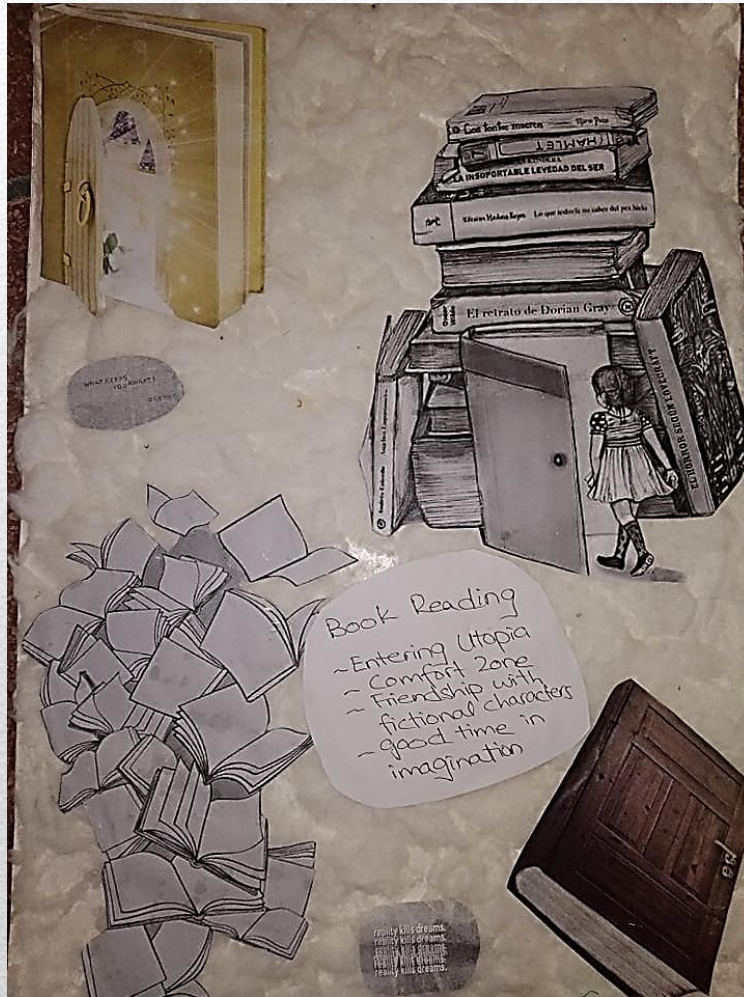
I started reading Salvador Dali's paintings and artworks as he was one of the key figures of the Surrealism Art Movement and his works are greatly influenced by dreams. I started off my work by appropriating Dali's paintings. I incorporated the fiction I dreamt about in those paintings. Later, I kept on developing my own images encompassing my own imaginations and thoughts. The color pallet of my paintings is deeply influenced by the appropriations I made previously. I fabricated those images developing them into textile paintings. I used hand embroidery, machine embroidery and applique as a medium to add texture and richness to my work. Later these paintings were developed into furniture as I wanted to give my paintings a 3D form and life of its own.

The furniture pieces I designed are developed from altered organic forms which support and help to understand my idea of a dreamy world better. The main idea is to visualize my mental imageries and mind recollections and aims to make the viewer enter my fantasies and thoughts i.e. my Utopia through their mind's eye. I want my art pieces to be lyrical, expressing my emotions and dreams in an imaginative and beautiful way. The furniture I designed is inventive and labyrinthine in shape and non-existent hence infusing with the dreamlike Surreal visuals making the idea of providing a dream like experience stronger and denser adding more intensity into the concept.

Mind Map



Visual Board



Artist Inspirations

Lila Jang



Salvador Dali



Dali's Paintings Appropriations



- Re-appropriation of the painting The Burning Giraffe by Dali
 - Story of Zumar, a fictional character from the novel, Namal by Nimra Ahmed
 - This girl lost her kidney in a family conflict
 - Dali painted this before his exile and this painting depicts his personal struggles
 - I aimed to showed the personal struggles of Zumar as this character was close to my dreamy self
-



- Re-appropriation of the painting The Ghost of Vermeer of Delft Which Can Be Used As a Table by Dali
 - Dali expressed his admiration for a painter Johannes Vermeer by painting his portrait
 - Vermeer's leg serves as a table with a bottle and a glass
 - I painted my favourite character, Hashim again from the novel Namal
 - As Hashim is a lawyer so on his leg sits a gavel
 - This symbolizes his catch-up phrase "Hashim sb sanbhaal le ga" meaning "Hashim will take care of everything" so the table symbolizes a support that the table gives
-



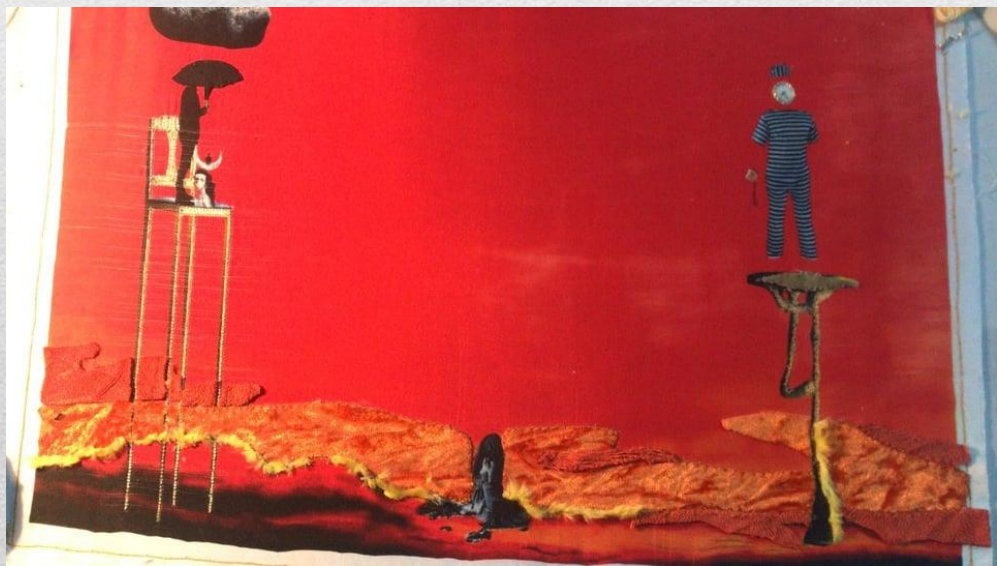
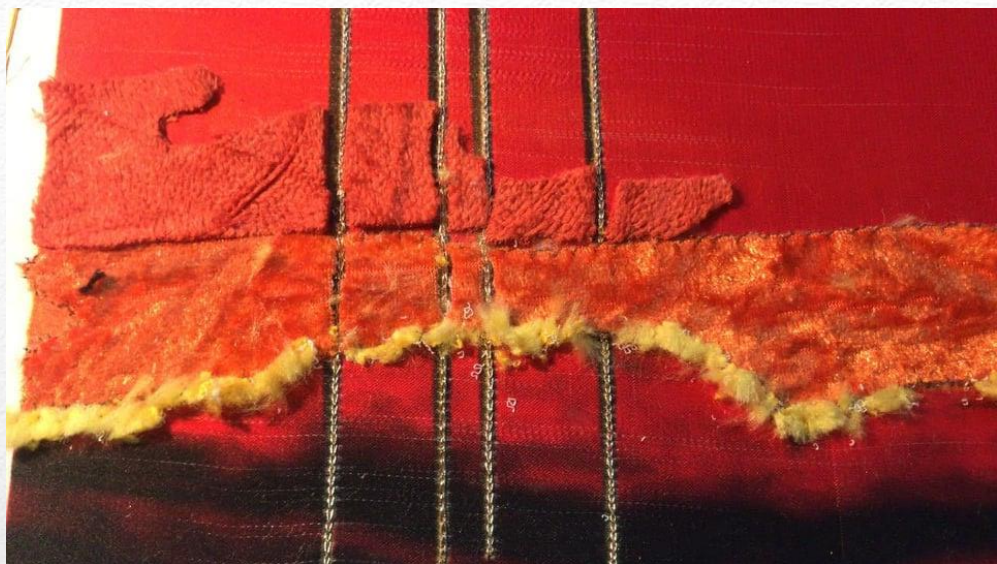
- Re-appropriation of the painting, The Elephants by Dali
 - Elephants often viewed as symbols of strength, dominance and power due to their bulk and weight
 - This painting includes the fictional characters , Hashim , Zumar and Faris
 - On the mushroom is Faris , wrongly accused and sent to jail and waiting for the right time- the mushroom symbolizes his "less strength"
 - On the golden chair is Hashim, protecting his narcissistic mother and over protected brother
 - The golden chair and the suit depicts his "more strength"
 - This re- appropriation showed the weight everyone carried just like The Elephants in Dali's painting
 - Between them is Zumar , the victim of rivalry of Hashim and Faris who lost her kidneys
-

Collages



Fabrications





Self-Developed Visuals

- Paintings where I am a central figure instead of the fictional characters
 - I painted my “dreamy world”, “a no place”, “a nowhere” i.e. my *Utopia*
 - I made the paintings/illustrations that define me as a person as previously they defined the fictional characters
-



Protective Spoon-feeding Beyond Time

Spoon-feeding Beyond Time

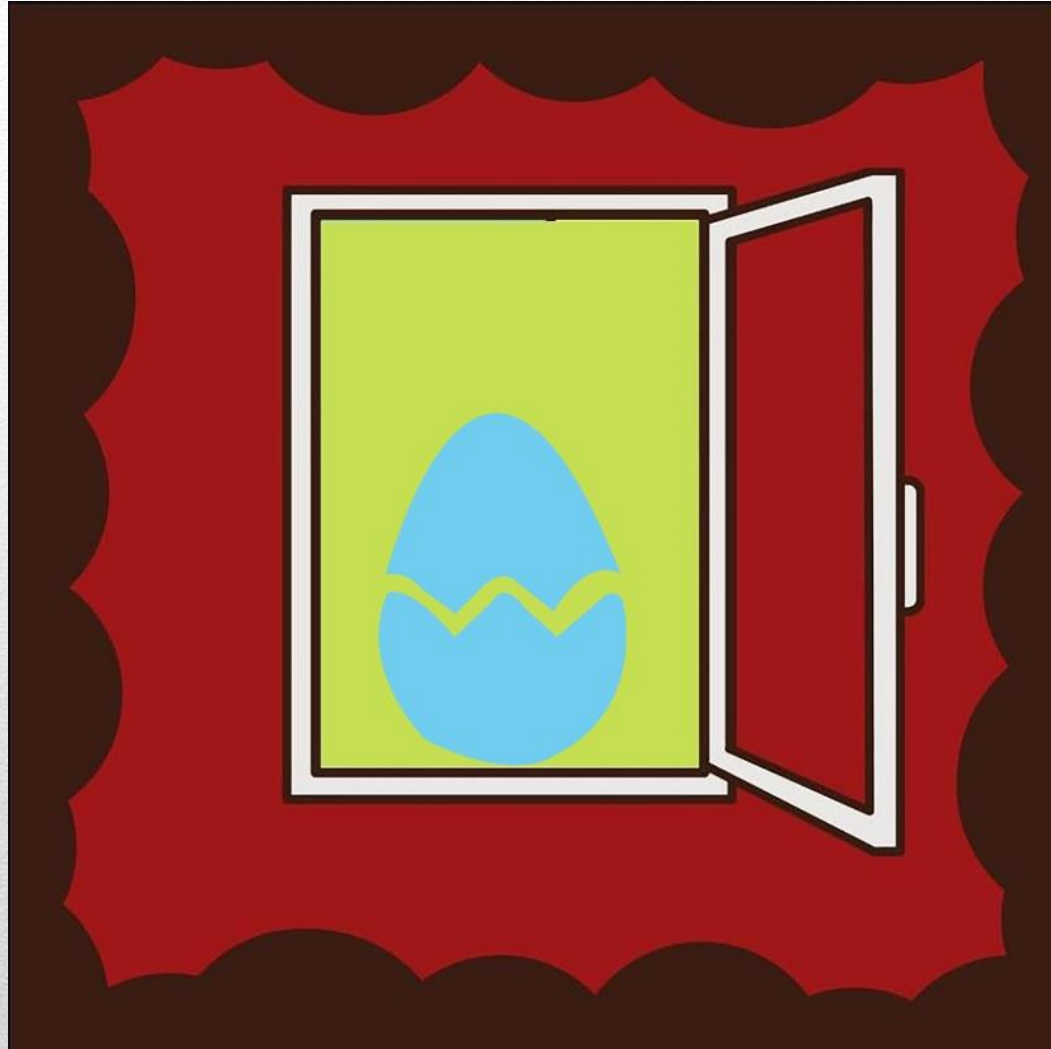
- This painting visualizes my life where I am still pampered
 - I am always spoon-fed, provided and helped
 - I dream of exploring myself of how I will react on being on my own
 - The hourglass symbolizes that time just in my imagination
 - The crack represents my confusion between right and wrong
-



Tangled Choices

Tangled Choices

- This painting visualizes my thoughts full of “What If”
 - Tangled choice is of my career which always keeps me confused
 - I dream of where my indecisiveness and confusion leads me to
 - The compass symbolizes direction and is painted on a helium balloon
 - The direction on the compass flying shows how I explored myself through my career choice
 - I feel like I am exploring a new world
-



Layers Of Protection

Layers Of Protection

- This painting visualizes my life where I am protected and loved
 - The window represents my parents who are barrier between darkness outside and me
 - Green color on the window metal represents Patina which means a metal is old but is also sometimes thought that it helps to protect against the more destructive red rust
 - I always saw my parents like that, old, strong but protecting me
 - The crack in the eggshell is my sensitivity and overthinking
 - I have a comfortable life and anything that bothers me is my own overthinking
-



Entering A New Magic Room!

Entering A New Magic Room!

- This painting visualizes my explosive nature
 - I think of entering a new world, a *Utopia*
 - Road symbolizes the path
 - Dark brown plants represent my fear that the road entering Utopia maybe haunted
-

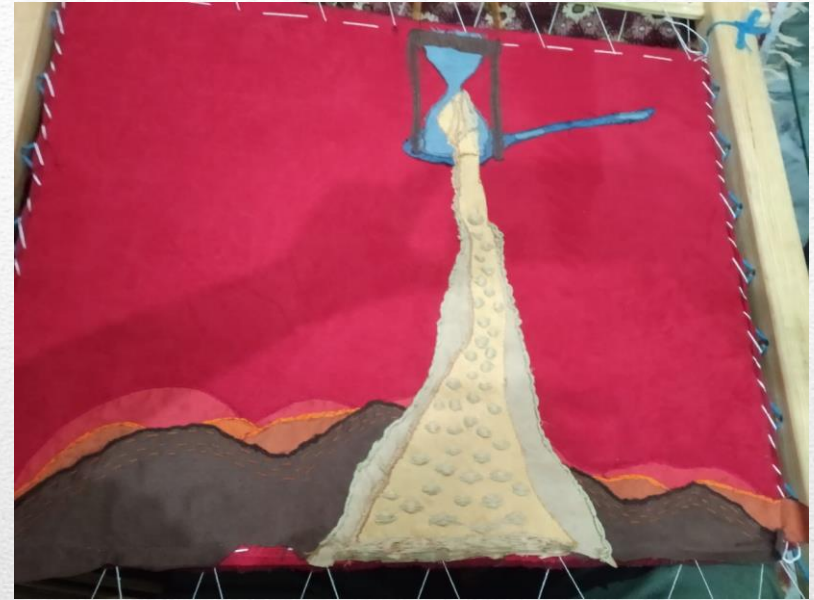
Fabrications



For fabrications

- ❖ Used threads of different qualities and materials
- ❖ Wool
- ❖ Anchor
- ❖ Silk yarn
- ❖ Tilla
- ❖ Fish wire
- ❖ Adding textures and richness to the fabrications





Techniques

- ❖ Applique
- ❖ Hand embroidery
- ❖ 3D hand embroidery
(creating layers by adding thermocol)

Materials

- ❖ Thermocol
- ❖ Wool of different thickness
- ❖ Anchor
- ❖ Fish wire
- ❖ Suede





Size

Length :- 24 inches

Width :- 19.5 inches

Techniques

- ❖ Applique popped up
- ❖ Hand embroidery
- ❖ Couching

Materials

- ❖ Tilla
- ❖ Fish wire
- ❖ Wool of different thickness
- ❖ Anchor
- ❖ Leatherite
- ❖ Suede







Techniques

- ❖ Chain stitches in round direction
- ❖ Running stitch
- ❖ Couching
- ❖ Experimental Stitches



Size
Length :- 38.5 inches
Width :- 26 inches





Techniques

- ❖ Applique popped up
- ❖ Hand embroidery
- ❖ Machine Embroidery

Materials

- ❖ Fish wire
- ❖ Wool of different thicknesses
- ❖ Anchor
- ❖ Organza for layering
- ❖ Suede



Size

Length :- 26 inches

Width :- 38.5 inches

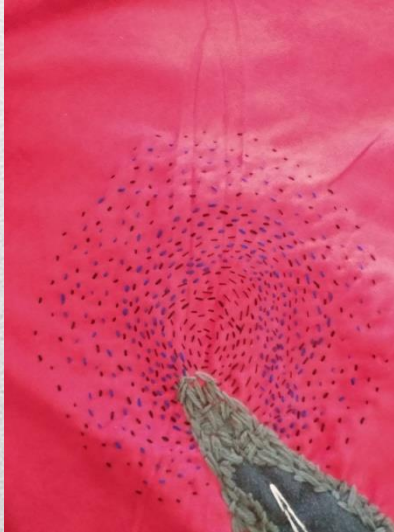
Techniques

- ❖ Applique
- ❖ Hand embroidery
- ❖ Machine Embroidery

Materials

- ❖ Silk Yarn
- ❖ Felt
- ❖ Fish wire
- ❖ Wool of different thickness
- ❖ Anchor
- ❖ Jute
- ❖ Suede



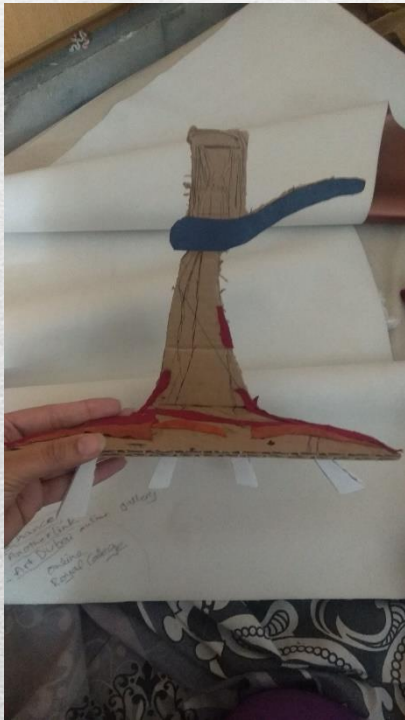




Size
Length :- 38.5 inches
Width :- 26 inches



Furniture Prototypes















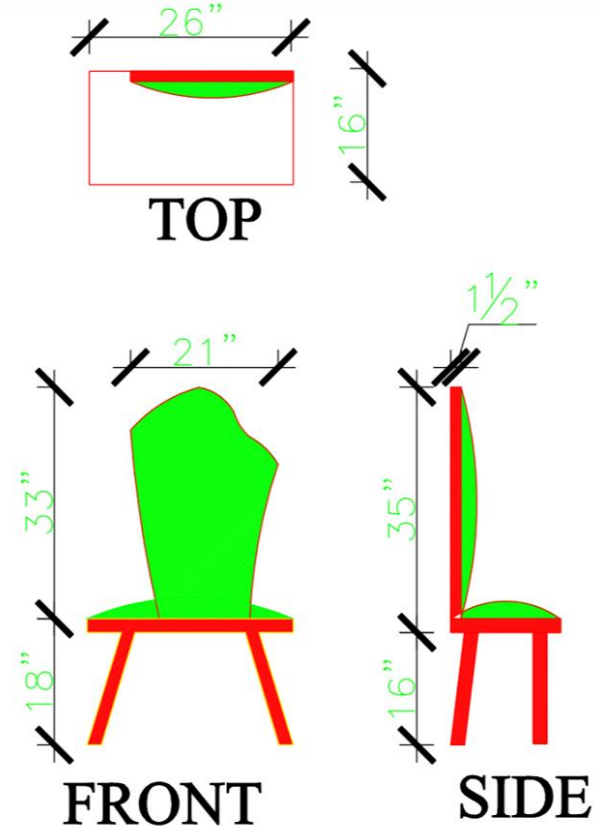
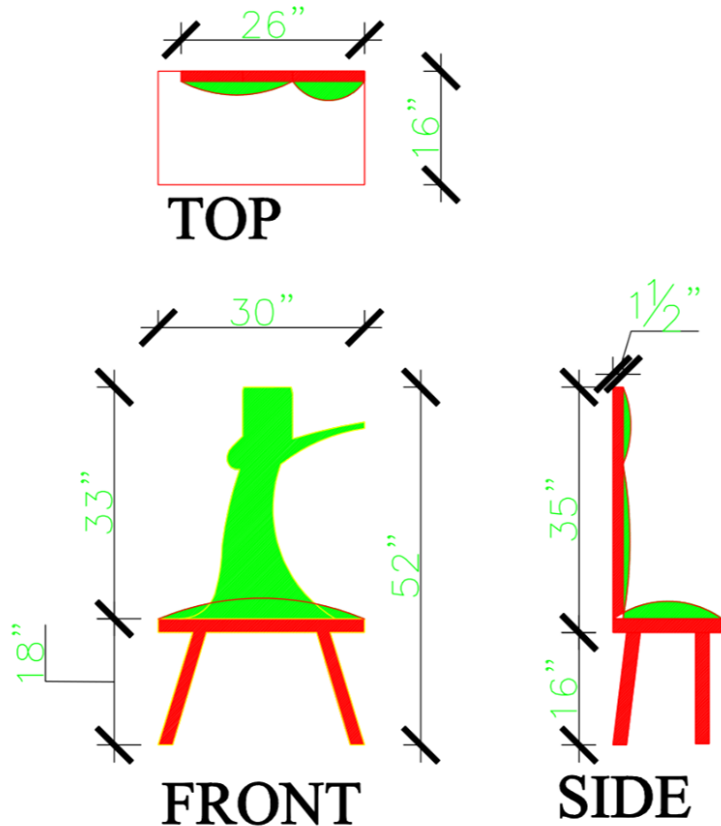


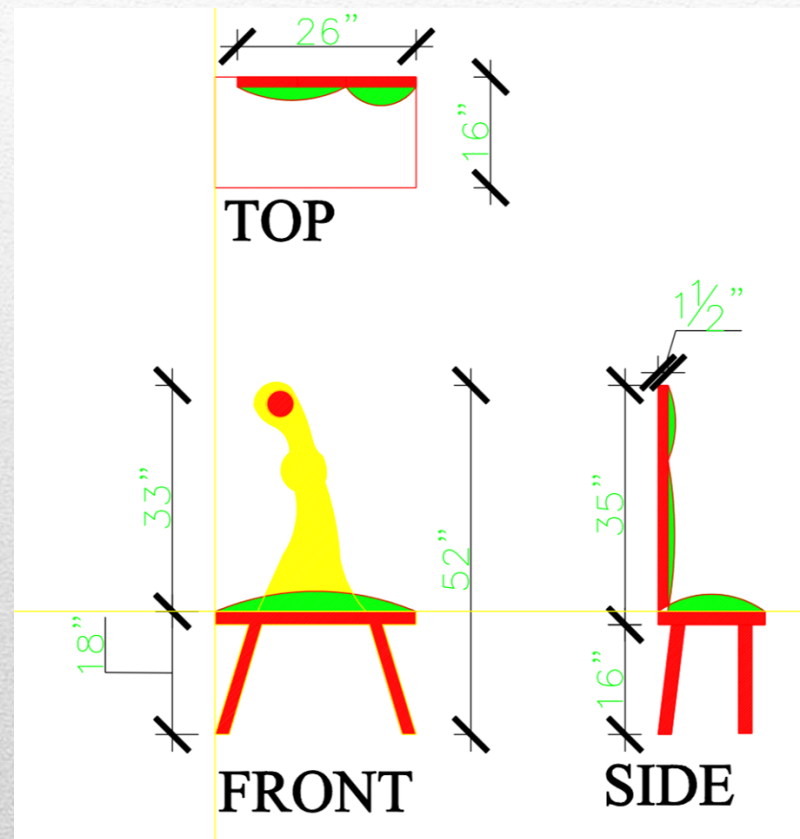
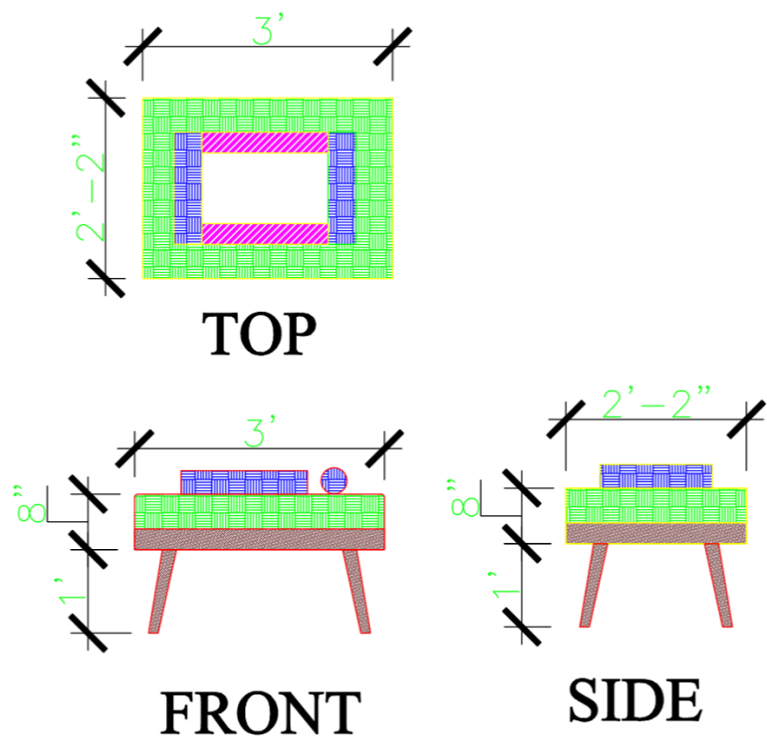






Technical Drawings/ Illustrations





Embroidery for the furniture









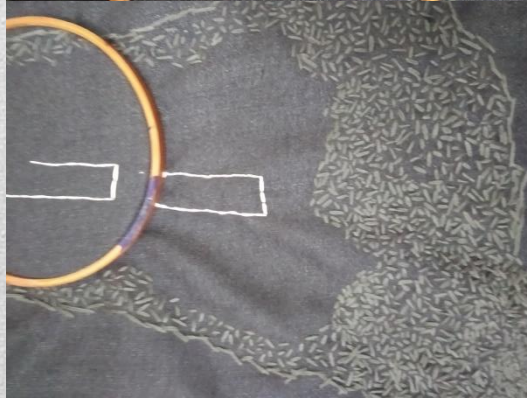


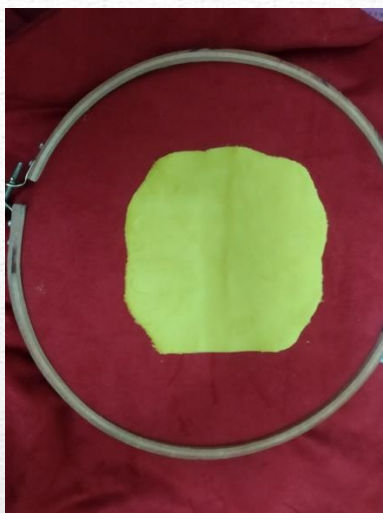








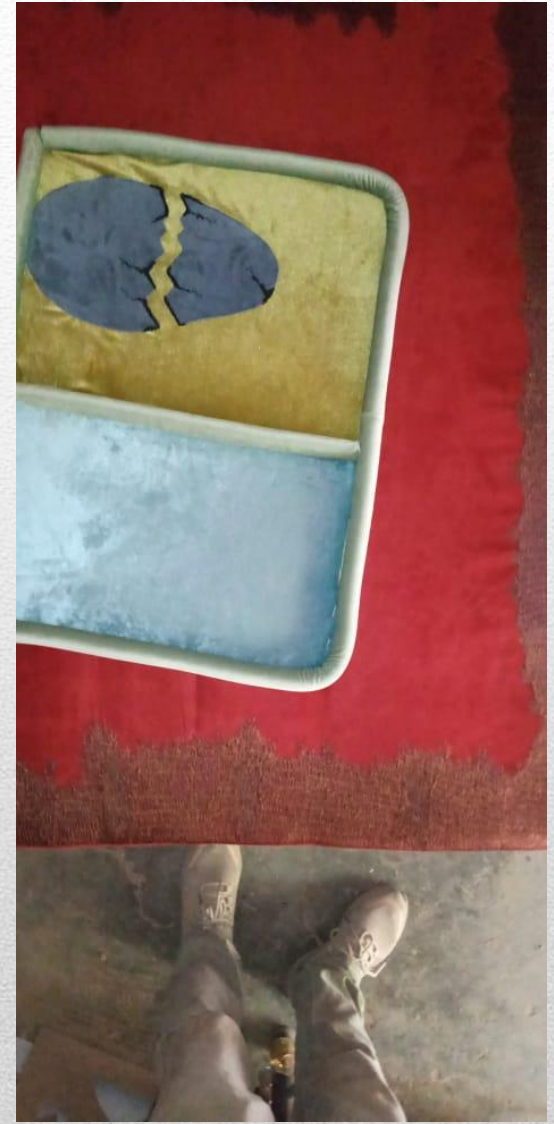






Building Furniture



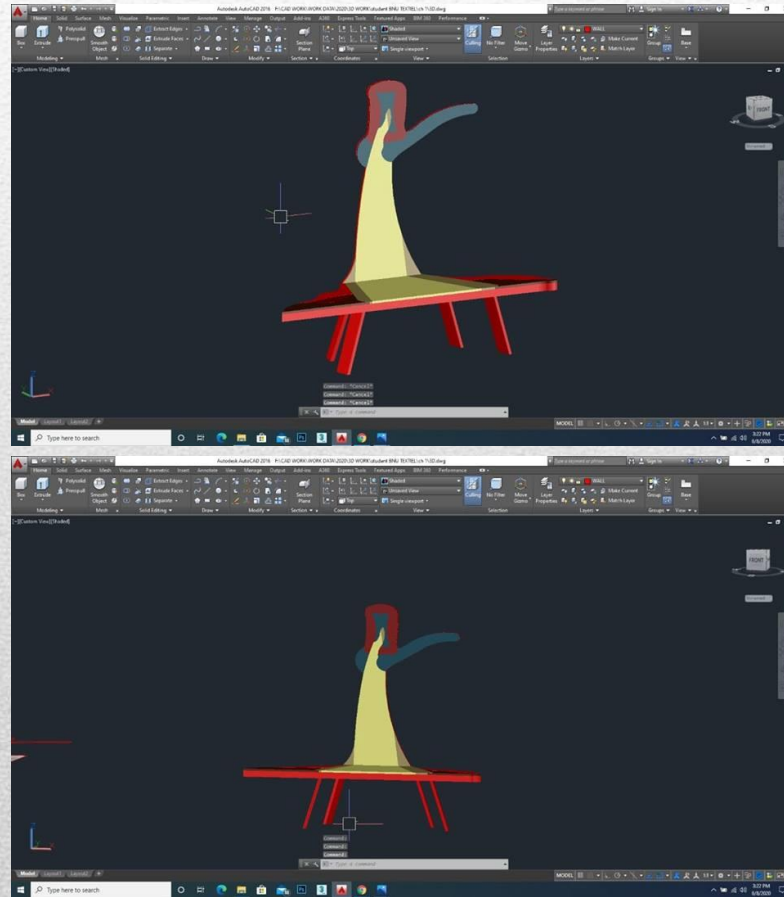


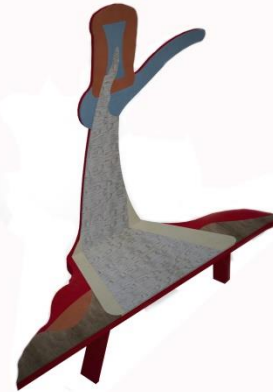
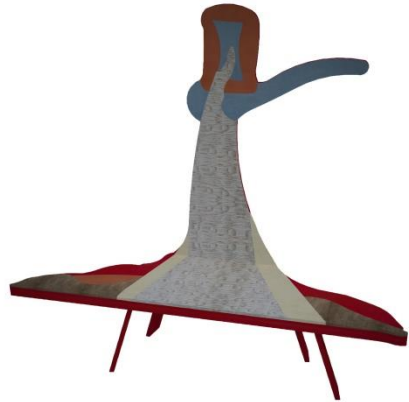


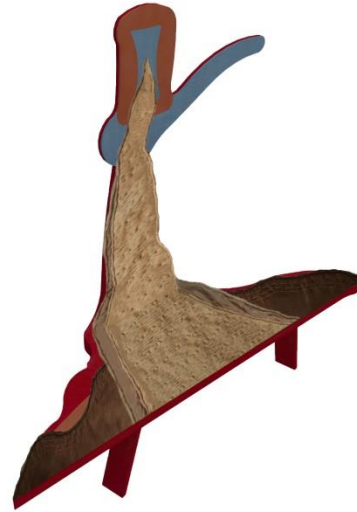


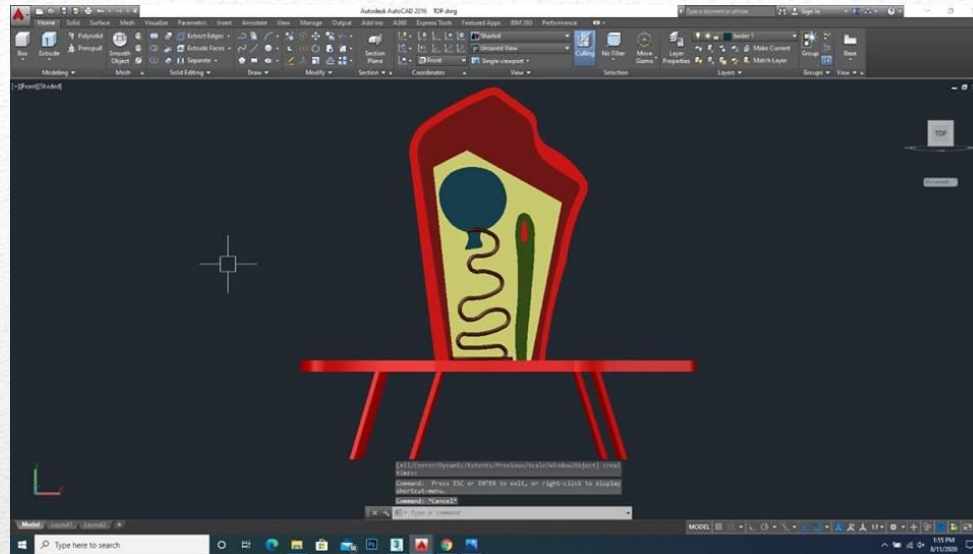


3D Max Models Mapping





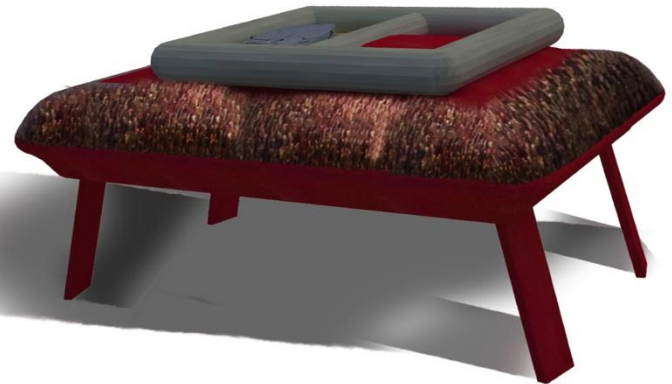
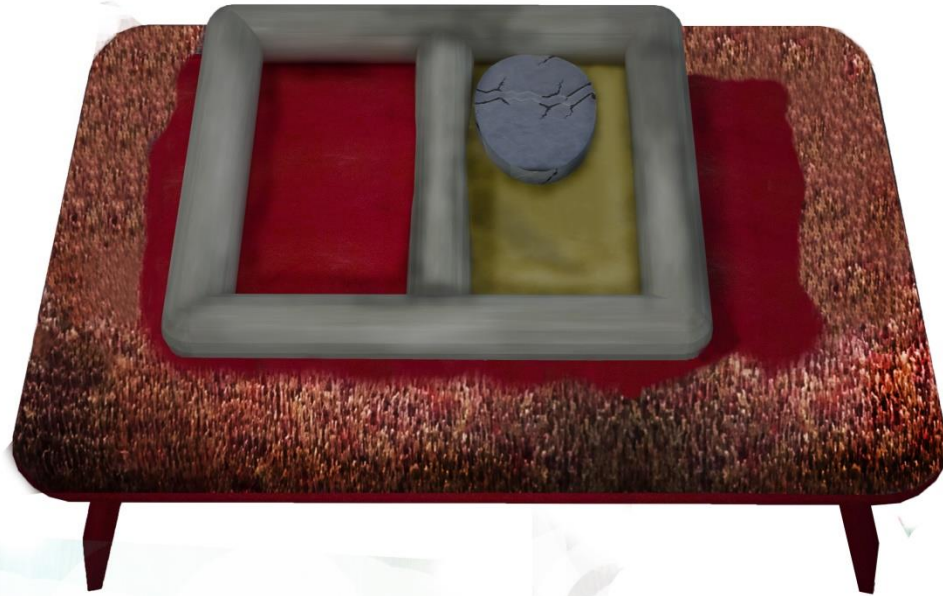


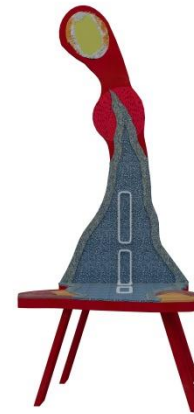














Furniture And Paintings Display Ideas







