

Threads of Edurement

THESIS PORTFOLIO

01

TEXTILE DESIGN - 2020

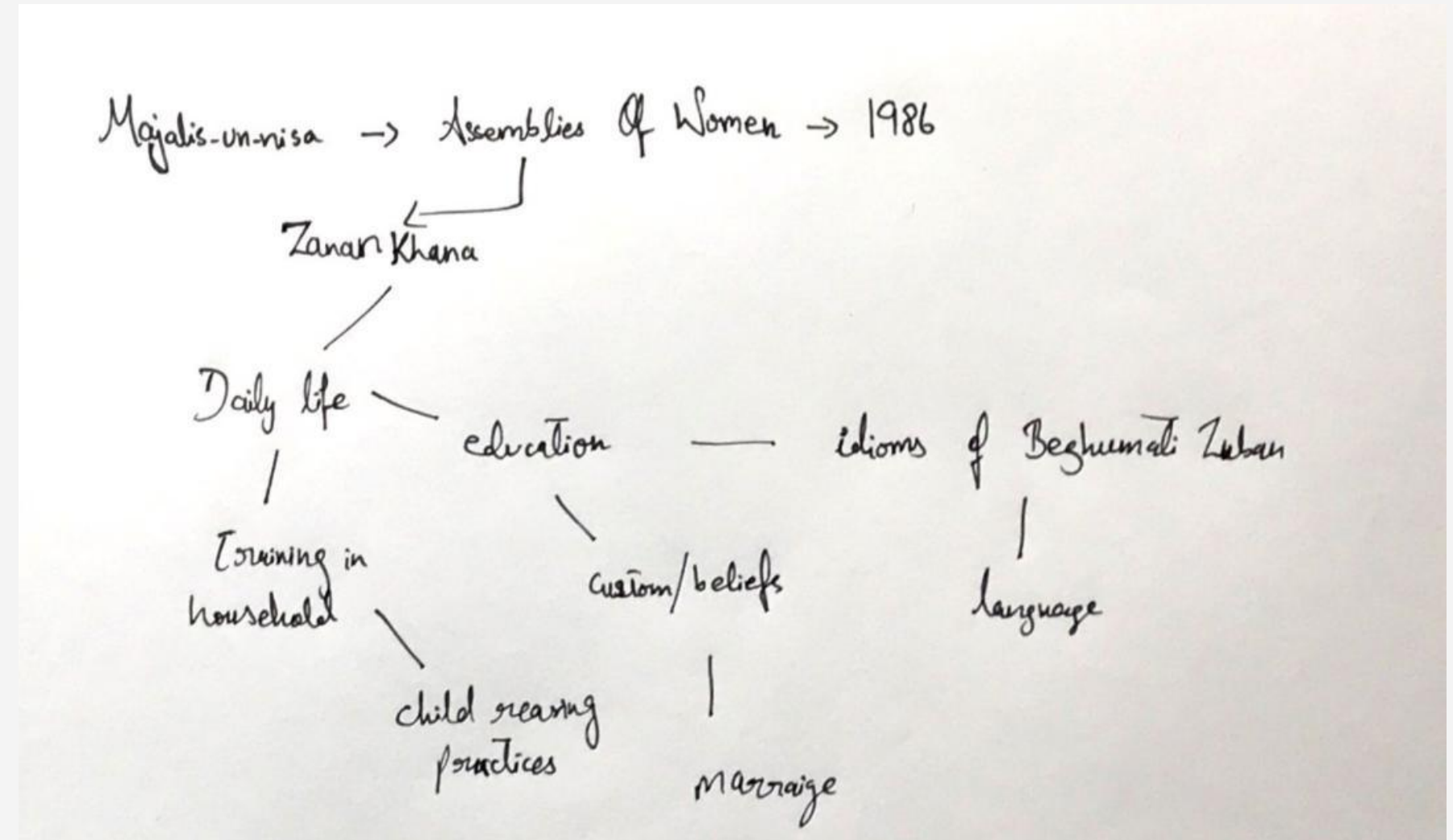


While
working on embroidery and the different
styles and materials used to create
such a fine mode of design I began to
question as to when and how it all began,
its purpose and in its entirety I found
myself in doldrums of questions that
ranged from society pressures, design,
creativity and expression. The more I
sought answers the more I realized how
just mere threads have defined the
society and the culture associated in time.

Literature Review

03

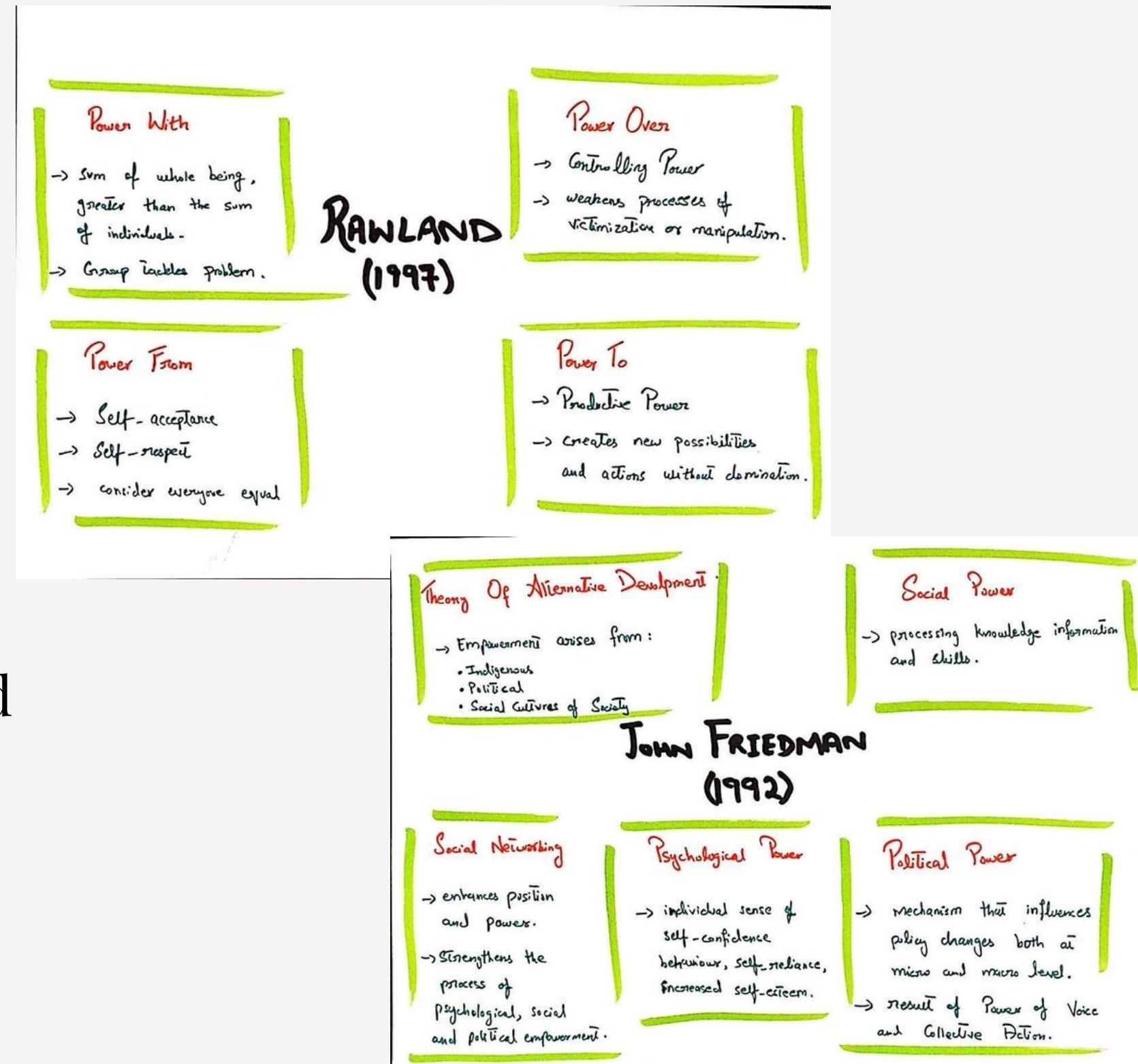
I've gone through some urdu literature by Altaf Hussain Hali who wrote **Majalis un-Nisa (Assemblies of Women) 1986**. The literature includes long narrative passages describing women's daily life, their education and training in household management, child-rearing practices, customs and beliefs. Women should be educated because they are real managers of the household, the focus of family life, responsible for the early training of the children.



Research

04

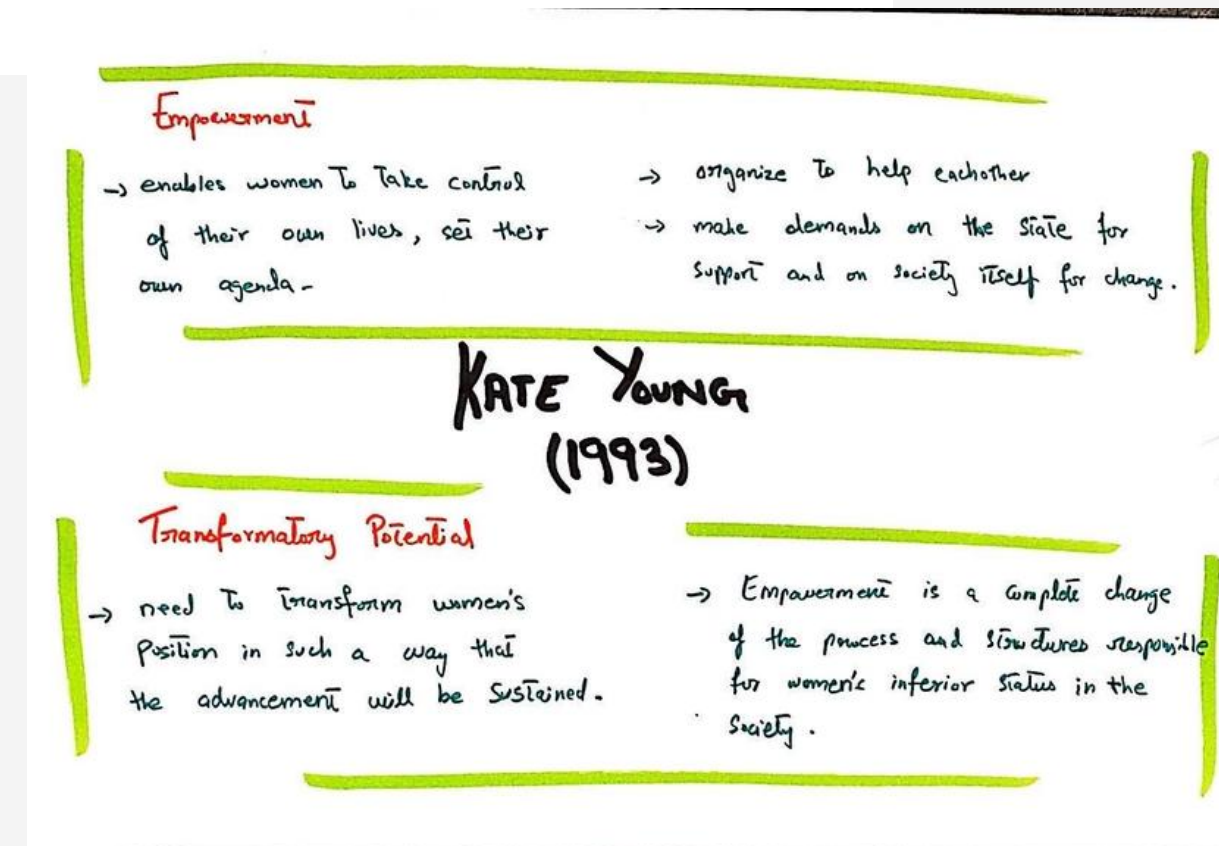
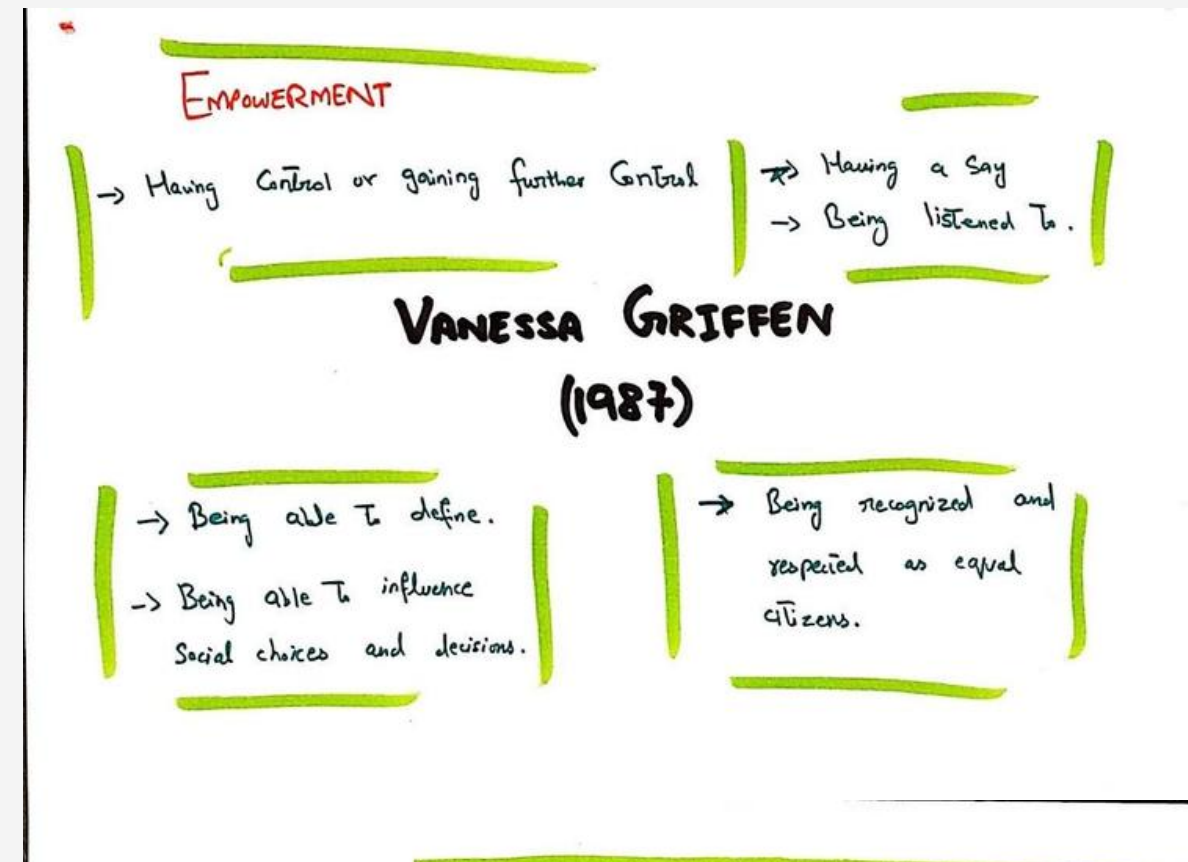
Whereas, women in contemporary time also being subsidized by the society. Now women are questioning, they want to gain control over their lives but few have clear conception on empowerment. I studied the concept of empowerment written by MD Aminur Rahman.



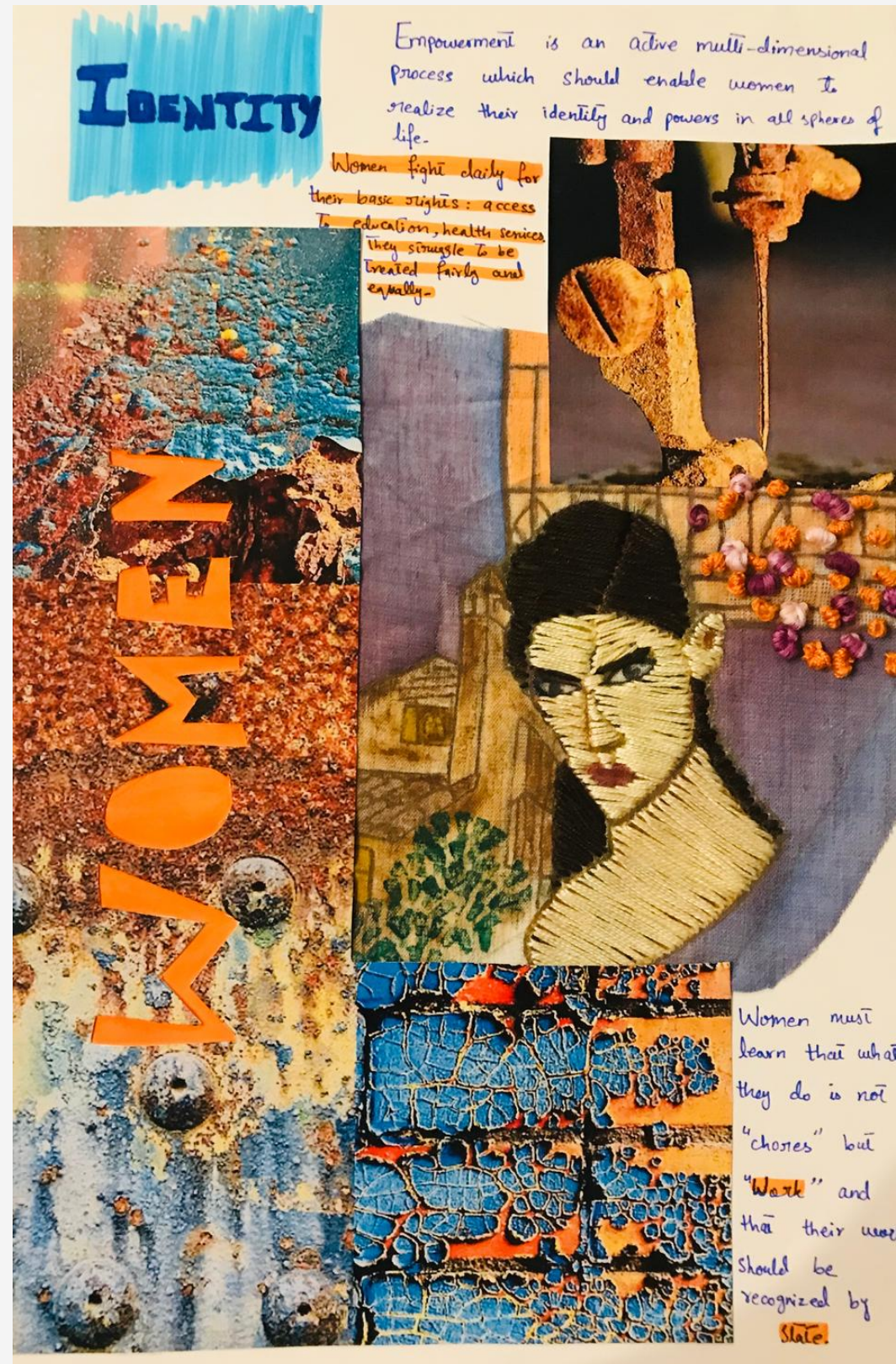
Research

05

Different scholars have different analysis on empowerment. It enables women to take control of their lives, set their own agenda. Women can make demands on the state for support and on society itself for change.



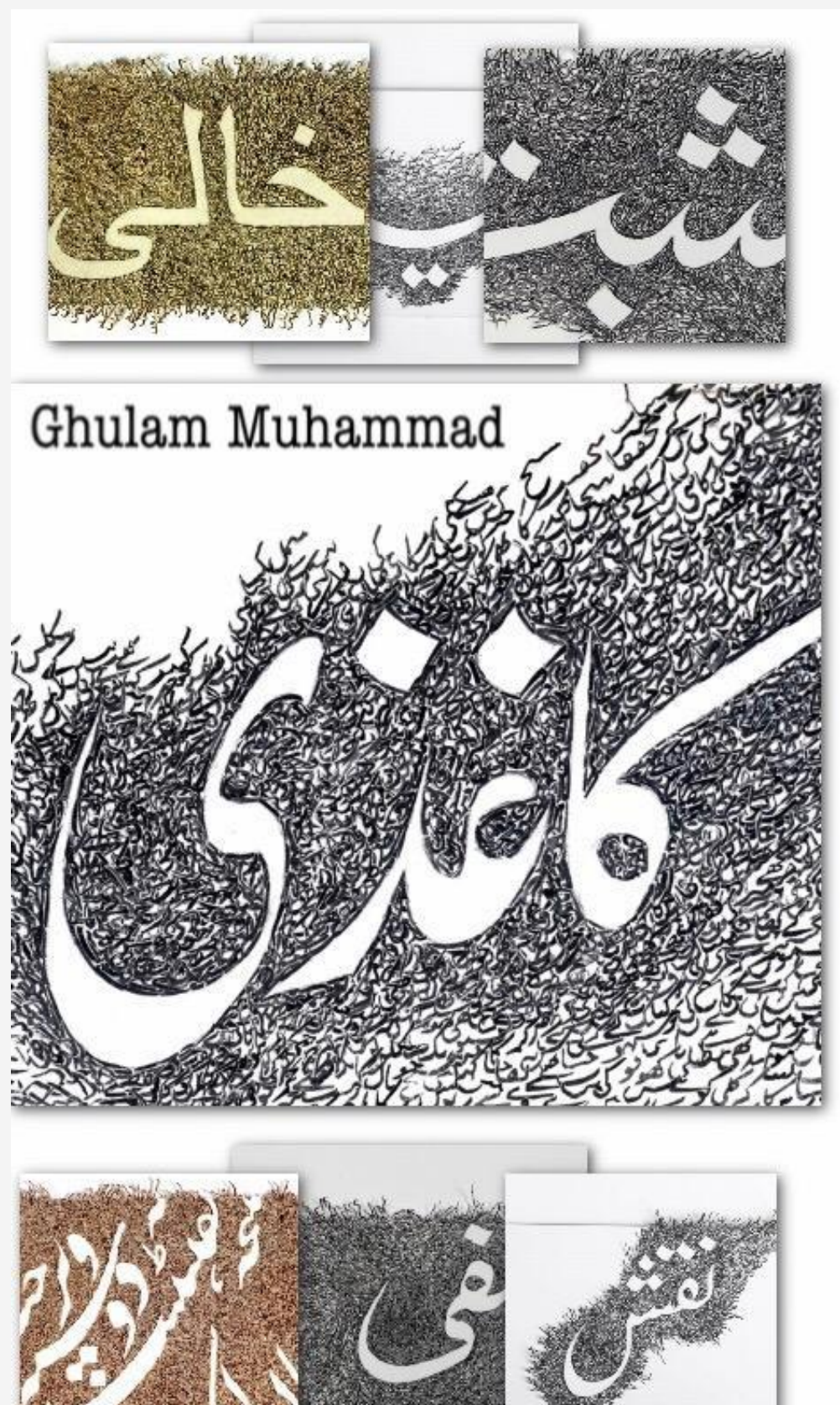
01



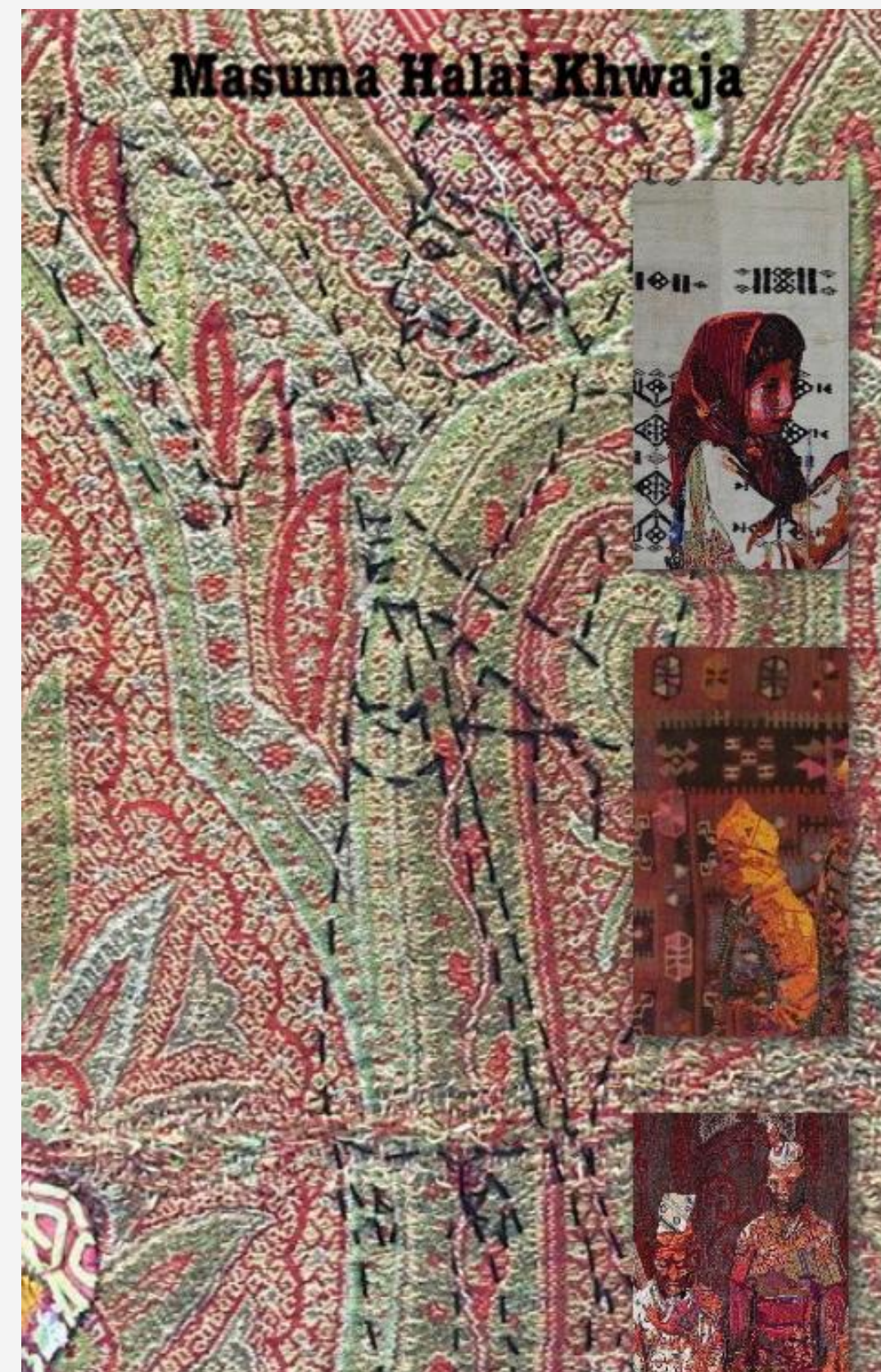
02



03



04



05

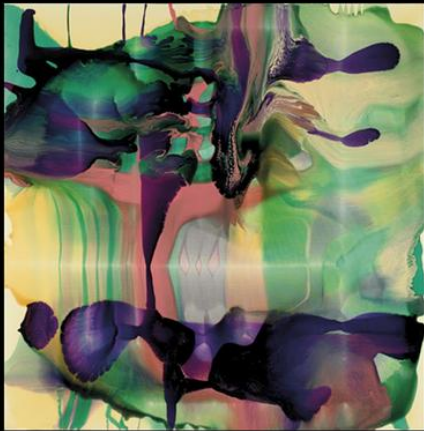
ARTIST: DALE FRANK



Her best feature was her thick pubic hair up and over her stomach which she kept to become a natural microclimate and aphrodisiac

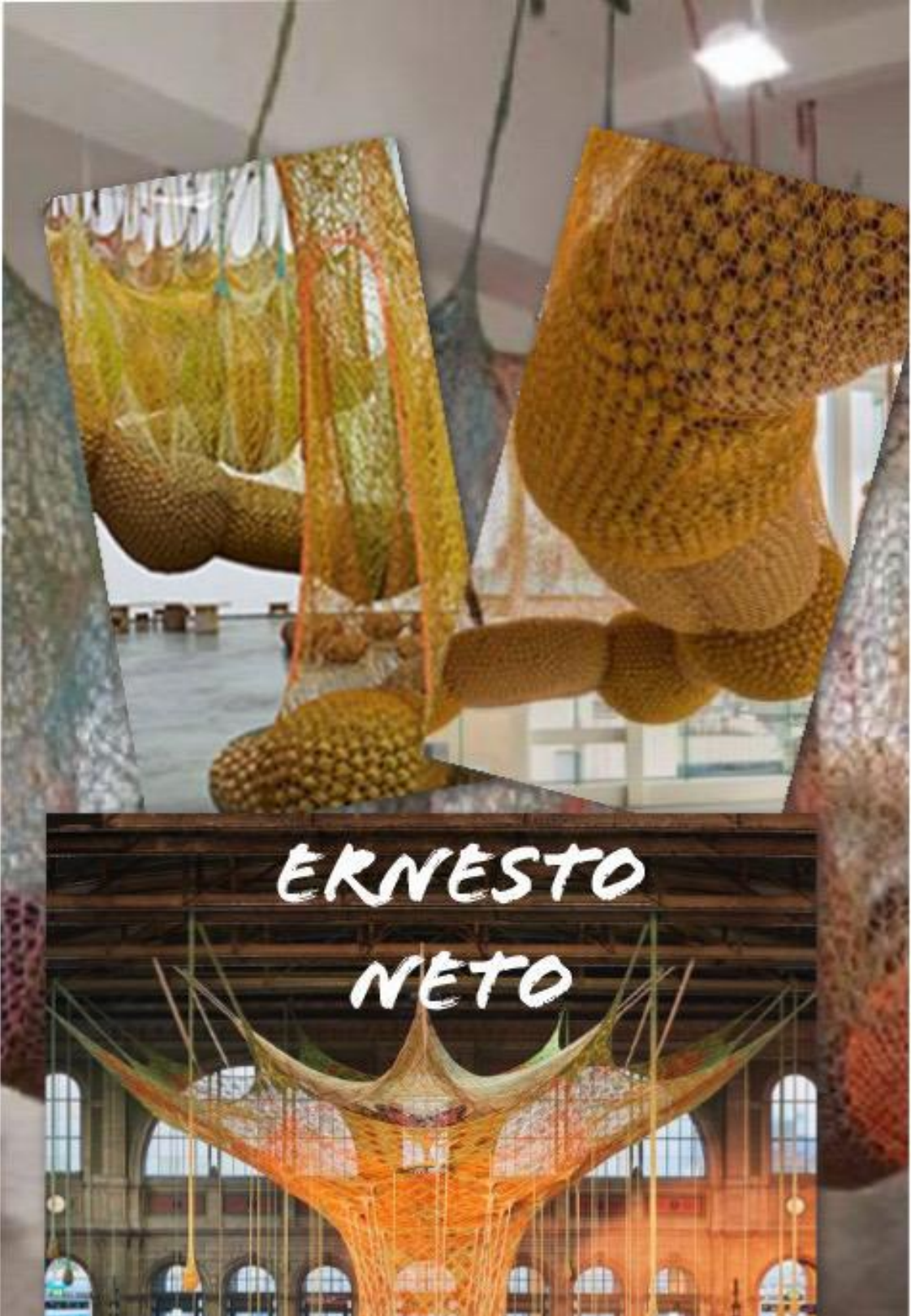


A ONE POINT TWO FIVE LITRE BOTTLE

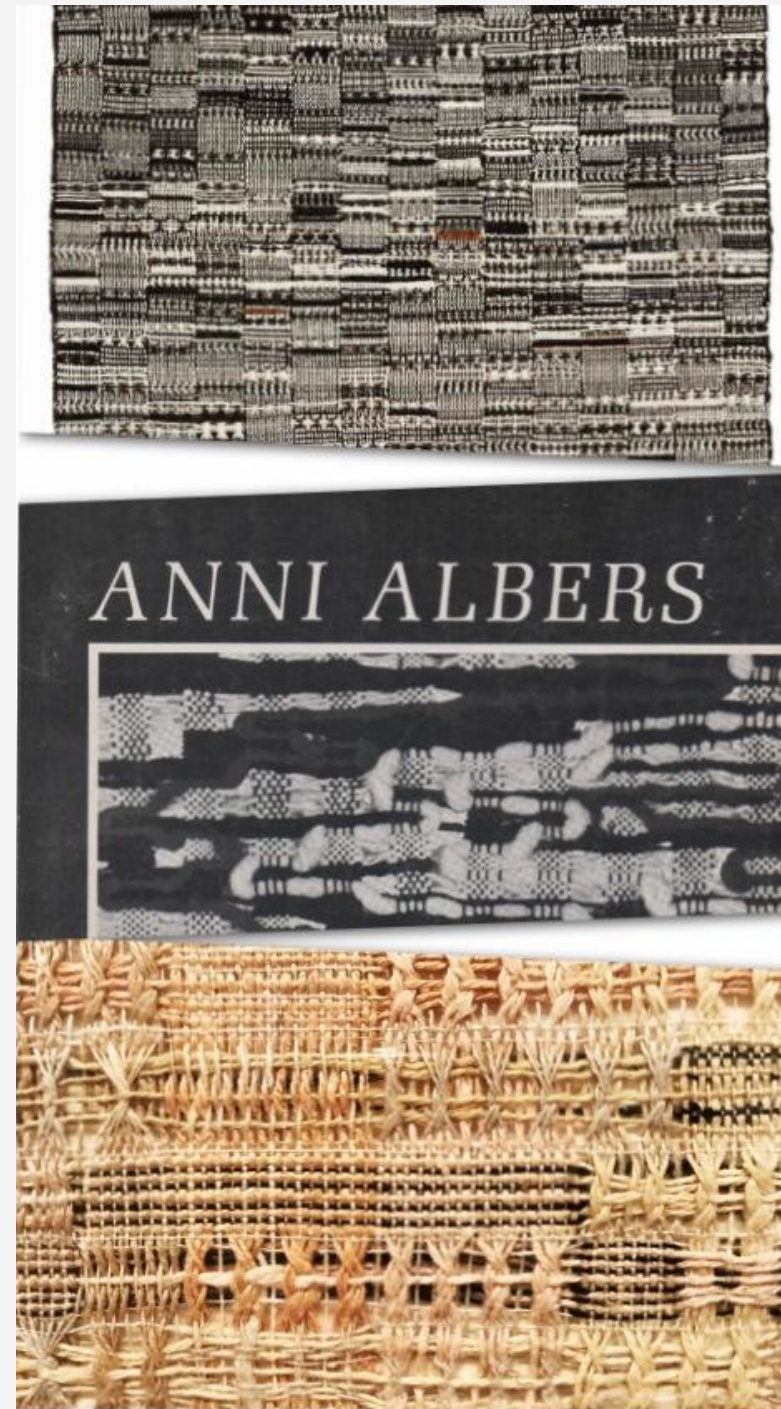


WHEN ASKED HOW HE ACQUIRED HIS FINE COLLECTION OF FRENCH EMPIRE CLOCKS

06



07



08



Fabrications



weavings



01

11

This piece is made with copper wires and thread. It has the ability to **mould**.



02

This piece is made with colorful threads which were 1 inch in size. This gives a lot of curly textures in a weave. A weave that gives a feeling of **joy and happiness.**



03

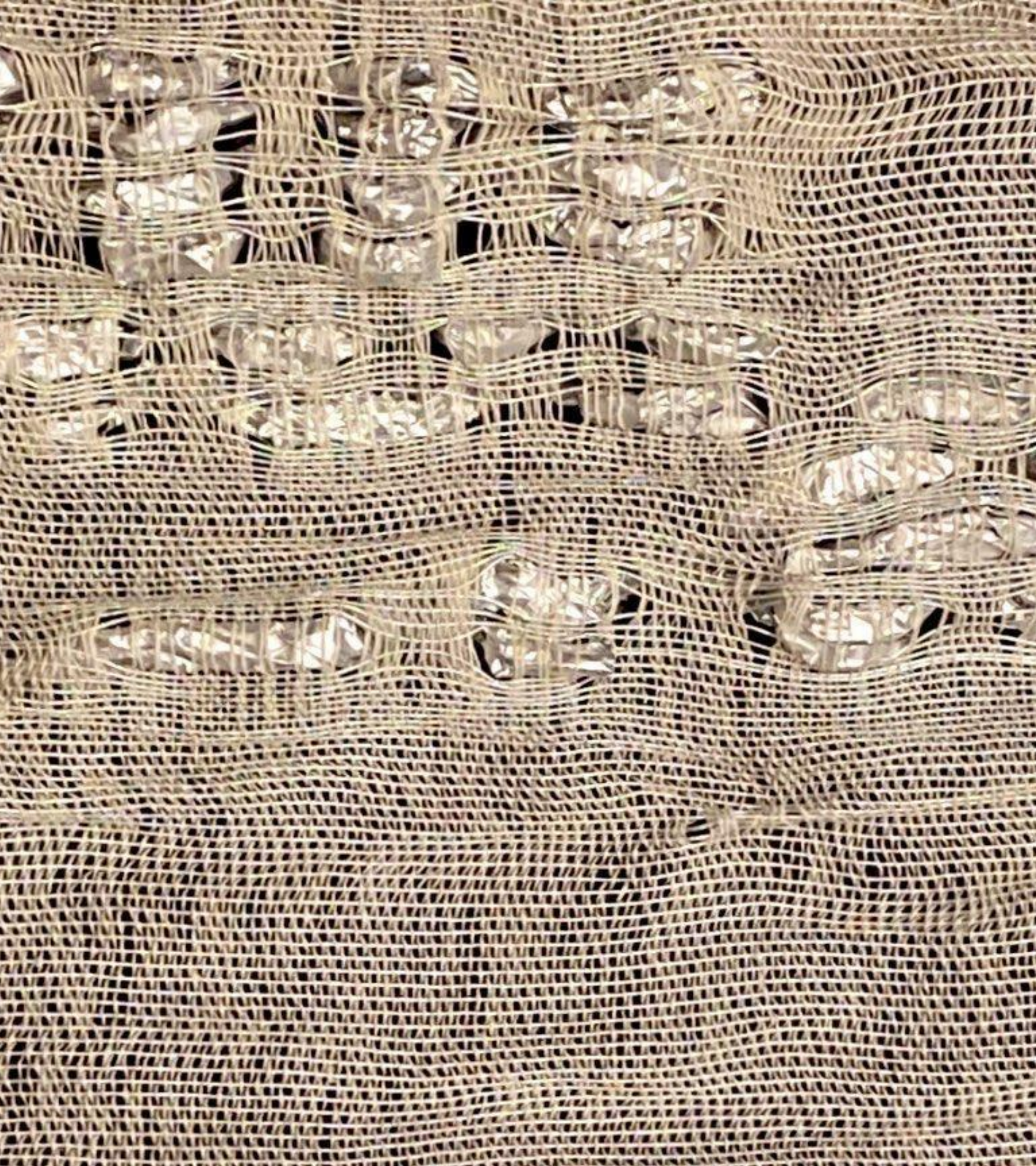
13

This piece is made with ropes
and wool. A weave that shows
strength.



04

This piece is made with tilla. This is very thin and sheer weave. A weave that shows **sensitivity, delicacy.**



05

This piece is made with elastic and foil papers. A weave that shows **flexibility**.



06

16

This piece is made with net and wool. A weave that shows **endurance.**



07

17

This is a **narrative** based weave
with embroidered tilla.



08

This piece is made with metal scraps, copper wires and thread. It can be mould. A weave that shows **obstacles and hardships.**



09

This piece consist of metal scraps
and mesh.This shows
oppression.

Fabrications



embroideries

01

Hand Embroidery pieces that includes colors and different types of stitches. Inspired by natural textures.





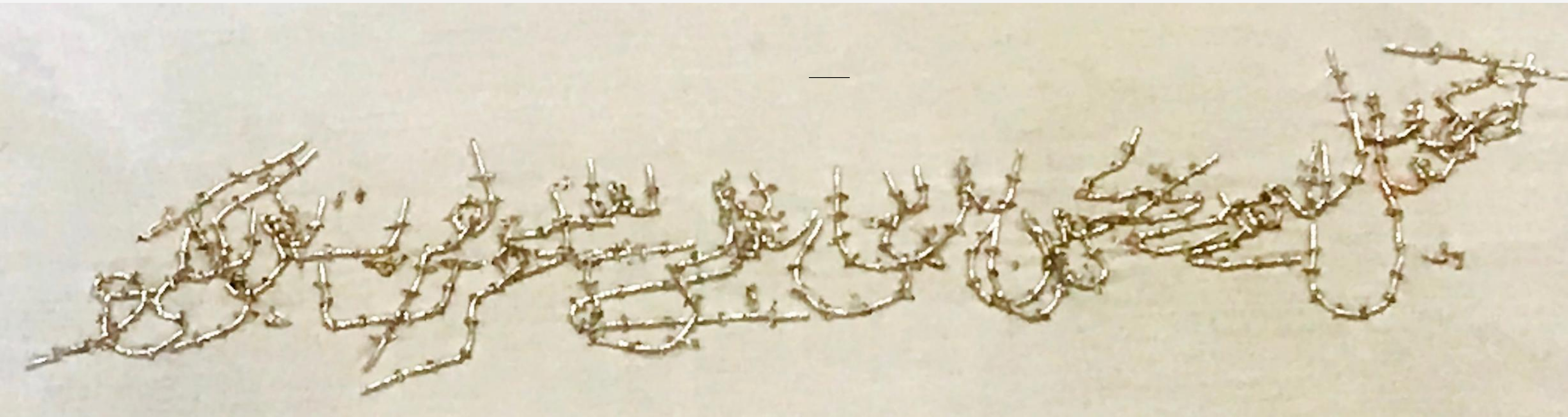
02

Machine Embroidery and Applique fabrication, this represent a pregnant woman living in a chaos and hurdles.

Hand Embroidery text from majalis un nisa, It is overlapped many times so that it can't be read. These embroidery text shows unsaid feelings of a woman.

23

03



04

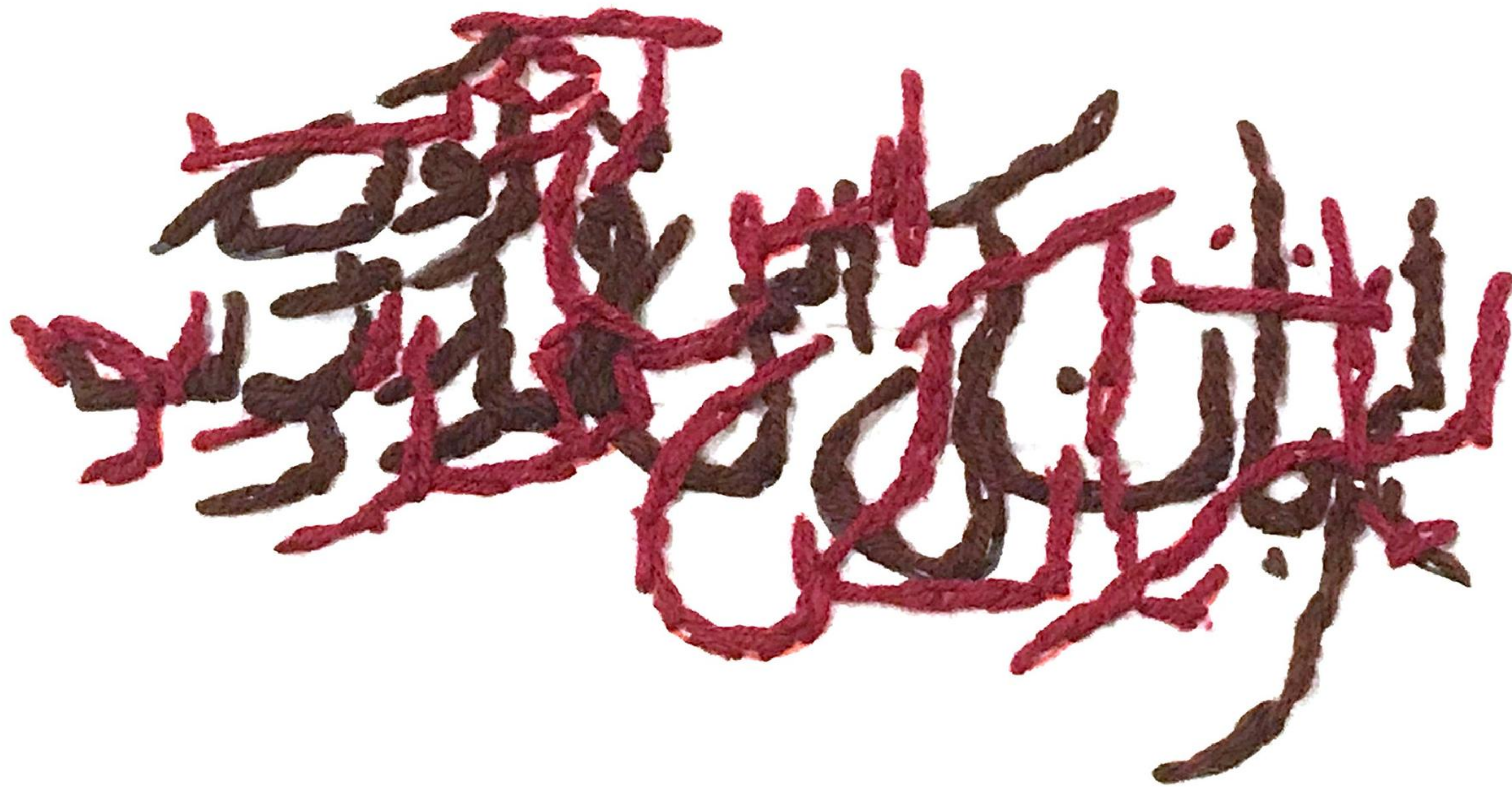




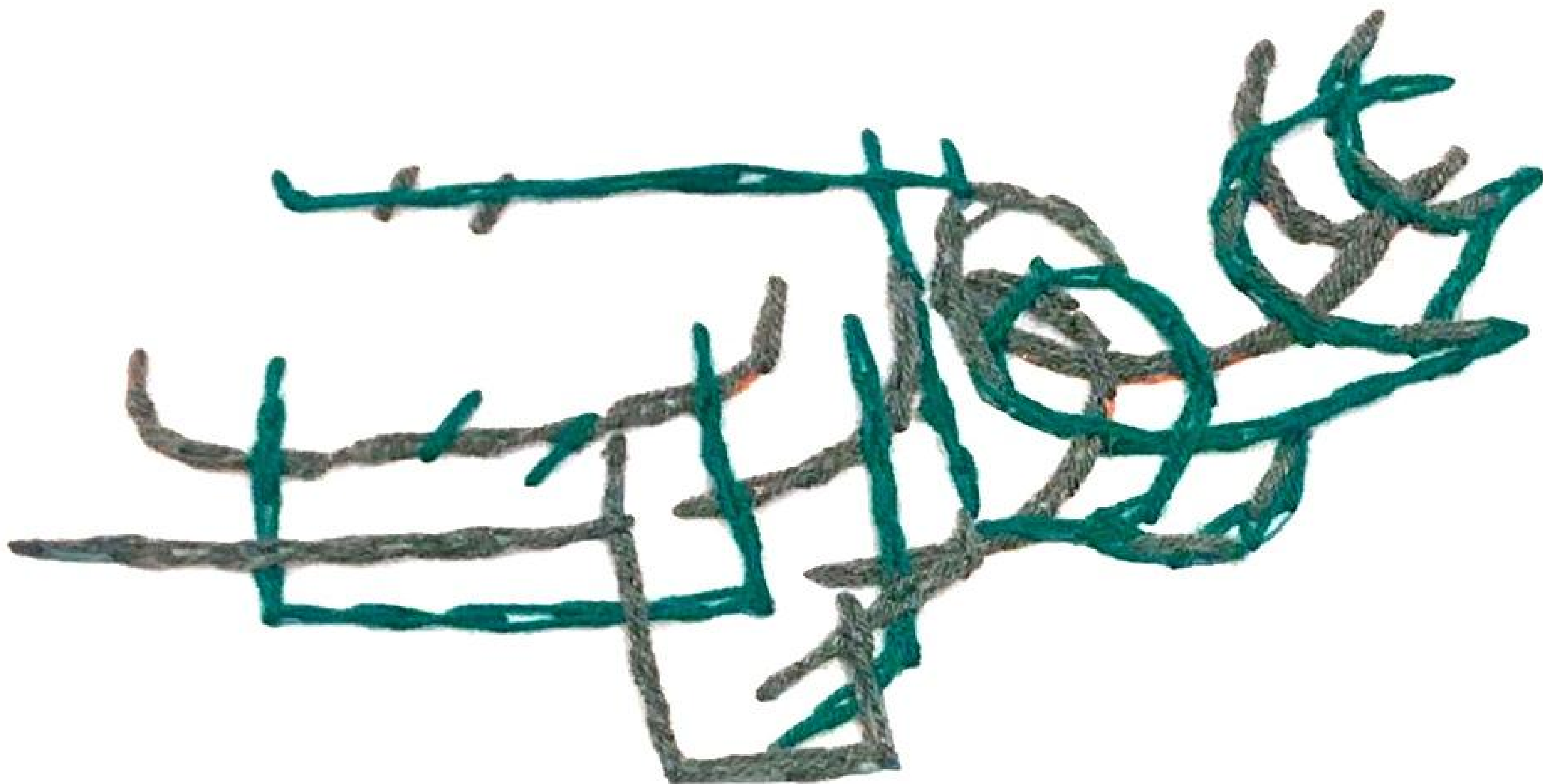
05

25

06



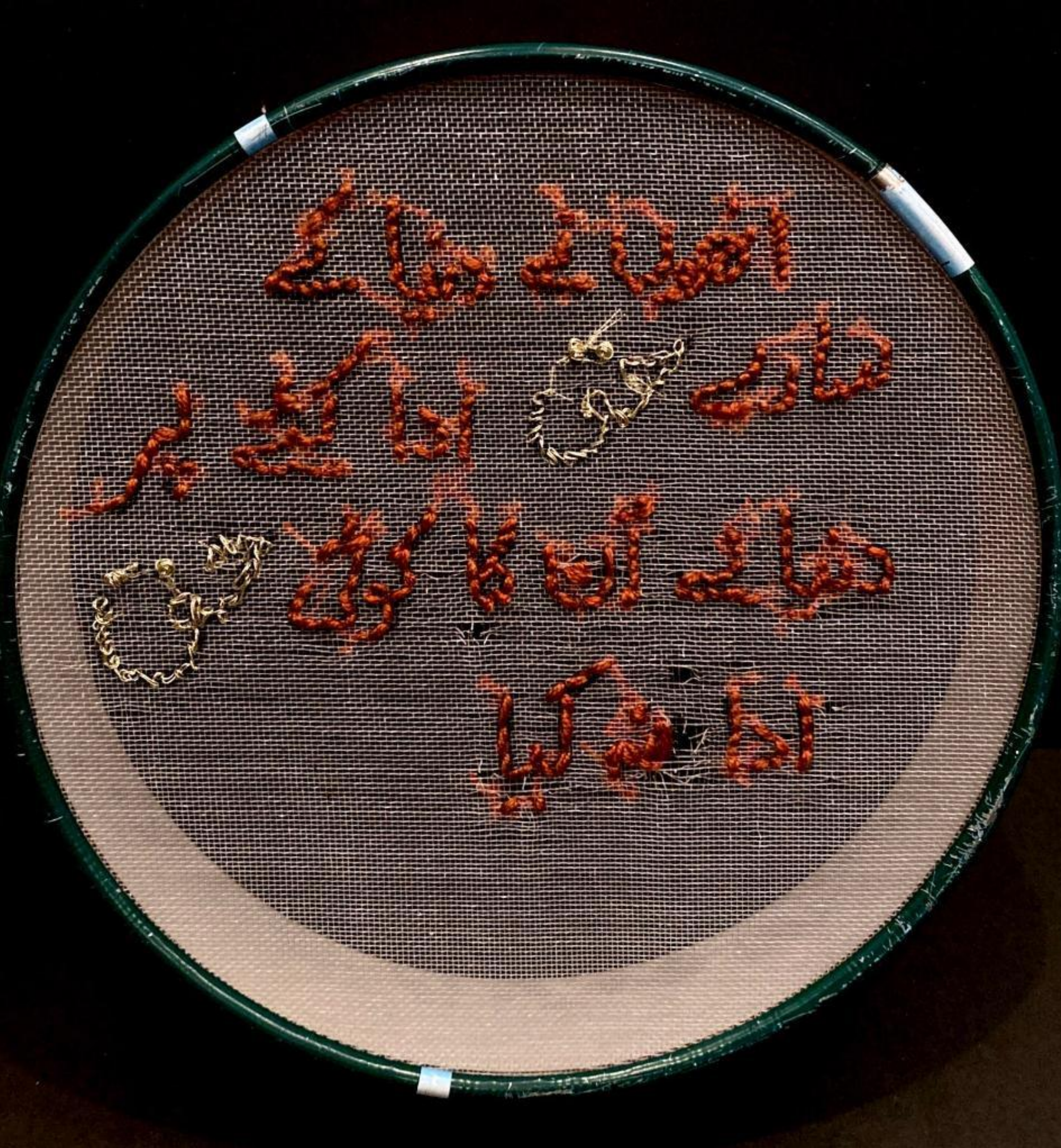
07



Products

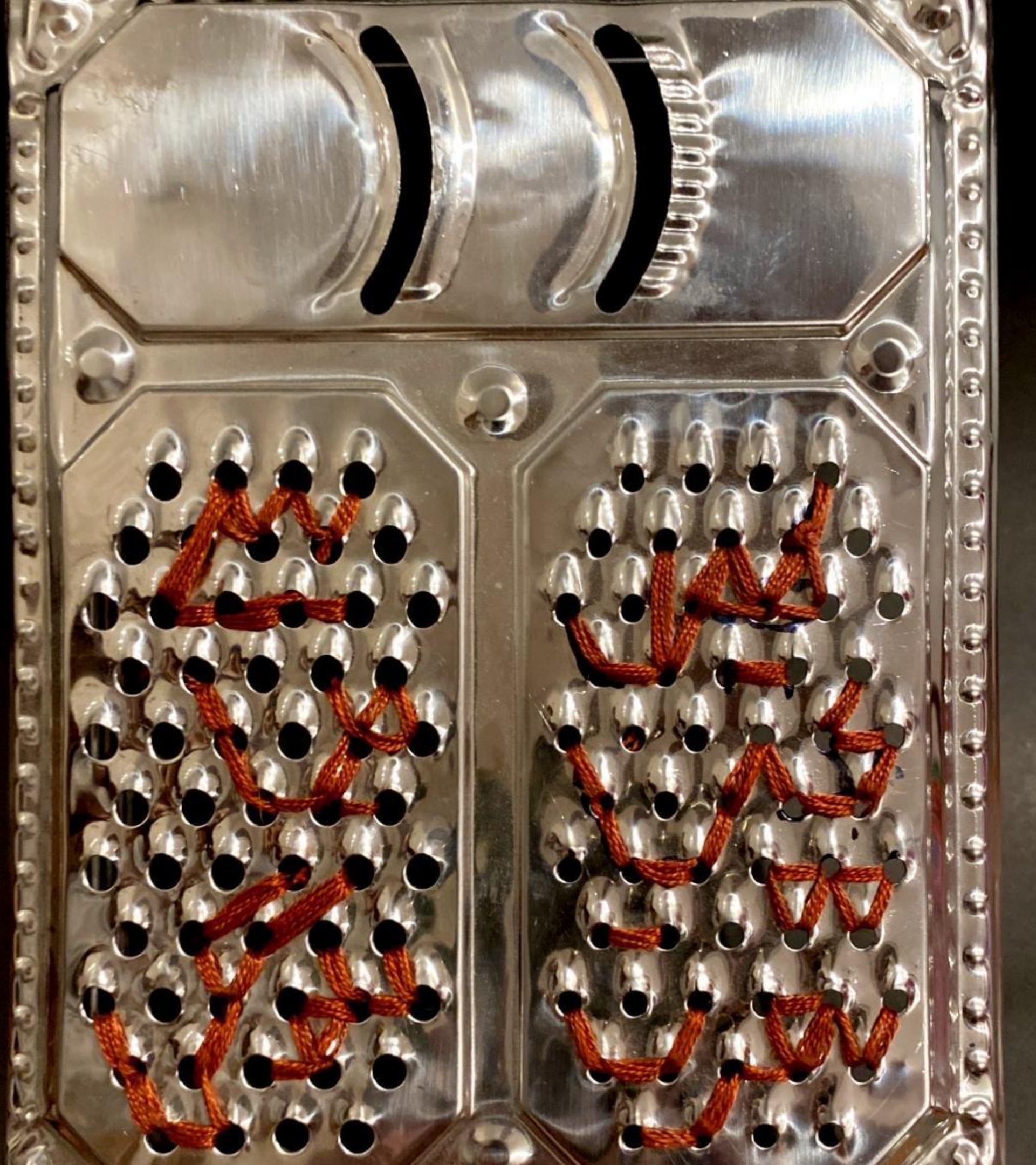


domestic



01

Hand Embroidery on Sieve



02

30

Hand Embroidery on Chopper

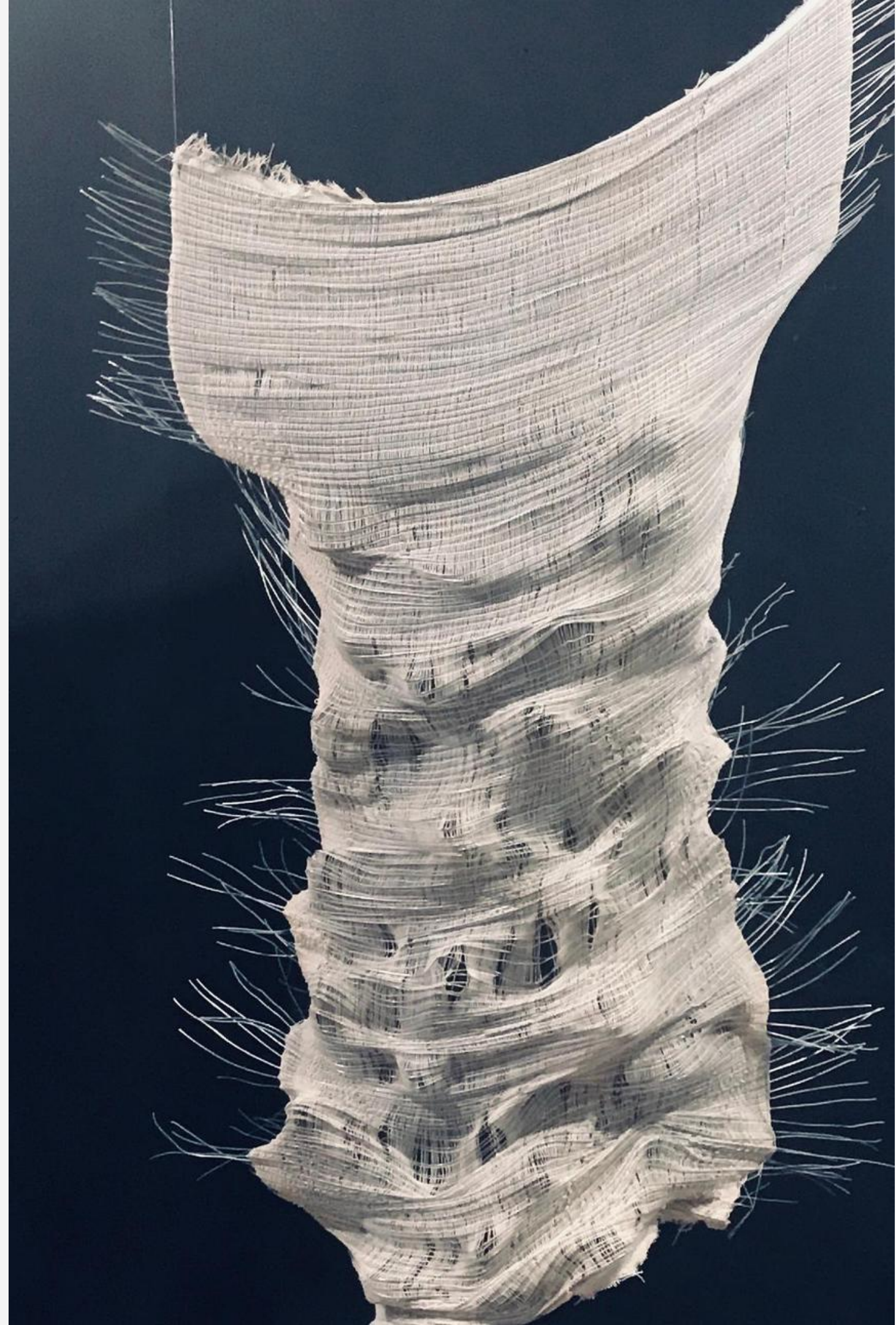
" My Work revolves around the status of a women in our society. How society want a women to mould herself according to them and throughout the life she is pressurized by the society as a symbol of a weakness. The ability of a woman to successfully endure oppression to gain strength makes her strong "

Mini Thesis



This weaved panel is made of
copper wires.

This weaved panel is made of
silver wires.



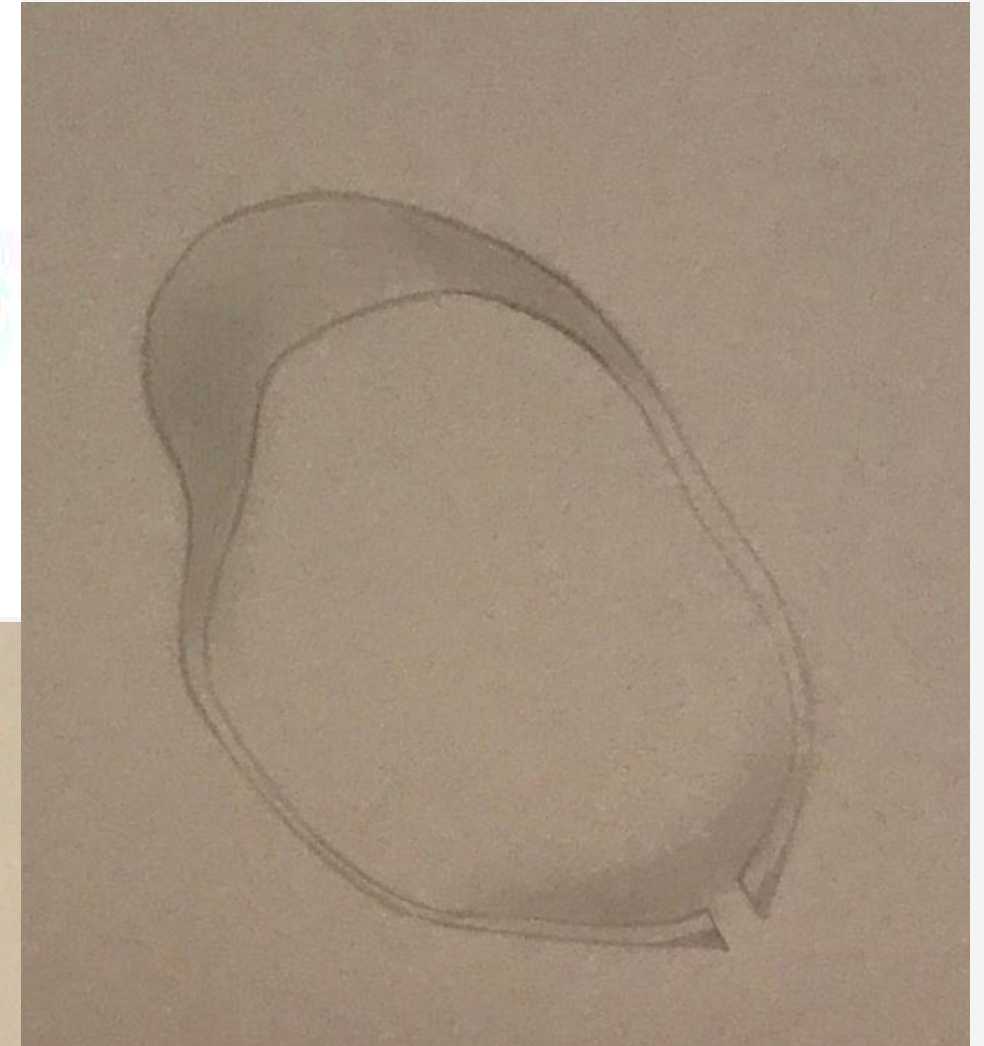
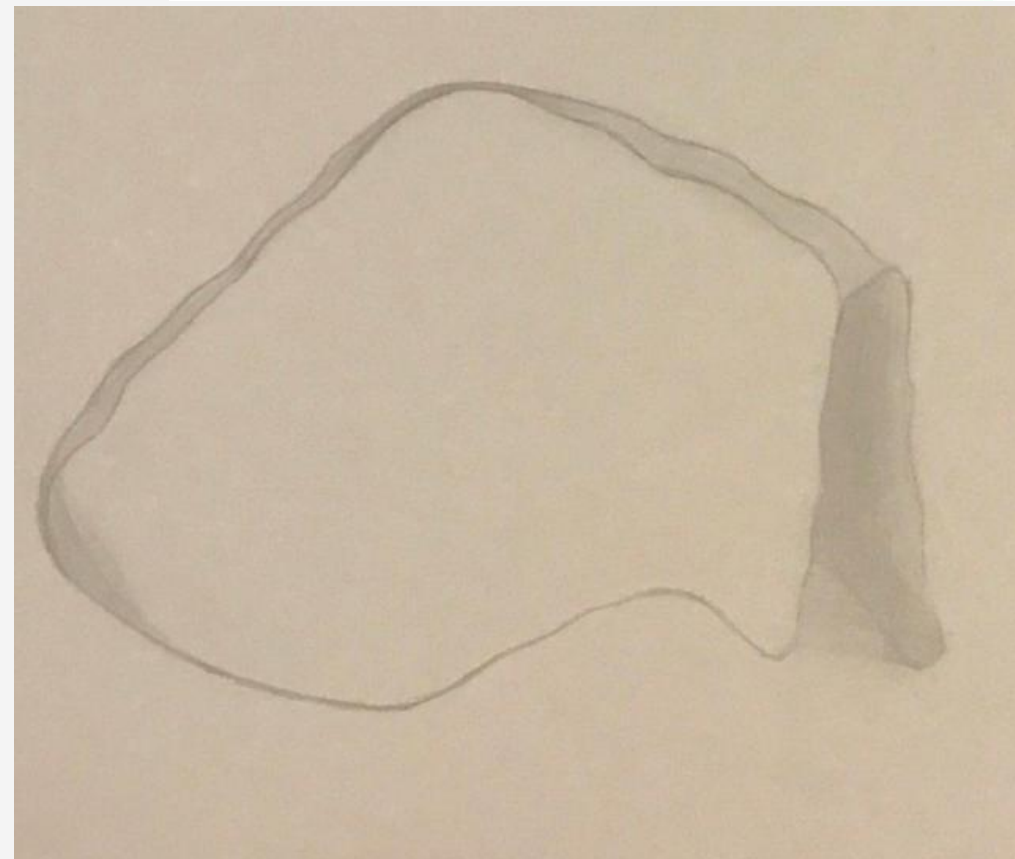
" I take woman as a strong part of a society who builds it, she is the one who carries a human body in her womb, what else can be stronger than a woman? My idea is to make an installation for the viewer to touch, see and smell the fragrance of a woman. "

INSTALLATION STRUCTURE

36



My idea is to make a womb installation
that asks the
viewer to slow-down, walk gently and feel
the depth and contribution of this
gender. "





WARP

37

" **21 kgs of thread cones** are used to make a **warp**, it is then dyed in 2 rustic tones"

MATERIAL

" I've used materials that define hardships and obstacles of a woman. **Metal scraps** are used because it cuts the fibers with its sharpness, **Copper Wires** are used because it have the ability to mould, it is a flexible material "

38



WEAVERS

39



01



02



03

This project is conducted in Dipalpur, Pakistan. There is a small community of rural weavers in a village. This project is really close to my heart where I got to see the **Pit-loom weaving** and the weavers. For generations, these weavers have woven khes. **Khes** is symbolically infused with life.



ON SCALE PROTOTYPE

41





ON SCALE PROTOTYPE

43



Panel Embroidery



Hand Embroidery on panels,
Technique which is used to
embroider is **Couching**. Mix of
Maroon and Green with Gold
Tilla represent delicacy of
embroidery.

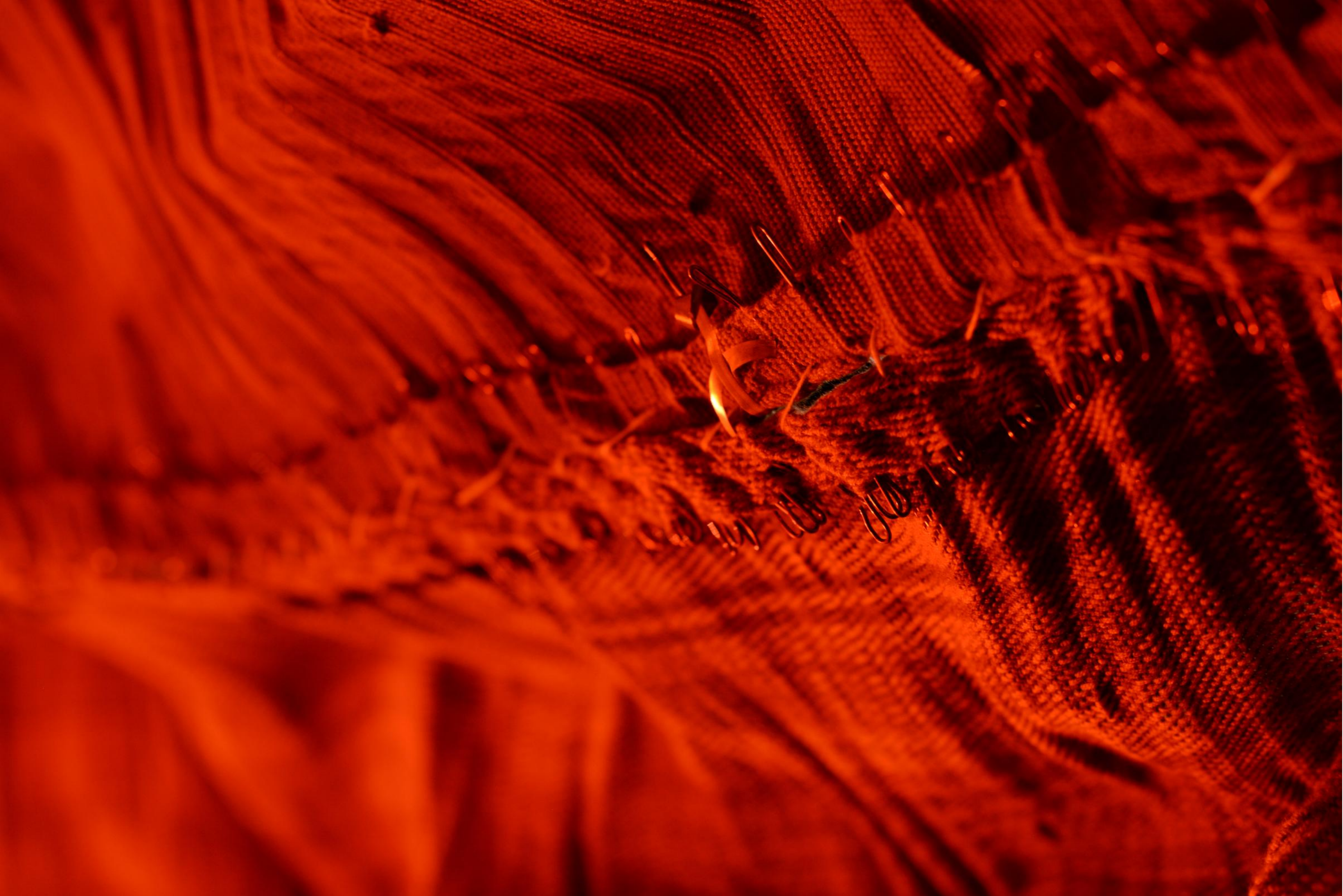






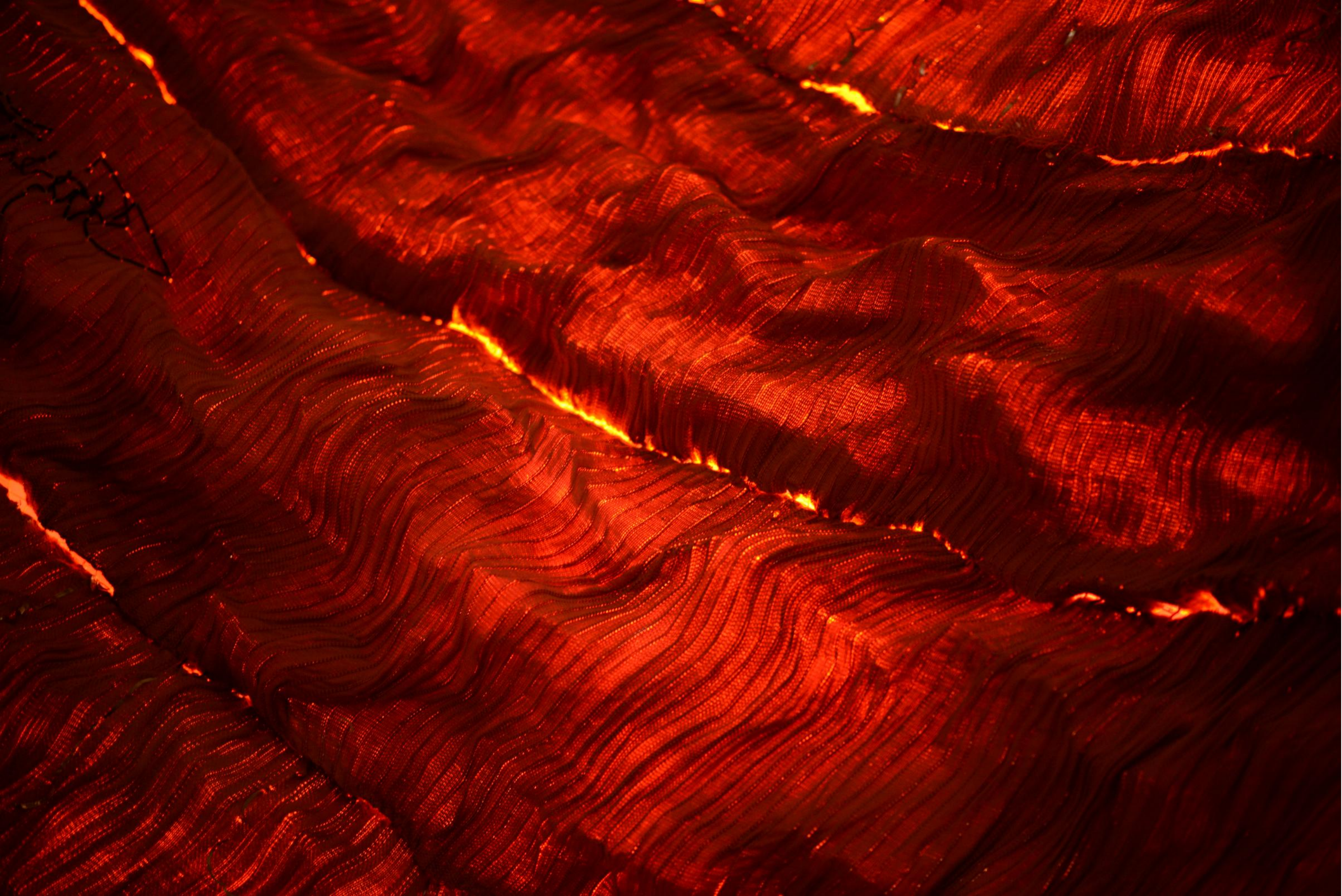
It is artist **Anthony Hearsey's** visualisation of one month of data of locations where fire was detected in Australia. Metaphorically, the fire is compared to the burning inside a woman. She bears pain within her. As she burns herself inside.

Installation

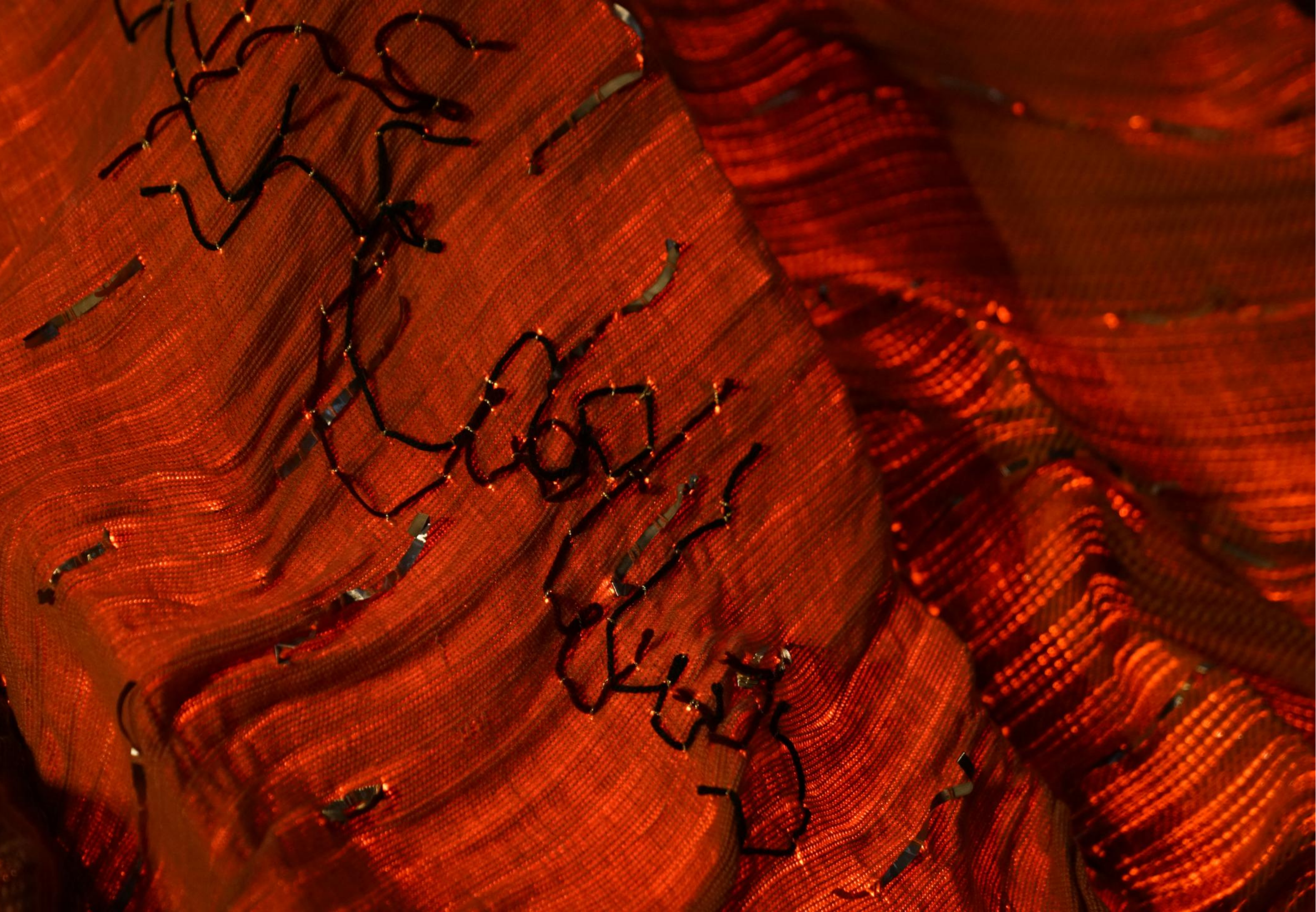


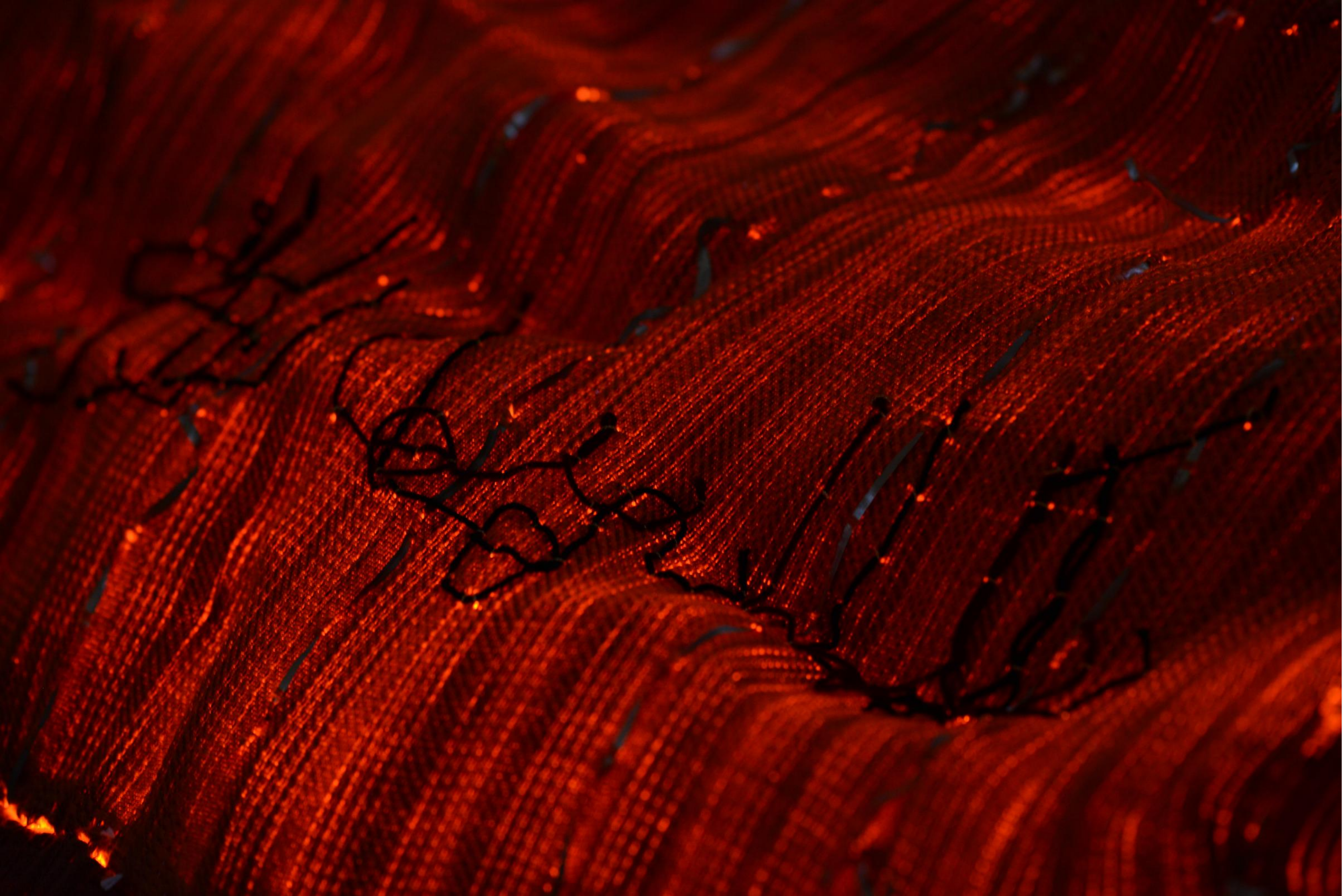
SOCIETY WANT A
WOMAN TO MOULD
HERSELF
ACCORDING TO
THEM. THE ABILITY
OF A WOMAN TO
SUCCESSFULLY
ENDURE
OPPRESSION TO
GAIN STRENGTH
MAKES HER
STRONG.

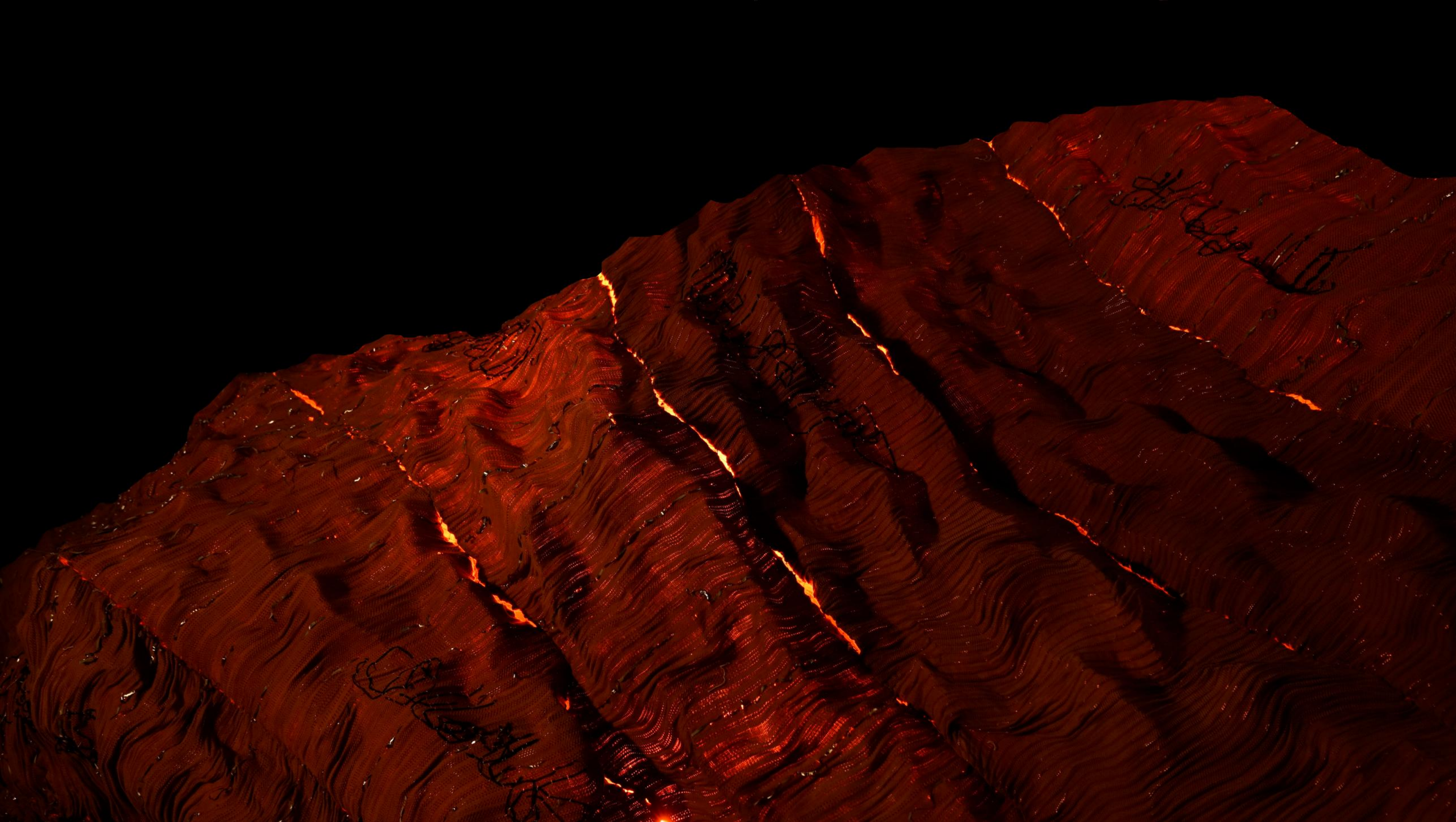


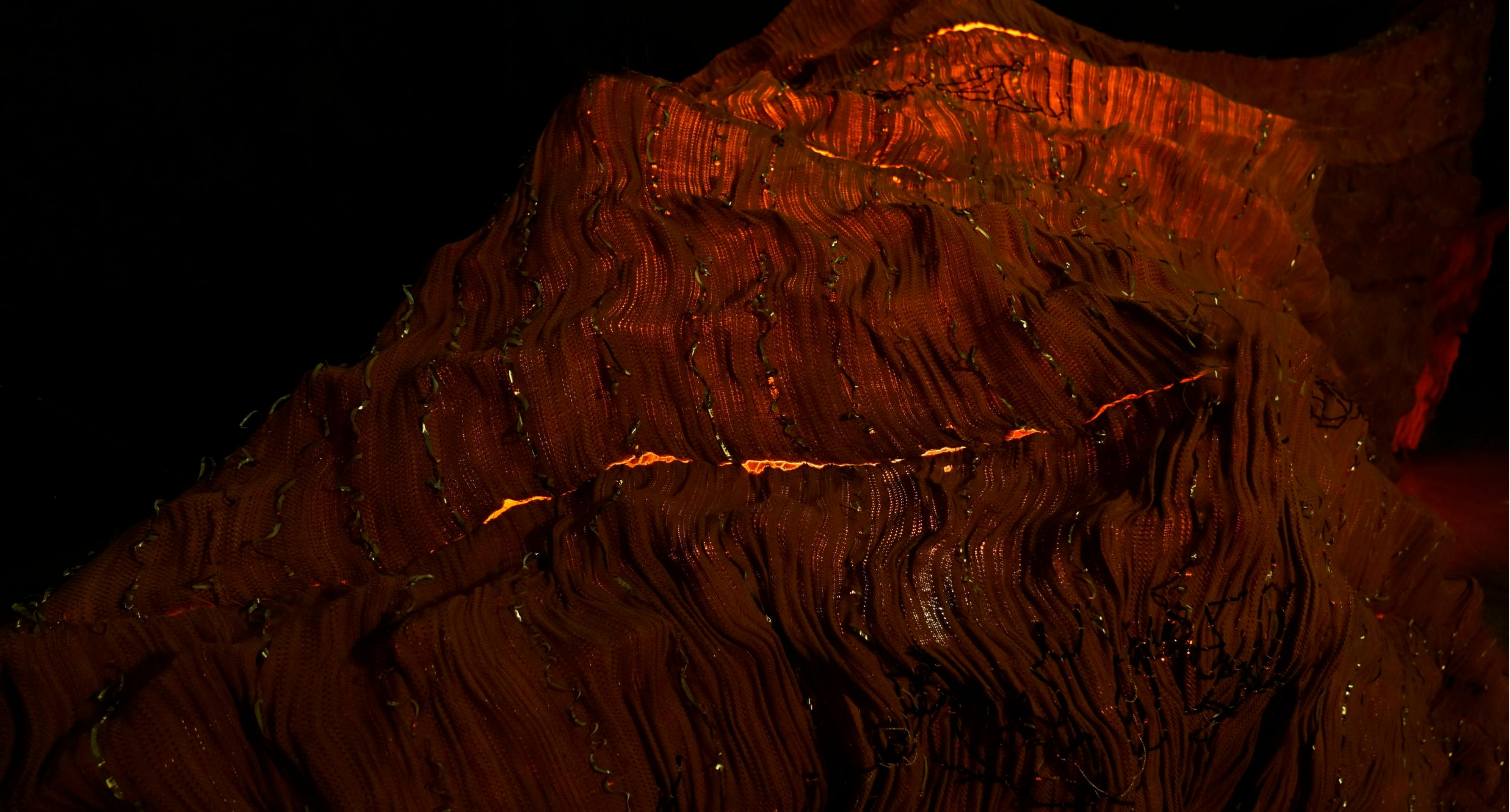


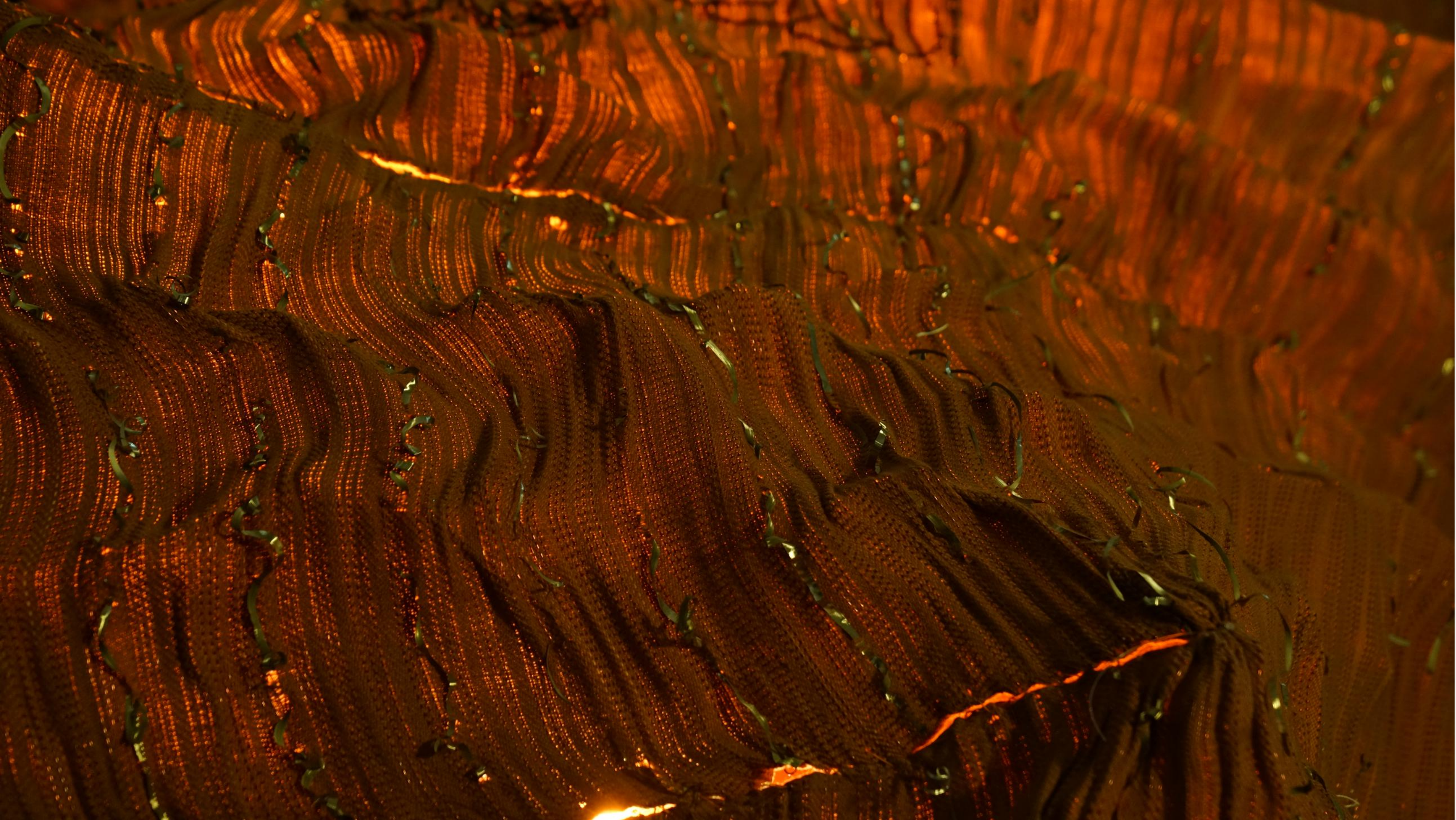
THE
FIRE IS
COMPARED TO THE
BURNING INSIDE A
WOMAN. SHE BEARS
PAIN WITHIN HER.
AS SHE BURNS
HERSELF INSIDE.



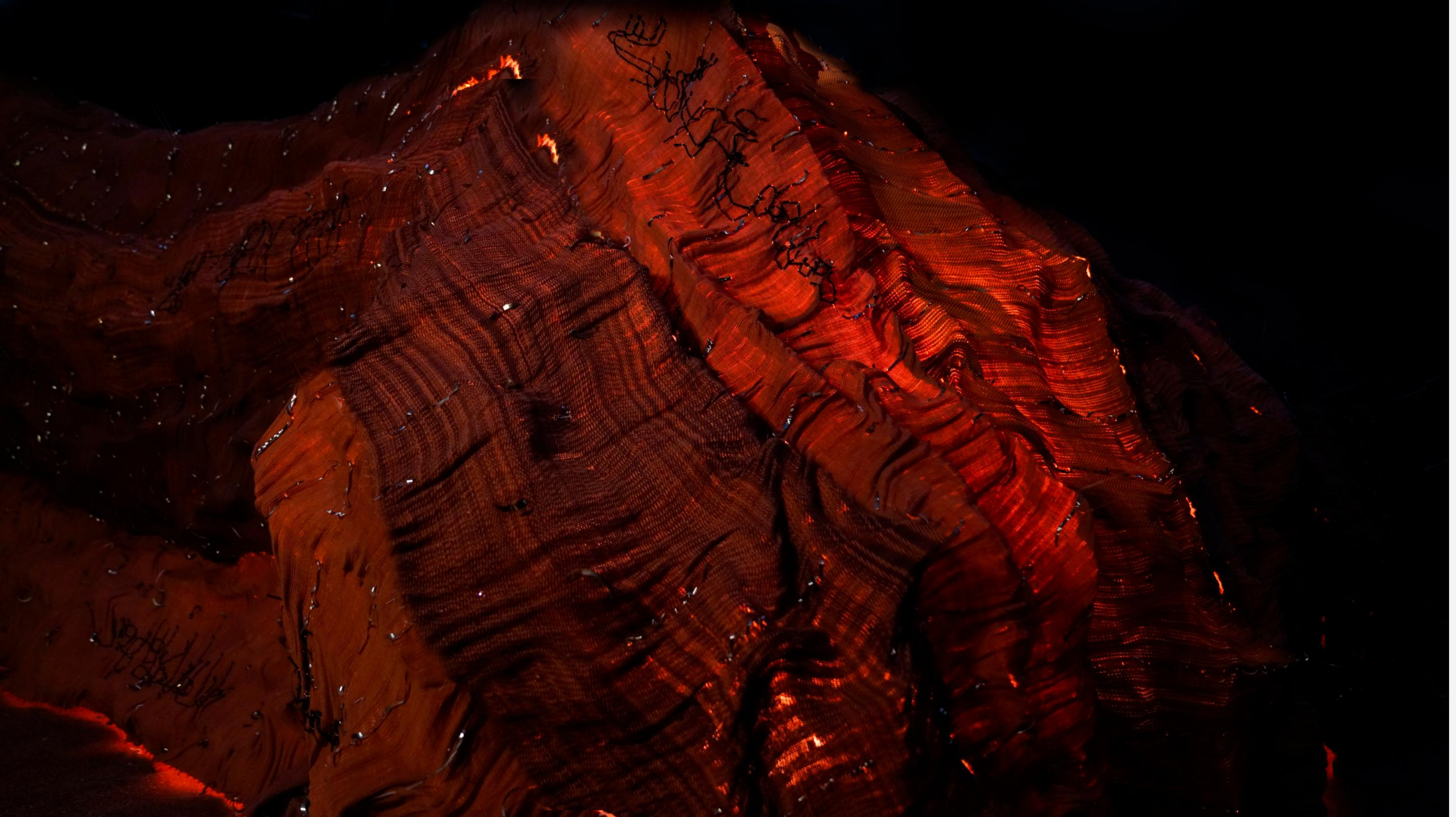








METAL
SCRAPS
ARE WEAVED
BECAUSE
IT CUTS THE FIBERS
WITH ITS
SHARPNESS.
SIMILARLY,
OBSTACLES IN
A WOMEN'S LIFE
BREAKS HER INTO
PIECES EVEN THEN
SHE IS CONNECTED
WITH THEM.





WOMB
INSTALLATION THAT ASKS THE
VIEWER
TO SLOW-DOWN, WALK GENTLY AND FEEL THE DEPTH AND CONTRIBUTION OF THIS
GENDER.





