

FASHION MAJOR THESIS 2020

Mah Noor Asif

F2014-105



BEETLES

When it comes to a contest of numbers beetles are undisputed winners. There are around 300,000 species in the world today in which one fourth of the animals are known as beetles. Also 400,000 species make up about 40% of all insect species. They are incredibly adaptable to almost any climate. Beetles are mostly found on land and in fresh water or damp places, Beetles usually live where they can find food.

DESIGN

Their design is variable as their habitat. They happen to have a very decorative display. Some of them have different genes which is why they have different skins or patterns in the same species.

Their body is divided into three parts

1- Head (eyes, antenna)

2- Thorax (legs are spread all over the body excluding head)

3- Abdomen (wings)

Beetles have such designs that they can camouflage themselves in the background to hide or save themselves.

Beetles can both hurt and help the environment. Some of them destroy the crops while others help to get rid of the garbage, eat dead trees & help pollinate flowers.



Beetles wings are hidden under a tough cover called elytra which are like stiff wings in flight. They also have a very tough exoskeleton.

Microscopic ridges distort the light to make the exoskeleton shimmer like a rainbow but don't be fooled by their size as they have the ability to survive huge impacts.

THESIS STATEMENT

- ▶ *Lights will guide you home.* As a metaphor, as an inspirational quote, a memorable song or even a cool Instagram caption, no matter how you look at that quote, it instils a sense of belief in you; a belief of a guide, a pathway and a direction to utmost comfort. For me it holds so much value that I use it as a driving force behind my project. In life our struggles are endless. It's always the darkest before the dawn. Caught amidst social inceptions, redundant cultural beliefs, incomplete religious norms and a fatigued state of mind; I've always been surrounded by masked individuals. Not heroes with capes, but people fuelled by jealousy and envy. I've always struggled to find this light in my life. A light that helps me to push through every time I fall. A light that helps me to reconnect with myself and lead me to my 'home'. My thesis is purely based on how I've copped with such circumstances, one after another. It reflects how I've come to the realization that not everyone is worth your trust. That being said, I have then related my words with beetles and its beautiful yet very unique body structure that includes two set of wings that no other insects have. It differentiates the fragility and density of the subject. Using beetle wings and their forms as a symbol. The fact that I can easily differentiate between the genuine vs the fake, how I've managed to move on from a broken past; my whole thesis is me finding this light that keeps driving me forward.


RESEARCH BOARDS

- Beetles belong to the insect order Coleoptera. This is the largest order of insect.
- There are more than a quarter million beetle species in the world.
- They are prominent decomposers.
- They have a very decorative exterior, which makes them very unique.



RESEARCH ON BEETLES / FIREFLIES

BEETLES
(Insects)



What are beetles?
Beetles are a group of insects, they differ from other insects because of their wings. They are agriculture pets. 400,000 species make up about 40% of all insect species.

Beetles in human culture

- sacred scarabs of Ancient Egypt
- botching art
- pets
- fighting insects
- decorative displays
- food (over 400 species)
- help control insect pests
- largest order of insects.

Firefly
The Lampyridae are a family of insects in the beetles, they are soft bodied beetles, commonly called firefly or lightning bugs for their conspicuous use of bioluminescence during twilight to prey.

Fireflies & their Specialized organs

- lower abdomen
- chemical reaction
- they can live in pairs for a day
- specialized cells
- live on standing water
- Luciferin chemical is found in them

Fact
one out of 5 living things are beetles

Classification:

- Class: Coleoptera (200 spp.)
 - Order: Aniselmata
 - Suborder: Myrmeleontina
 - Suborder: Hydroptera
 - Suborder: Coleoptera
 - Order: Phyllota
 - Suborder: Scutellata
 - Suborder: Staphylina
 - Suborder: Curculionata
 - Suborder: Hydrophilina
 - Suborder: Hydrophila
 - Order: Elateriformia
 - Suborder: Heterosternina
 - Suborder: Derridae
 - Suborder: Boreidae
 - Suborder: Byrrhidae
 - Suborder: Clastrolina (Fireflies)

MOVIES / BOOKS / DOCUMENTARIES

- Curious of the Fireflies (2008)
- The very dark night
- Silent! Speak! The wonder world of fireflies
- The fireflies
- The flashing fireflies
- Fireflies
- How to survive as a firefly
- The moon inside
- Firefly farm
- The light of the firefly
- A season of fireflies, December
- Fireflies in

SYMBOLISM

As a creature of light, it should come as no surprise that the firefly is a symbol of illumination. They are truly majestic but under-appreciated because of their ordinary, uninspiring appearance in the day time.

FIREFLIES IN CHINA

• long ago, it was believed that fireflies were a product of burning grasses. Ancient Chinese manuscripts hint that a popular summer pastime was to catch fireflies and put them in a transparent box to use as a lantern.

• Enchanting fireflies paint the sky

• In A Flash: Firefly communication

• Fireflies glowing in sync to attract Males

• Spectacular mating dance

FIREFLIES IN JAPAN

There's a Japanese legend that lightning bugs are actually the souls of the dead. Some also say that they are the spirit of the warriors who fell in battle, they also have been a metaphor for passionate love in poetry.

COMMUNICATION

So fireflies not only provide light show in the dark but that's also how they look or send message to the female fire that they are ready for love.

Juvenile Stage

fireflies spend the majority of their lifetime under the ground which also known as teneral stage. Almost for 2 years.

FIREFLIES

The Lampyridae are a family of insects in the beetle order Coleoptera with over 2,000 described species. They are soft bodied beetles that are commonly called fireflies or lightning bugs for their conspicuous use of bioluminescence during twilight to attract mates or prey.

DEATH SUPERSTITION

There was a Victorian tradition that if a firefly is in your house someone was going to die soon.

WHERE TO LOOK

Fireflies are easy to spot - go through their flashing lights. They typically love very grassy, marshy areas and regions near the edge of ponds, lakes, streams and other bodies of water. They can thrive under low-hanging trees in forests and fields, and even in your yard or vegetable garden.

CATCHING A FIREFLY

To catch a firefly you have to net like one and attract them with an external light. Kids maybe respond to that fireflies. many scientists who have studied fireflies believe LED lights attract them the most. Get a blue diode on the light because they don't respond blue light the same way they see other colors.

A SUMMERTIME LIGHT SHOW

Tennessee fireflies show at midnight they capture the show of nature right after getting their at midnight the twinkling begins to pitch back as if the dance has come to settle in the forest. A vital component of fireflies. Its night not easily captured on camera.

FIREFLIES INSPIRED LED DESIGN

Scientists have been studying fireflies to make LEDs now they are seeking a new brighter, LED, scientists in the university of Namur, Belgium. And a special firefly was found to produce the more light than the other fireflies from Belgium. And now those LEDs inspired by the firefly will be in the market in few years.

A firefly is way more efficient than a light bulb, flash so fast produce most bulbs and LEDs are also inspired from firefly.

"It's Almost like the forest is breathing"

These species glows in swarms and flares at once. supernova fireflies Nowhere in the western hemisphere is there a larger population of fireflies and night time at 2 camp ground.

Scientific name for the synchronous fireflies are patersonia carolinensis one of the 17 species in the mountain.

FIREFLIES



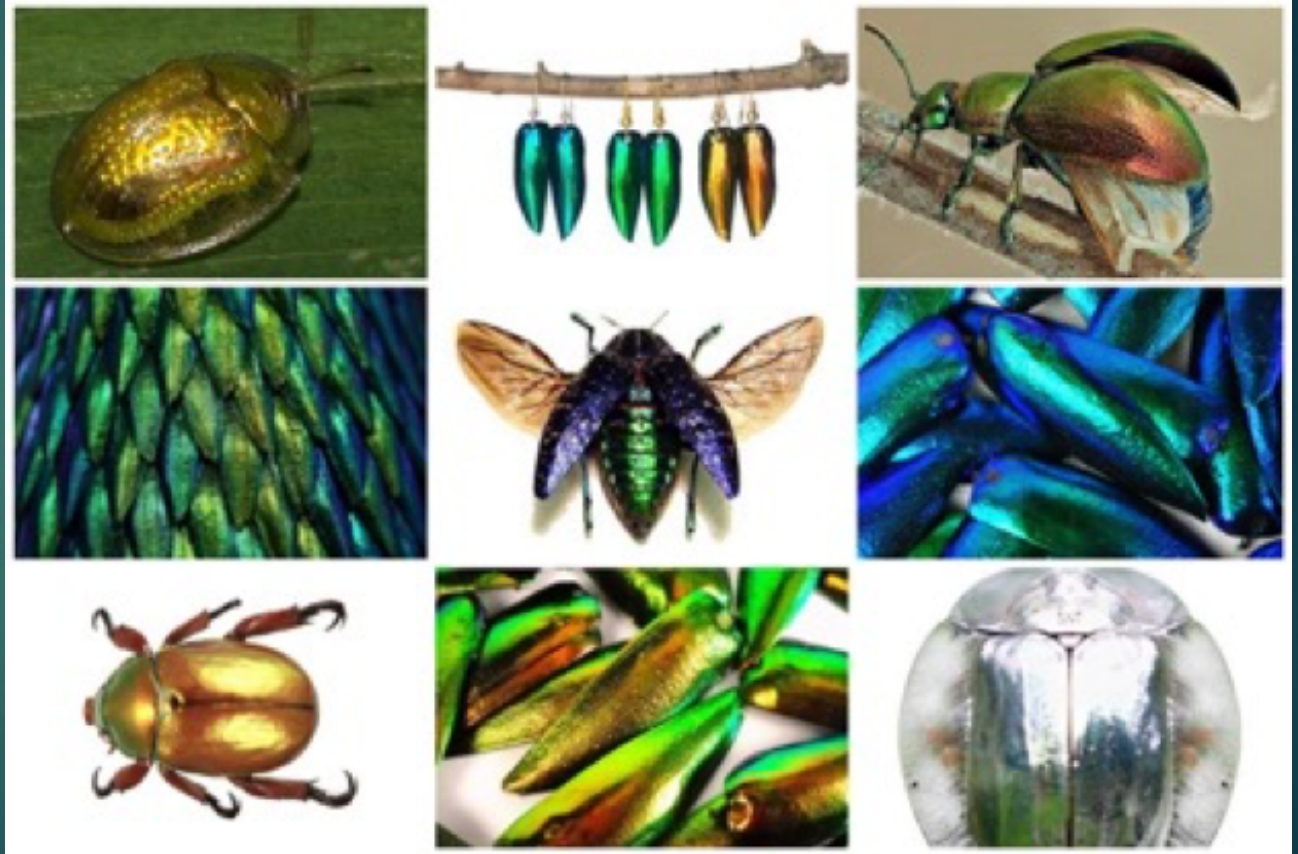
RESEARCH BOARDS

FIREFLIES

- Fireflies are the most unique soft bodied winged insects, also known as glowworms or lightening bugs.
- There are almost 2000 firefly species.
- They produce a chemical reaction inside their bodied that allow them to light up.
- Fireflies are also lampyridae which means 'to shine' in Greek language.
- Fireflies have a synchronized light show in great Smokey mountains national park, TN, USA.
- These insects are intuitive by nature.
- They communicate with light.
- The abdomen of the insect lights up in three different colors. Yellow, green & orange.

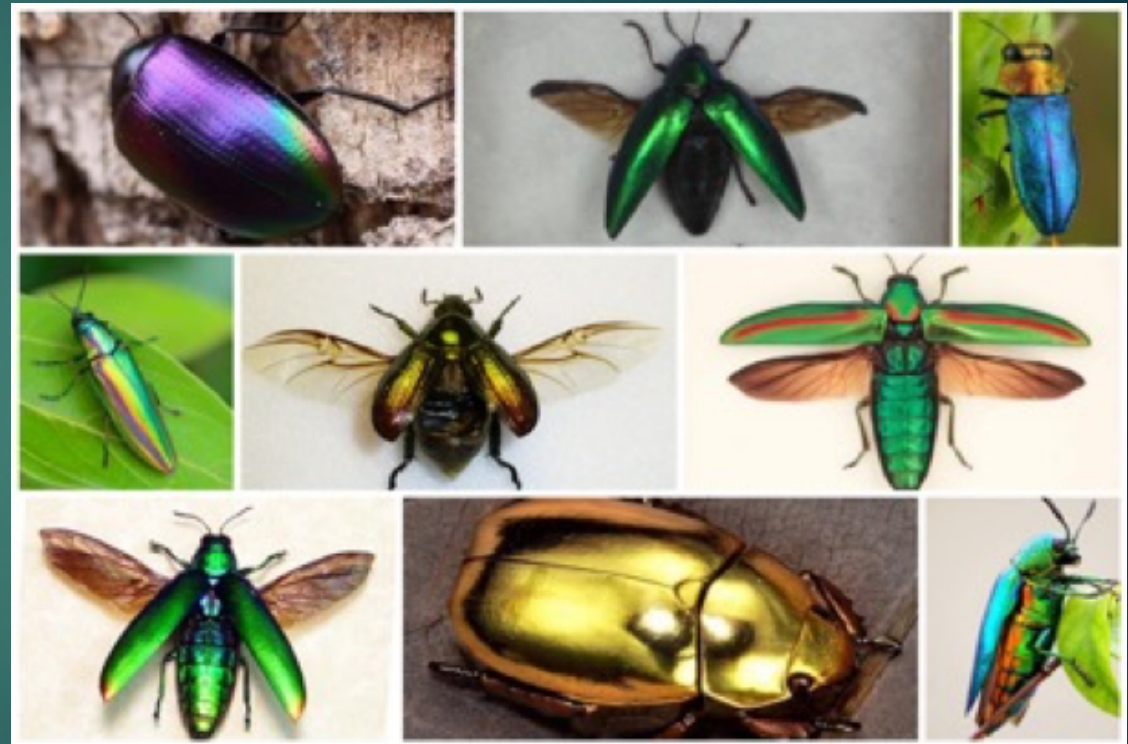


JEWEL
BEETLE



JEWEL BEETLE

- Jewel beetles are famous for their unique shiny exterior.
- These are found in south Asia and Australia.
- They have a colorful shiny shell over them.
- Jewel beetles reflect light to change their colors.
- They only live for a week maximum.
- Jewel beetles are known to be an endangered species.
- They are known to be the most beautiful looking beetle.
- They are also known by the name metallic shield bugs.
- They are a subjective to sign of good health and prosperity.



RHINOCEROS BEETLE

- These beetles are found mostly in united states.
- Rhino beetles are packed with powerful muscles.
- They can lift up to 85x their weight.
- Also called Hercules beetles because of their herculean proportion.
- They can grow unto 6 inches size.
- These insects are also used as pets and some make them fight with other rhino beetles for fun.
- They are subjective to immortality, power, strength, consistency and lucky charm.



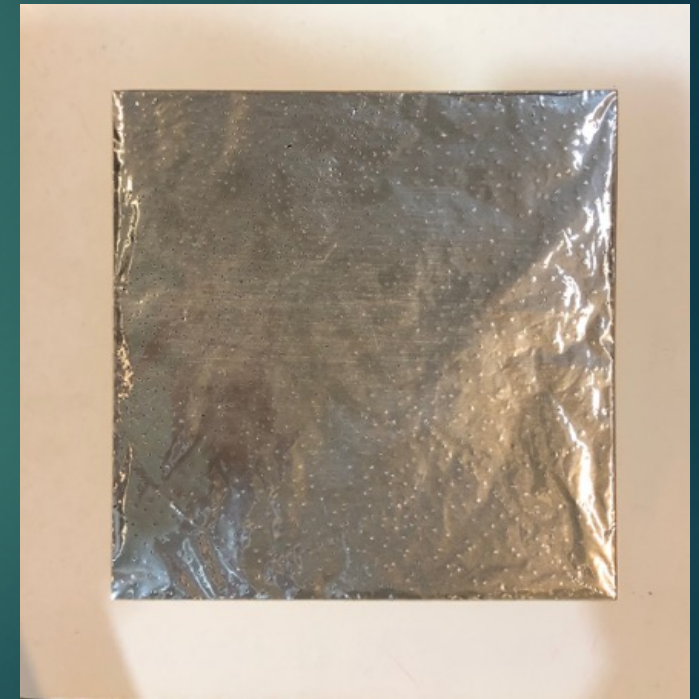
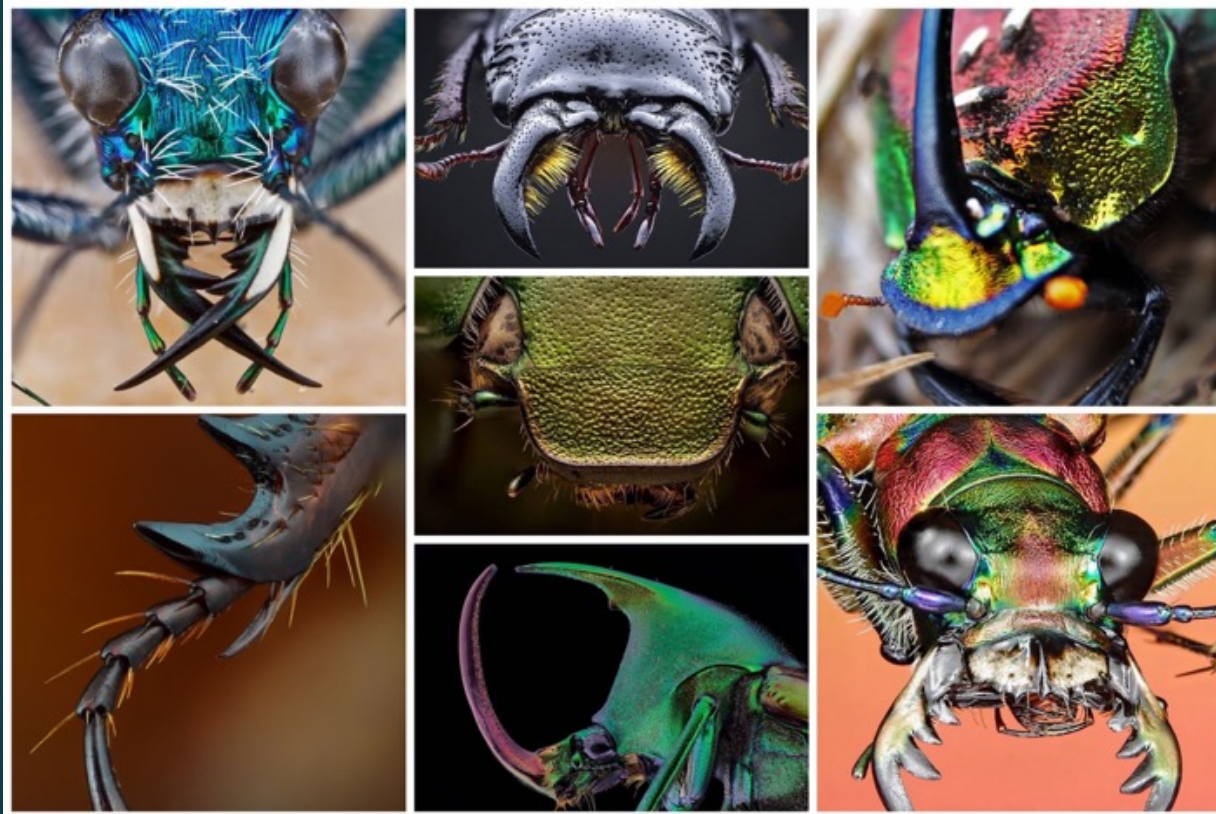
LADYBUG BEETLE

- Ladybugs are very famous for their shiny colorful shells and black dots.
- They are found in north America.
- Most of them have seven spots on them.
- They are harmless insects.
- They have 6 short legs and the print on their shells helps them escape predators.
- They also release a specific gas and play dead when in danger.
- They hibernate in winters and only come out of the hiding in spring until fall.
- They have a life span of one year



TEXTURES

- Beetles have a hard shell on their exterior and most of them are decorative and have macro dots like texture on them. Some have hair like structures on the mandible.



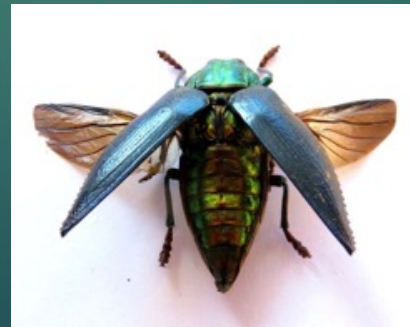
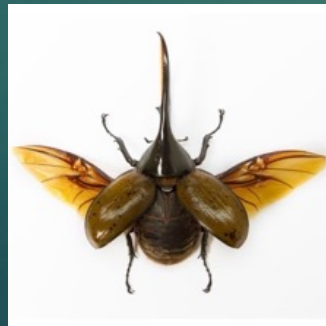
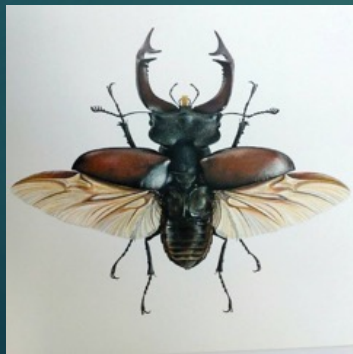
COLOURS

- Different colors of beetles have different subjective.
- Red; love, energy, strength, passion.
- Green; good health, regeneration, intuition.
- Blue/black; prosperity, good luck, solidarity, power, immortality, change.

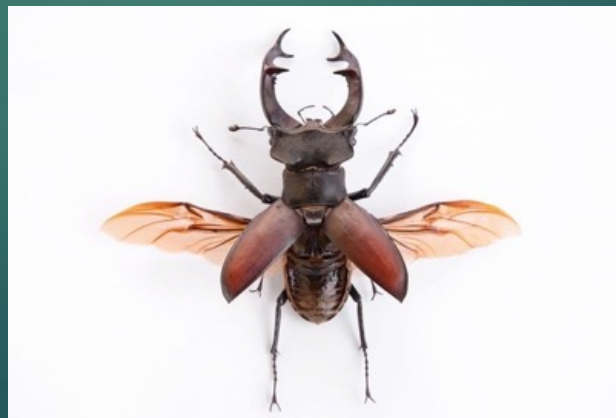
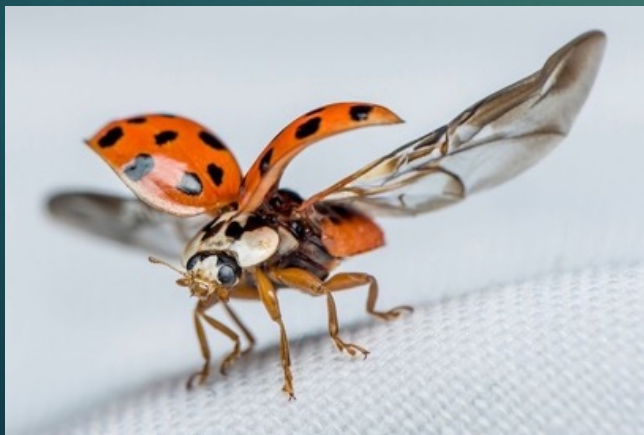
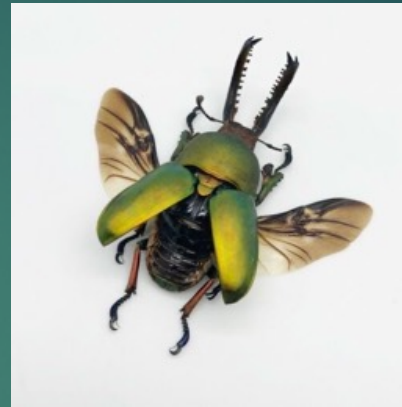


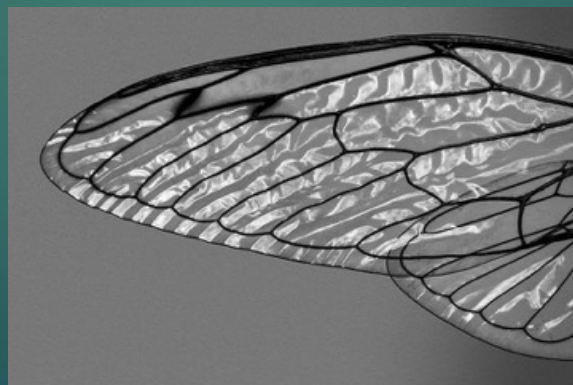
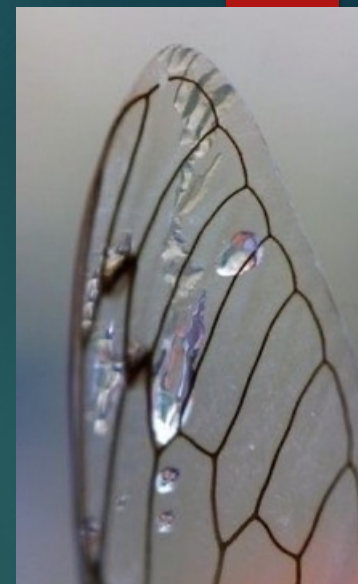
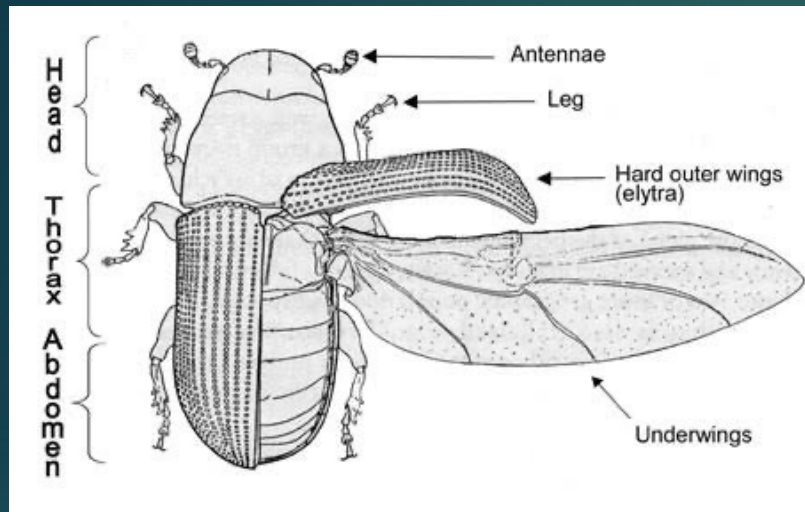
DUAL WINGS

Beetles are the only form of insects that have 2 sets of wings, one that helps them fly and the other set to protect the fragile wings under them as a hard exterior shell. This makes them unique and one in a million species of insect.

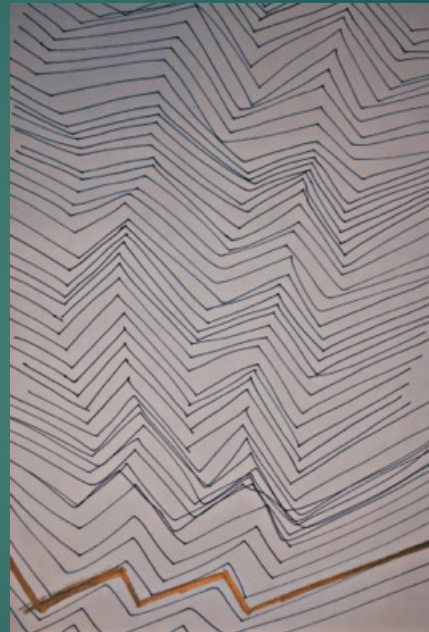
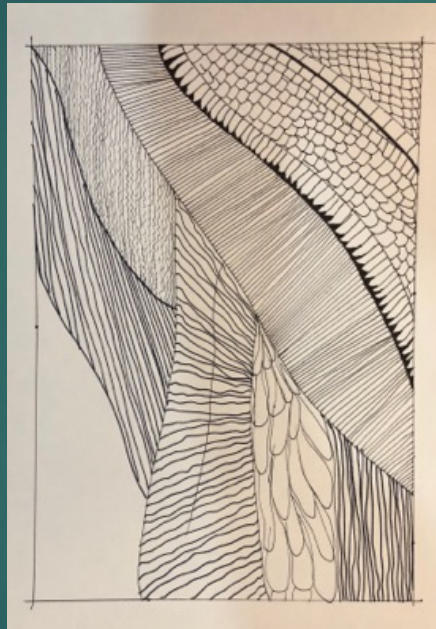
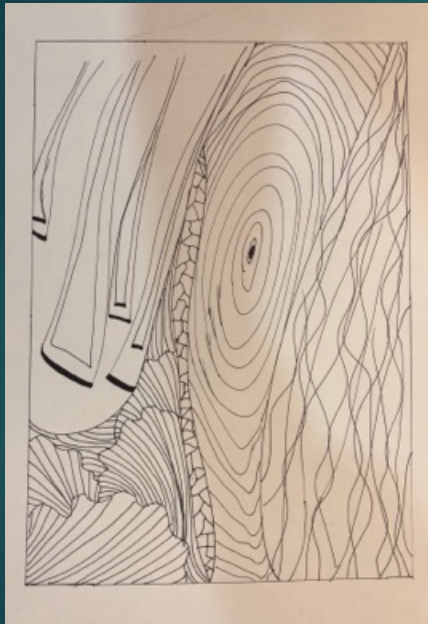


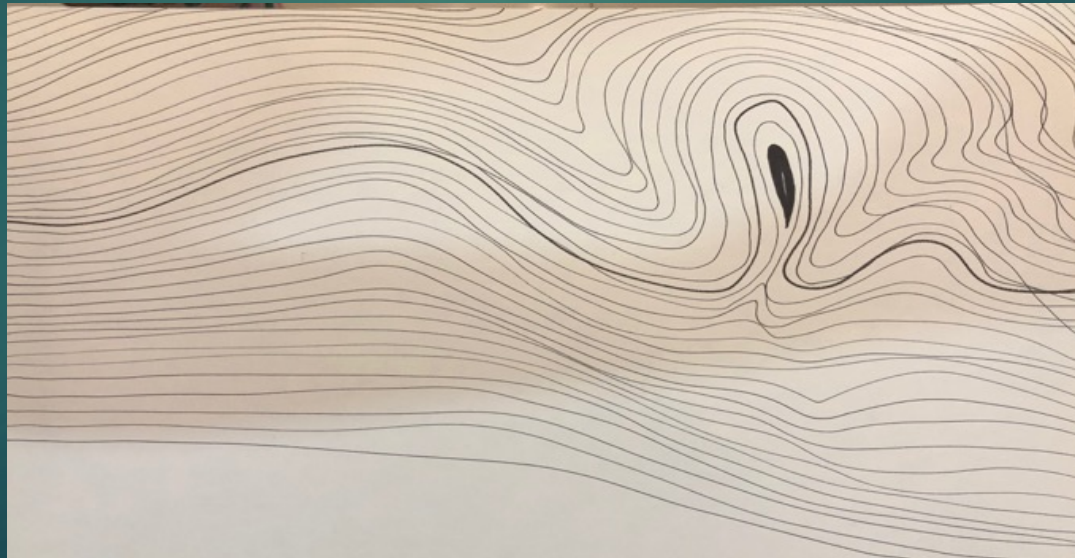
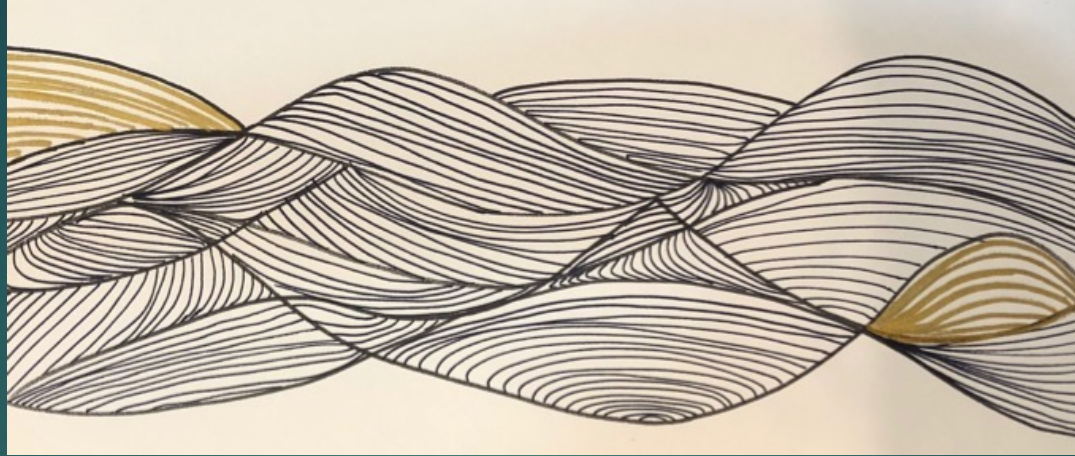
- Two sets of wings.
lower wings are transparent and fragile.
The second pair of wings are a shell like structures protecting and shielding the other wings when not in use.



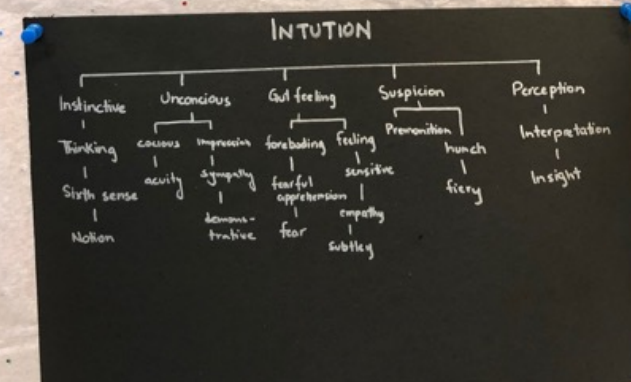
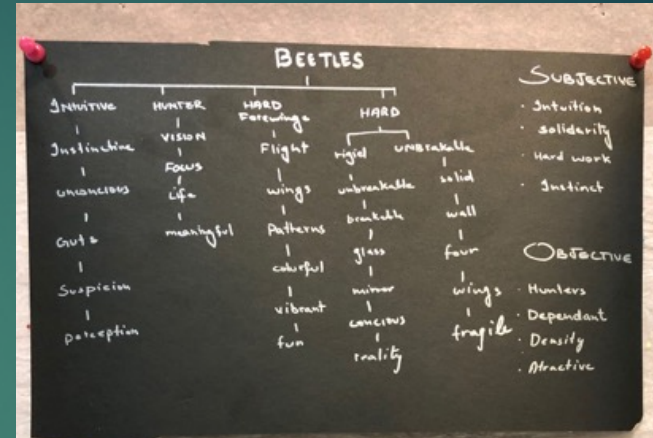
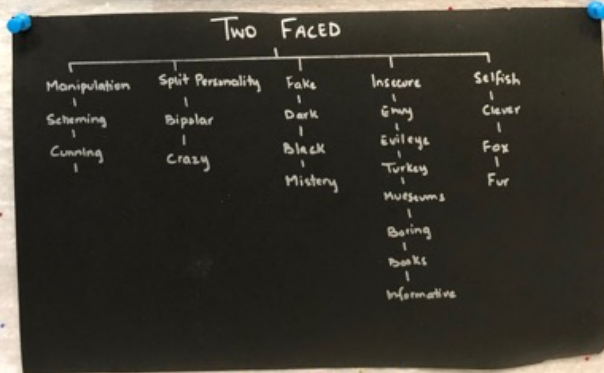
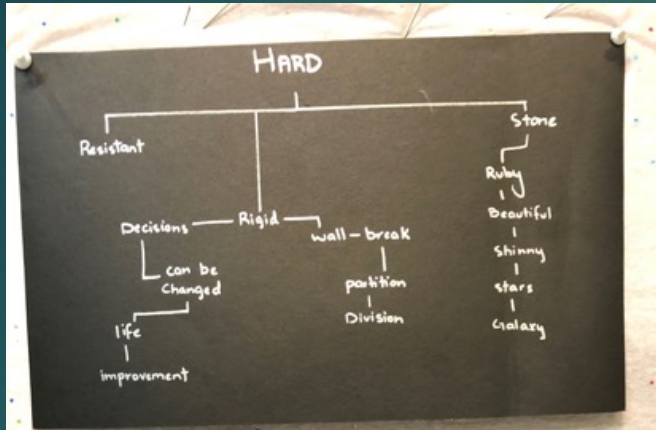


DRAWINGS INSPIRED BY THE COMPLEX WING NETWORK





MIND MAPS



ASIAN CULTURE

"Grin and bear it."

"Confrontation and aggression are frowned upon."

COLOUR PSYCHOLOGY

Black: power, influence, strength, empowerment

Red: love, energy, strong, passion

Green: good health, prosperity

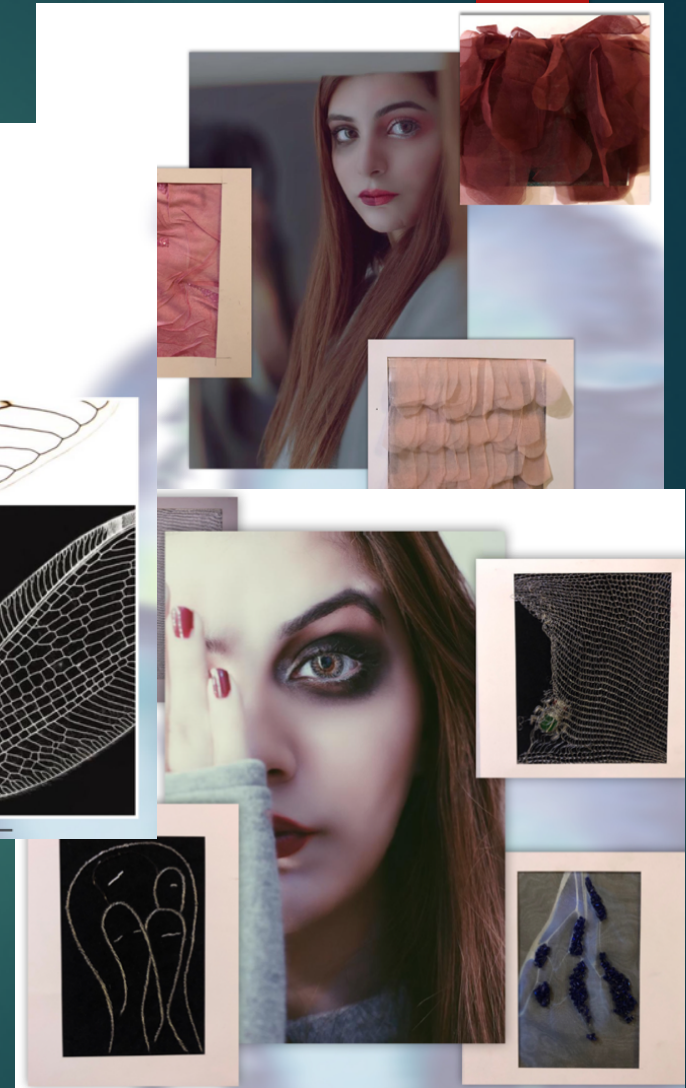
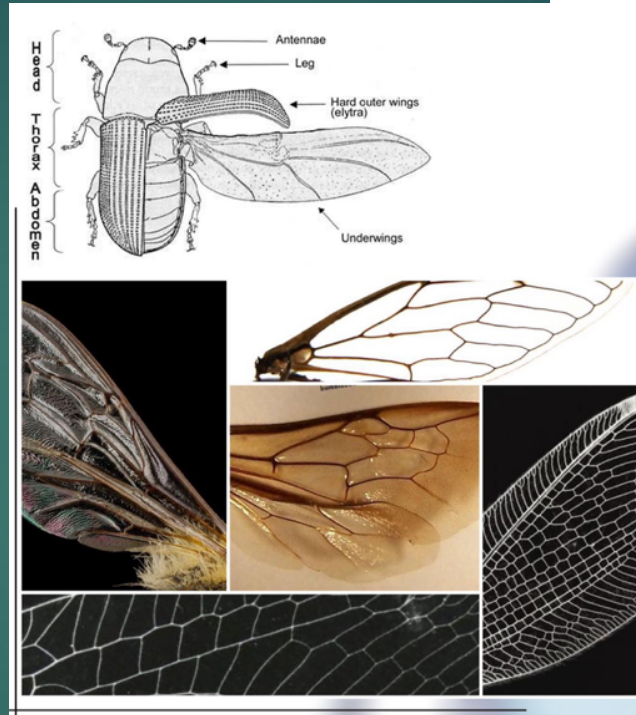
- Struggles and setbacks are a part of life, and we all, at least once, experience the inevitable circumstance where we have to find that sense of belief and inner strength to stand up for ourselves. We hide and shy away from the world; to blend in is the norm, to be a part of a group or a cause or a notion that we urge and mentally prepare ourselves that we are okay when we clearly know that we are not. Saying yes when we have to say no, shaking hands when we have to wave goodbyes, smiling when we want to cry; we forcefully hide ourselves away from everyone to protect ourselves even though we're the ones getting hurt in the end. I relate my work with the most unique and interesting species that God created; beetles. Their beautiful designs and two sets of wings distinguish them from the rest and I find it extremely interesting how they cover themselves using their hard exteriors to protect their soft interiors, a mirror image of the society we live in today.

FUSION

The uniqueness and beauty of the insect lies in the 4 wings, the exterior being **rigid** and the interior being **fragile** gives a unique characteristic to the thesis.

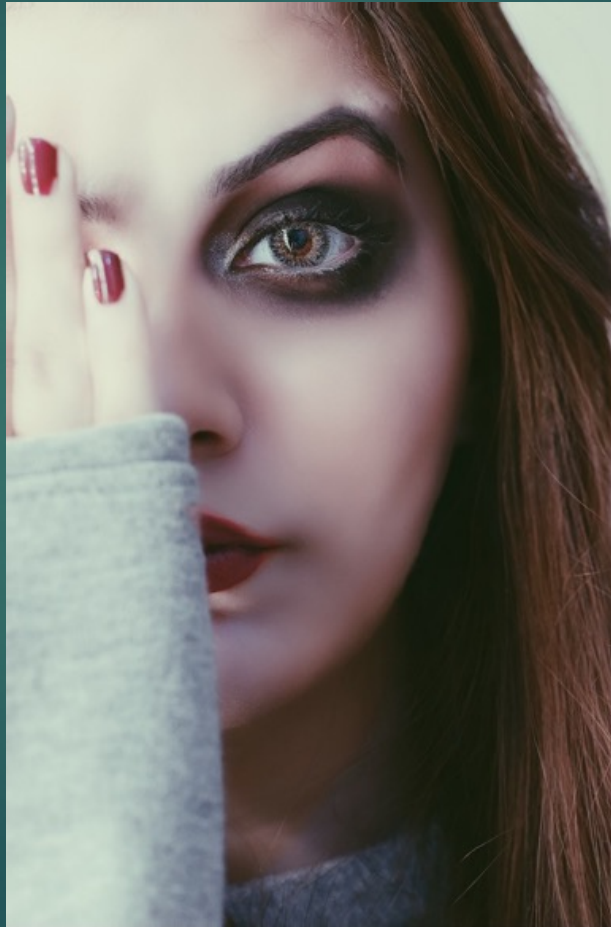
I relate my work with the most unique and interesting species that God created; beetles. Their beautiful designs and two sets of wings distinguish them from the rest and I find it extremely interesting how they cover themselves using their hard exteriors to protect their soft interiors, a mirror image of the society we live in today.

Keeping the wings of a beetle in mind I have further shown the delicacy and the roughness in the form of fabrication.



DECEPTION

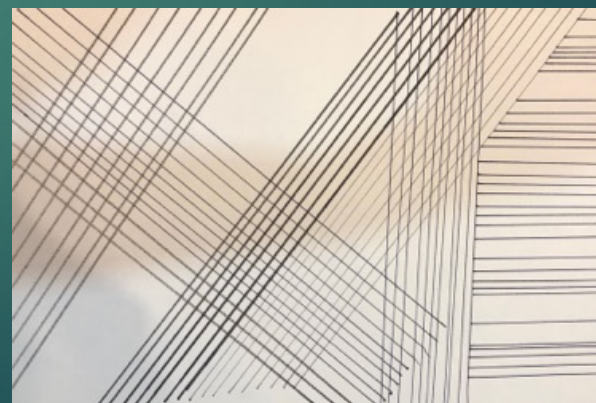
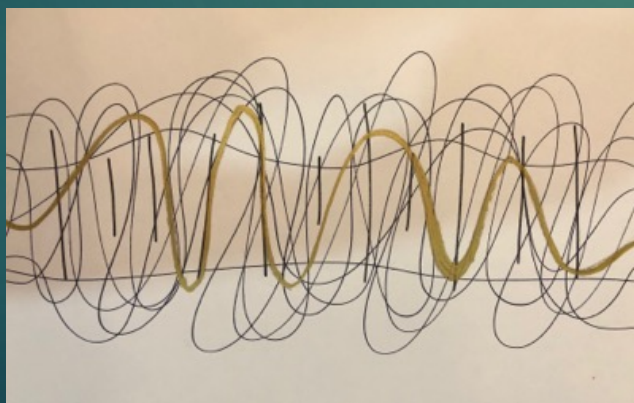
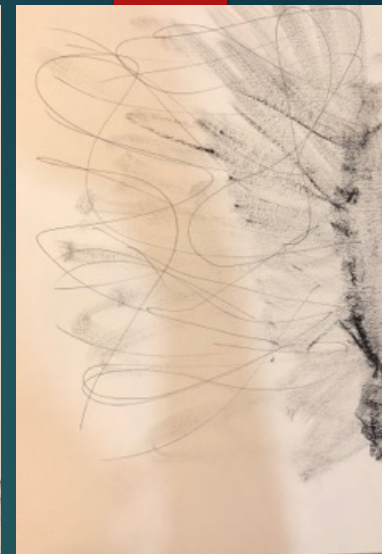
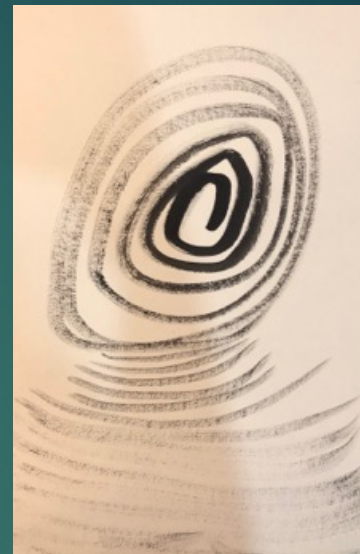
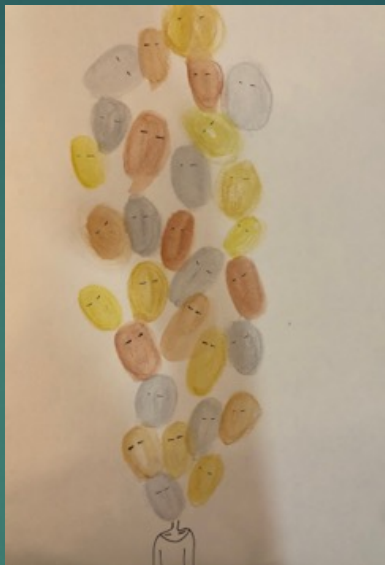
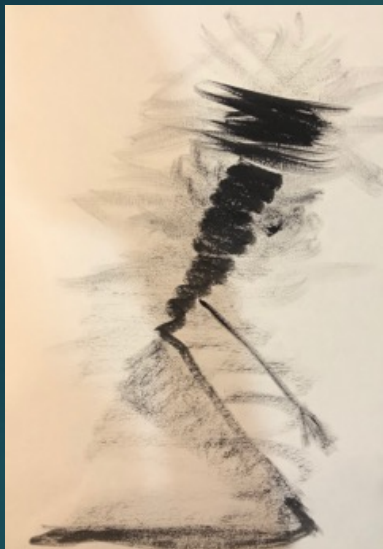
THROUGH MAKEUP INSPIRED BY THE WINGS OF BEETLE



MOOD BOARDS

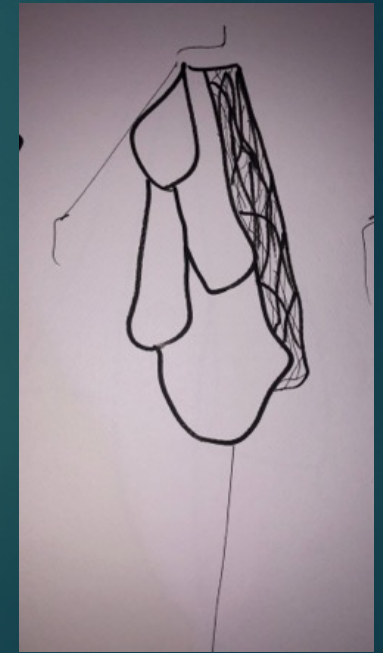
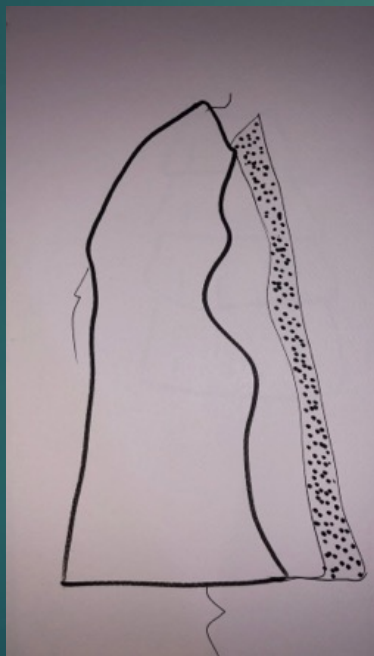


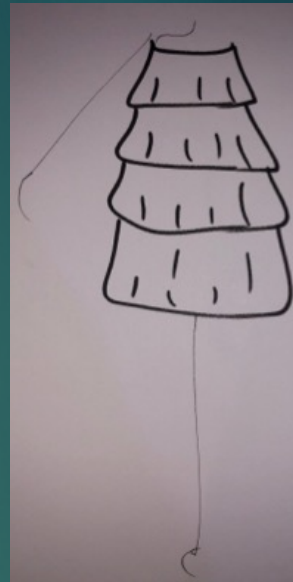
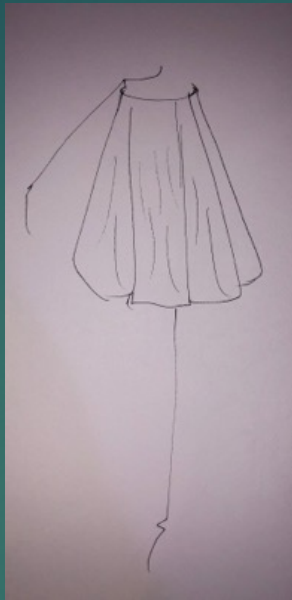
DRAWINGS

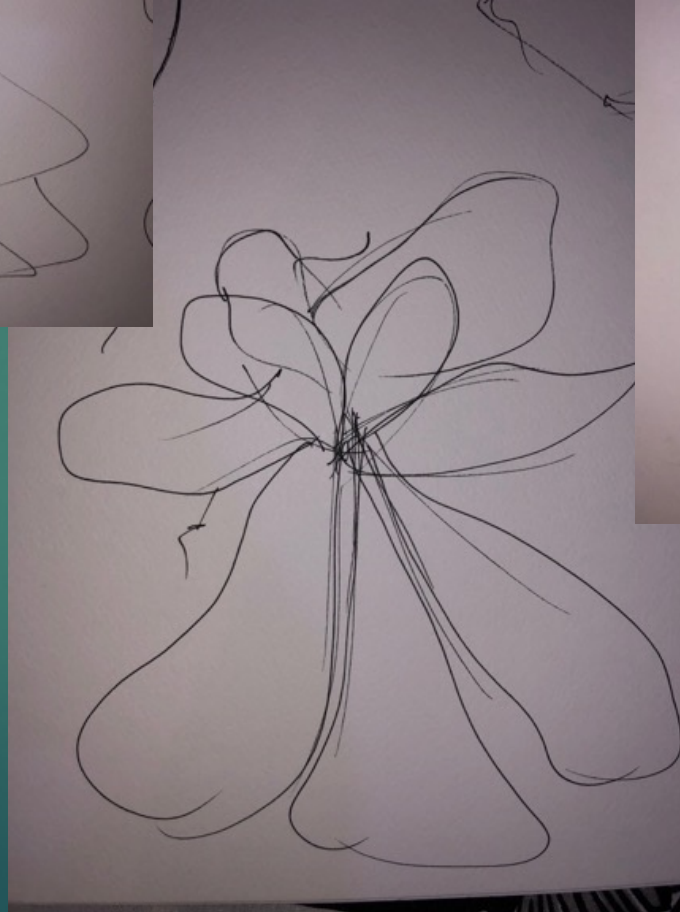
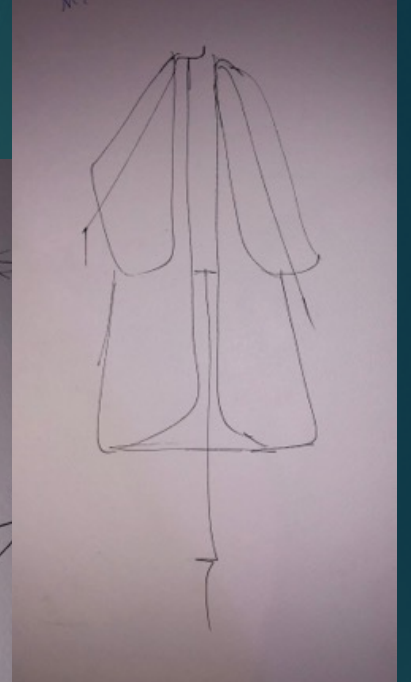
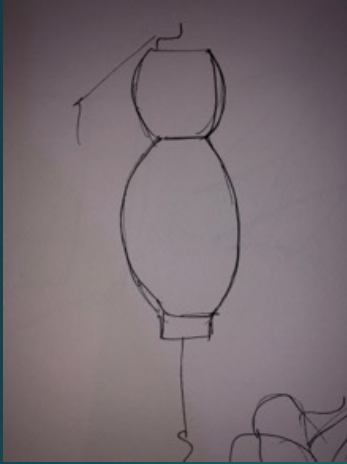


DEVELOPMENTS

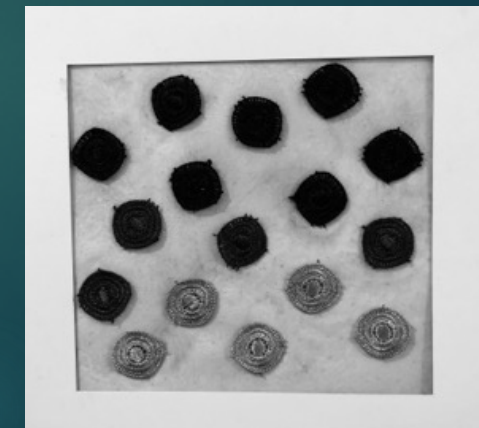
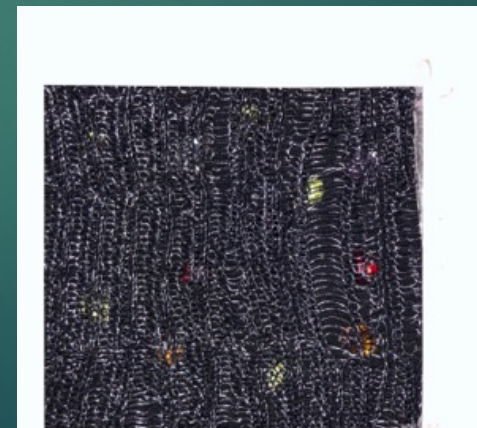
- Style that I've opted is erogenous & chic with different layers of fabric.

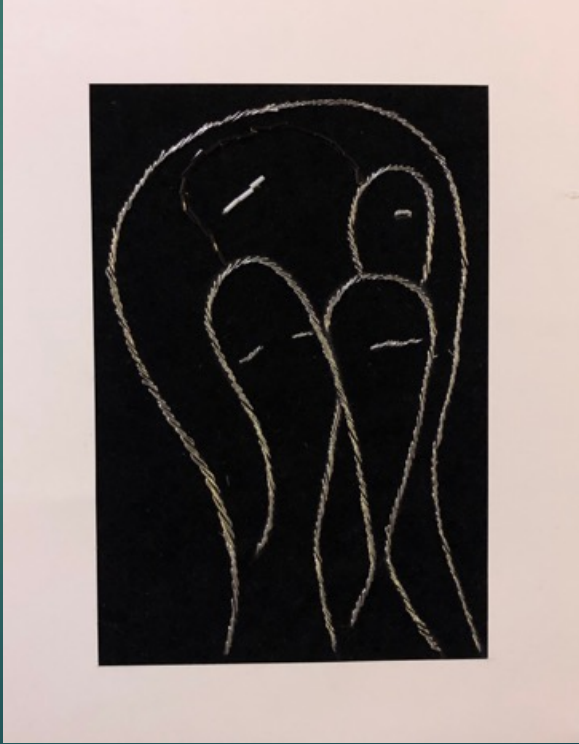
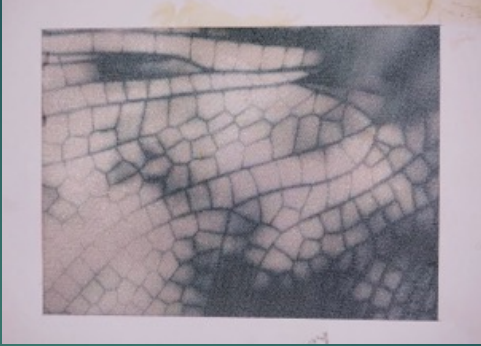
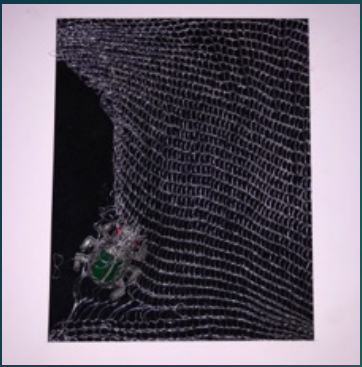






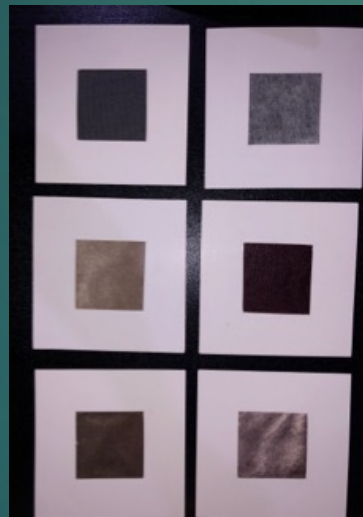
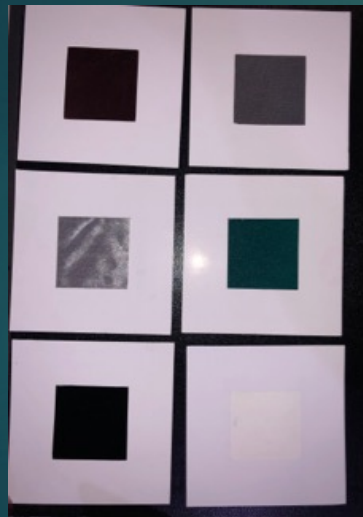
FABRICATIONS/PRINTS





FABRIC SAMPLES

- Fabric that I have collected & used are either see through and very delicate or thick & opaque to give garment a depth.



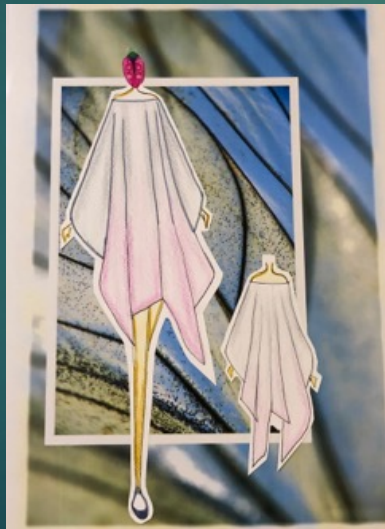
COLOR BOARD

Color board made by silk fabric for the final garments.

- Teal
- Deep lake
- Storm
- black

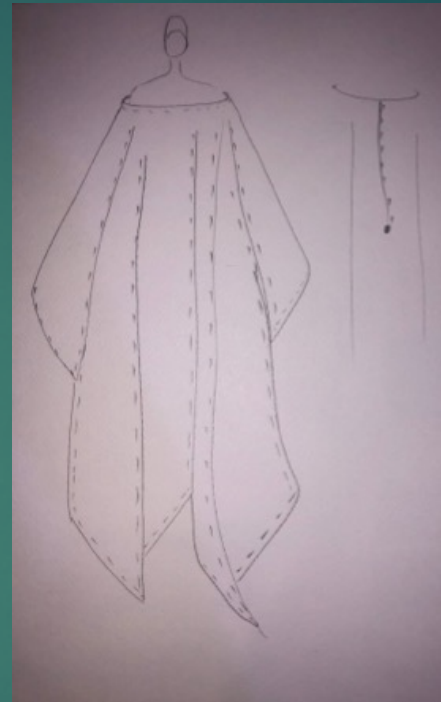
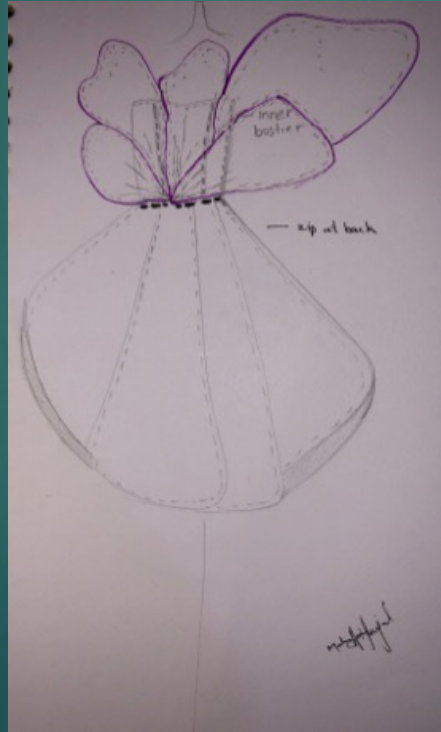
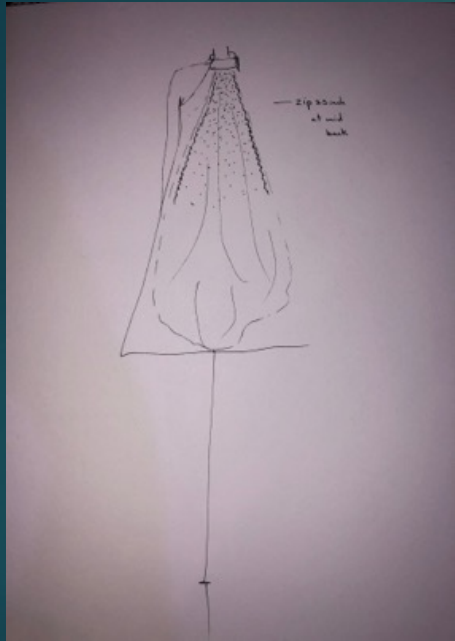


FINAL SHEETS





TECHNICALS



MINI THESIS

Mini thesis display was a challenge for me because I had to display my work in the center of the classroom and for that I used iron rods hung with ceiling, attached a silk grey blind to the one at the back and a organza sheer blind on the front rod to display my work.



FIRST GARMENT

This dress is called **BLUE BEETLE**.

A blend of woven tufted smooth fabric with a subtle texture and strokes, a short dense pile giving it a distinctive soft feel tailored in a knee length dress with halter neck, attached to it a wing shaped organza panel fully embellished with Swarovski's and beads on the front panel & at the back creating the structure of a wing.



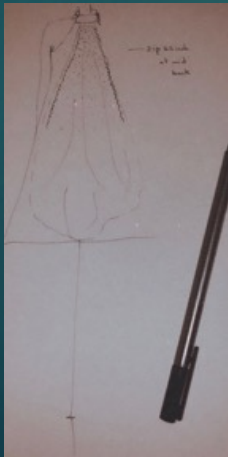


DETAILS



BACK





SECOND GARMENT

GREY ANNEX

A set of wing like structures designed with a digital printing technique using a complex network of veins on a fine organza fabric forming the top part of the dress, embellished with stones studded closely giving an illusion of small clusters, which is attached to the skirt from the front with a rich black velvet bustier to give it a complete finish.



FRONT



SIDE



BACK



CLOSEUPS



BUSTIER



THIRD GARMENT

EMOTIONAL BAGGAGE

A blend of impressions of a beetle's exterior, printed on an organza fabric using sublimation printing technique forming an enormous sleeves silhouette with a teal silk Bardot dress which radiates decadence & sophistication.



FRONT



SIDE



DETAILS



FABRICATION



FOURTH GARMENT

ATLANTIS

Hundreds of tiny wings attached to a shiny surfaced tube dress paired with a set of wings printed with the texture of matrix of a beetles eye ball, front and back.



FRONT



SIDE



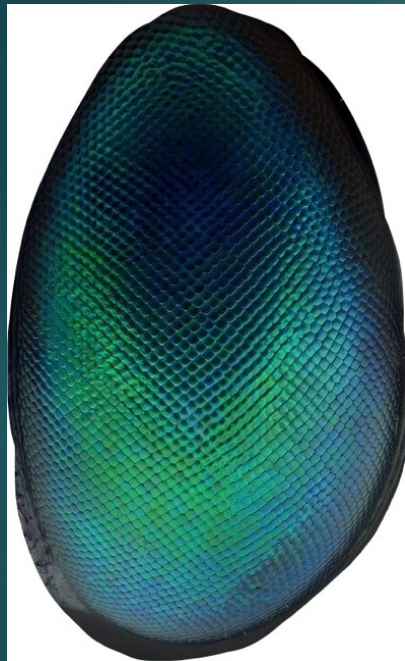
BACK



DETAILS



FABRICATION



FIFTH GARMENT

VEIL

Layers & layers of different materials of fabric is used to create this garment, reflecting multiple personas of an individual through the density and the opacity of the fabric



FRONT



SIDE & BACK



DETAILS



FABRICATION



SIXTH GARMENT

CAMOUFLAGE

A pouf ball gown made with the finest velvet fabric to give it a dense outlook topped off with organza sleeves pleated and underlined with a shimmery fabric to bring life into it.



FRONT



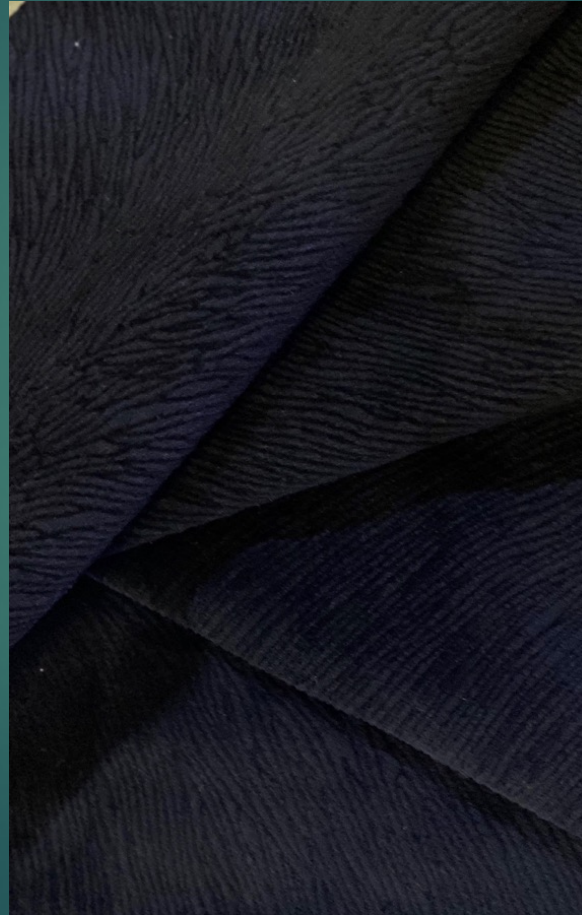
SIDE & BACK



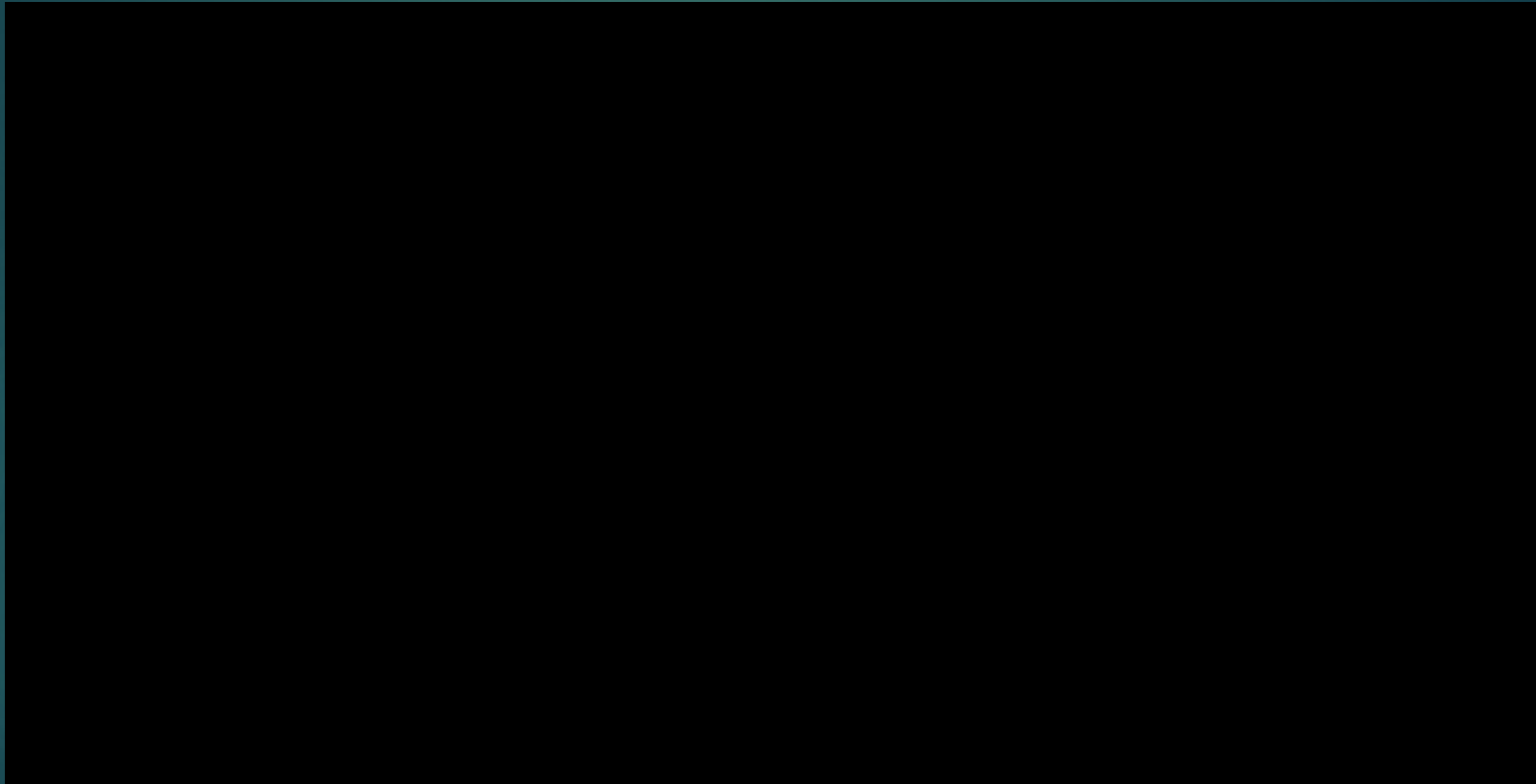
DETAIL



FABRICATION



VIDEO OVERVIEW





THANK YOU

MAHNOOR ASIF

F2014-105