



**BACHELORS IN JEWELLERY AND ACCESSORY DESIGN**

**SUBMITTED BY:**

NIMRA JAVED

F2016-401

**THESIS ADVISORS:**

Sana Aziz

Mahwah Salim

## Table of Contents

<b>Chapter 1</b> .....	<b>1</b>
Introduction .....	1
Purpose of study .....	1
Problem Statement .....	2
Research Objectives.....	2
Research Questions .....	2
Significant of Study .....	2
Background .....	3
Concept of Communal Living .....	4
Difference of communal living varies culture to culture .....	5
Communal system in our living .....	5
<b>Chapter 2</b> .....	<b>7</b>
Artist Work.....	7
Becky Crow .....	7
Asagi Maeda .....	8
Simeon Shomoy .....	9
Caroline Royal .....	11
Vicki ambery Smith .....	12
Lisa Watson .....	13
Joshua Ryan De Monte .....	14
Sarah Spalding .....	15
Danie Mellor .....	16
Yeonmi Kang .....	17
<b>Chapter 3</b> .....	<b>18</b>
Methodology.....	18
Piece 1.....	18
Piece 2.....	23
Piece 3.....	27
Piece 4.....	31

Piece 5 .....	35
Piece 6 .....	39
Piece 7 .....	43
Piece 8 .....	48
Piece 9 .....	53
<b>Bibliography .....</b>	<b>57</b>

## CHAPTER 1:

### Introduction:

### Purpose of the Study:

This research paper focuses on social perceptions and how their integration in our house lives changes the way we operate in different situation.

The purpose of the study is also to portray the beauty of communal living and how it add value to our lives despite the negative perception being faced by locality of certain communities. Through my studio practice, I intend to depict the positive elements of communal living in Ichhra Lahore. Inspiration for my primary work is derived from Ichhra area because of my own personal connections as a habituate of this place.

The study also serves the purpose of spreading awareness about the inner beauty of a person and not to judge by the outer look which is extremely competitive.

Though this work I hope to highlight and challenge the perceptions and preconceived notions of the few and encourage a dialogue about what effect these negative comment have. Through ongoing dialogue and reflection we may hope to build a community that welcomes each other's as they are regardless of their differences.

## Problem Statement:

Perceptions based on areas

Using the negative impacts of communal living, the perks (positive) elements are highlighted though jewelry pieces

## Research Objectives:

The present research has following objectives:

- To identified the traits of communal living
- To evolve perceptions towards the people of communal areas and their living.
- Show Ichhra communal living in my eye view.

## Research Questions:

The present research has following question:

- How can the strength of togetherness and values be portrayed through jewelry?

### Significance of the study:

Current study will be significant in its unique notion, as global fashion trends are changing rapidly; people want “uniqueness”. It will be exploratory in its nature as it brings two opposing notions together. The study is also significant in a manner that other researchers or designers can produce their works related to this theme with respect to history. It also spreads awareness of how people getting more advanced and competitive in the race. The study looks forward to enhance the aesthetics of jewelry inspired by the exterior and interior of old streets of Lahore, mainly symbolic references, fashion trends, specific technique, color palette, and top most design element.

### Background:

Personal journey of people judging you on the basis of your area, place, where you are coming from. If someone asks where do you live? Generally pass judgments without knowing who you are as a person. This mentality has been applied on numerous arguments made by the unwary people. Not only that, such mentality has also been applied on our daily lives, but also sometimes we even failed to notice it until we think deeply enough to analyze such erroneous ways.

Moving from Rawalpindi to Lahore and never being exposed to experience this stage. While looking the match for my eldest sister we faced so many comments about where we are living. The judgments passed on the family, education, norms and relationship. Backward thinking has many definitions but generally it refers to the type of thinking that is more attached to the

negative side. A typical thinking would always compare the past to the present when somebody faces a problem to find out what went wrong.

The study includes a personal experience, the inspirations and stories related to the study which plays a vital role. As a little girl growing up in combined family and later moving to Lahore for the betterment of my mother psychological health, my inspiration has been my sister. She was the first one who was suffering all these judgments. Whole life work on better education and good behavior but in the end people judge you where are you live, what are you wear.

### Concept of Communal living:

Human beings thrive in groups and communal living has been fundamental in their evolution, over the years. We all identify as the certain groups of people, referred to as a community

Through my work I would try to understand even though people living in a same society but due to difference in demographics, psychographics, political ideology and religious believe. To narrow down the spectrum of my work I would understand communal living in Lahore “Ichra” and how different communities with the society interact with each other.

Communal living self-explanatory defining group of people with similar interest come together as a group of people that follow a certain structure and way of living , known as a community.

Communal living has a lot to do with the cultural aspect of the area; it can be defined by geographical boundaries. Our culture is driven by three factors, religion, ethnicity and language. Which in terms drives the communal system of our society.

## Difference of communal living varies culture to culture:

The South Asian region from where we essentially are there are customs and traditions. Many of the countries have separate festivals and special in accordance to their country. There are also general customs and traditions within the region. For example in South Asia, people are known for their modest clothing and their eating choices based on their religion& ethnicities, whereas in European cultures, they dress differently.

So it can be derived that their way of communal living is different from other region. But there are common traits of a communal living ways. For instance harmony and unity is a basis of any communal system.

## Communal system in our Society:

To create the correlation of my topic with communal system first it is important to understand where this system is mostly practiced. For instance Lahore 'Ichhra" is taken into consideration as communal system is deeply embedded. This area of Lahore is specifically chosen for its moral values, religious practices, day-to-day activities, architecture and problems faced by the community.

Ichhra is home to one of the oldest and scared Hindu shrines, buildings and houses are very old and mostly in dilapidated condition, due to growing urbanization the streets are density and narrow. Being the budget center of buying things, a lot of activities are going on from morning to evening. People mostly have their shops on ground and are living in above floors. To describe the infrastructure the roads are quiet narrow it is next to impossible to move in a vehicles, streets hawkers can be seen and heard in homes. There are no proper electrical systems. Cluster of endless electrical wires can be seen hanging.



People living in the area believe in communal system. They are close to religion, moral values strong, strong communication, sharing and supportive to each other.

Key feature studied to derived elements for collection development

1. Architecture (Window Caving's)
2. Narrow cluster streets
3. Endless electrical Wires
4. Depilated Building
5. Chaos (bike and animal carts)

## Chapter 2:

### Artist Work

#### Becky Crow:

Becky crow has done tremendous work in jewelry & decorative pieces. Her major work inspiration was outdoor sceneries that are chronicle in nature and persistently providing her source of inspiration. She had used silver, copper & gold in her pieces. That beautifies her work.

In below displayed pictures, she hand made them with silver sheet, copper with 9ct gold and 22ct gold leaf for detailing. The metal is pierced out, then textures or patterns are applied to the surface using a rolling mill. These components are then layered together, soldered, and finished with matt, oxidized and polished surfaces to add depth and tone.

I has chosen Becky's work because of a specific narrative style, which helps her to create relativeness of her own work with Becky's work.



*Figure 1 testing the depth,  
sterling silver, 18ct lemon gold  
leaf, 45x45mm*



*Figure 2 in the tress, sterling silver,  
4cmx4cm, unframed*



*Figure 3 Zooming on zip wires,  
sterling silver, and 5cmx3cm*

### Asagi Maeda:

Asagi had targeted niche that love to wear pieces which are reflection of imaginary and unreal world. Asagi specialized in compartment living style, translate interior sea scenes and day dreaming as well. She was captivated by the urban living style, where people are restricted to small flats & life is hasty as well, moreover people's connectivity is low in city life as well.

She used metal & sculpture in her pieces, which reflects big city life. I has chosen her work for referencing communal life style.



*Figure 4 my relaxing moment, sterling silver, k18, chrysoprase, acrylic*



*Figure 5 Cycling ring, sterling silver, k18, chrysoprase, and acrylic*



*Figure 6 my relaxing time, sterling silver, k18, acrylic, blue, opal, enamel*

Simeon Shomoy:

Simeon shomoy has specialized in creating nature & fairy-tales character inspired wearables. His pieces are descriptive, which one can relate with childhood. People can relate with his work because they feel their hidden soul in his work

He has used silver & miniature scenes, where story telling across the surface of an earring and hanging out as a pendant

I has preferred her work because of the different material used in Simeon work



*Figure 7 Sweet home, sterling silver, pendant*



*Figure 8 Sunset planet, sterling sliver*



*Figure 9 the green planet, sterling silver, pendant,  
natural tree*

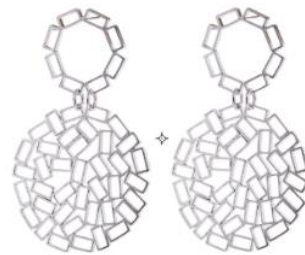
Caroline Royal:

Caroline is a designer whose work was influenced by the city life. Her focus was more on architecture, community & environmental issues from different eras which catered both past & present in a way that provide rich source of stimulation

I has chosen Caroline work because of her specialization in community aspects



*Figure 10 Ring, sterling silver*



*Figure 11 Earring, sterling silver*



*Figure 12 Pendant, sterling silver*

Vicki ambery Smith:

Vicki had specialized in renowned building architecture from around the globe. She beautifully designed pieces in such a way that are wearable for the architecture lover. Most of her pieces were hand made. She used silver in her pieces



*Figure 13 Temple of Jupiter, silver, red & yellow gold, 21/4x23/8*



*Figure 14 Globe Theater, silver. Red & yellow gold, width: 23/8*



*Figure 15 Two rings, 1999, silver, red & yellow gold 1x7/8 & 1x3/8 x1*

Lisa Watson:

Lisa Watson derived inspiration for her work from post-modernist architectural designs. She had used geometrical & mathematical proportioned angles with pop art color palette. Her pieces are mostly used as displayed elements as well.

I had chosen this artist because of the architectural work & the way she had used different color palettes.



*Figure 16 Containment collection, Landscape, acrylic*



*Figure 17 Containment collection, pendent, acrylic*



*Figure 18 Containment collection, Landscape, rings, acrylic*



Joshua Ryan De Monte:

Joshua had worked on architectural jewelry pieces with the digital & industrial processes. Her inspiration is on big scale wearable jewelry. One can feel the space of the architectural object after wearing these pieces



*Figure 19 Staircase collar, glass-filled polyamide flocking*



*Figure 20 Staircase bangle, glass-filled, polyamide, flocking*



*Figure 21 Arcade coil, glass-filled polyamide*

Sarah Spalding:

Sarah has used different pattern & structures of her city life in her jewelry pieces. She had repeatedly used parts to complete her pieces so they can be worn beautifully. She has used silver with plating & oxidizing techniques to beautify her elements



*Figure 22 Cubed collection, pendent*



*Figure 23 Cubic collection, brooch*



*Figure 24 Cubic collection, hair pin*

Danie Mellor:

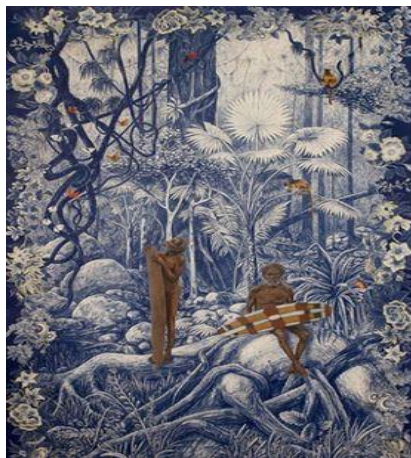
Mellor plays with different types of media to communicate his thoughts that include ceramics, printmaking, sculpture, and mixed media works on paper and object-based installation. Most of his work is focused on art and visuals that depicts the historical intersections and relationships between indigenous and Western cultures.



*Figure 25 Culture warrior 2008 pastel, pencil, glitter, Swarovski crystal & wash on Saunders Waterford paper 147.0x195.0*



*Figure 26 Exotic lies & scared ties 2008 installation: pastel, pencil, glitter, Swarovski crystal & wash on paper, framed with mosaic china, taxidermy animals and painted wood 325.0x325.0x130.0cm*



*Figure 27 A Reflective moment 2012 pastel, pencil, glitter, Swarovski crystal wash on Saunders Waterford paper 145.0x95.0cm*

Yeonmi Kang:

Yeonmi has worked on the transformation of her personal fantasies and dreams to human condition into three-dimensional object jewelry. She has used symbolic way to question human fate. Yeonmi wants to be an observer of balancing the unbalanced, i.e: the world and own self.



*Figure 28 Broach*



*Figure 29 Broach*



*Figure 30 Broach*

## Chapter 3:

### Methodology:

#### Piece 1:

The term 'community life' means living in the same residence for the convenience of living. Communal life is all about the communal areas where people live together as a community. Usually, a communal area is congested or glutted. Keeping in mind the main idea of communal living, I fabricated jewelry piece that reflects the beauty and colors of these congested areas.

My first piece is a wearable body piece; a bangle, in which I casted two cars that were found object. Electric poles were made with square wire that represented a true color of communal areas. Silver sheet was molded in a round shape to form a bangle and in addition two silver ring bangles were made with silver wires to attach the rest of the body with the bangle. Buildings with different textures and forms were made with a true inspiration from some of the buildings from Icchra that were colorful and congested to portray a realistic image. Buildings were made with MDF wood with laser cutting and engraving, they were painted with acrylic paints for a beautiful pigment. All the metal was plated with steel bright plating.



*Figure 31 silver sheet*



*Figure 32 grinding*



*Figure 33 finishing*



*Figure 34 soldering*



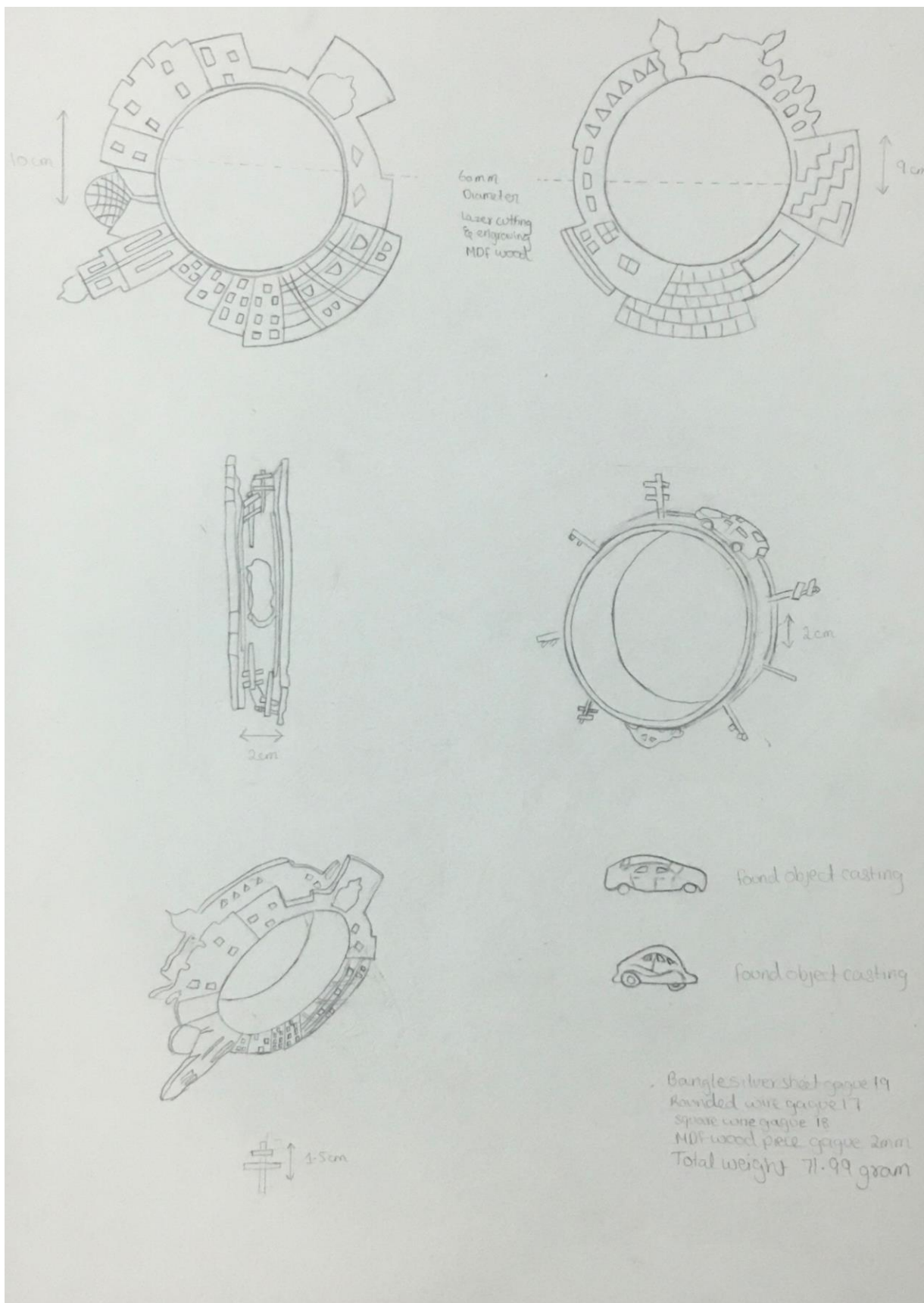
*Figure 35 after soldering*



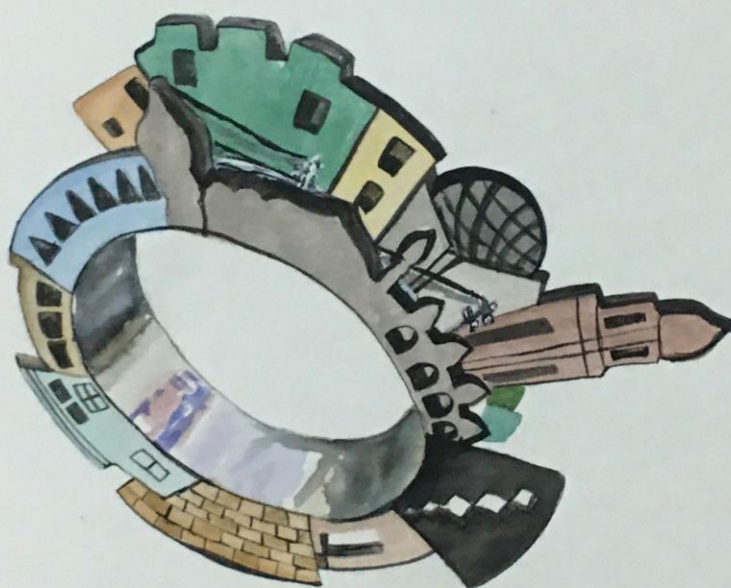
*Figure 36 final piece*











## Piece 2

A community is all about communication of people and their interaction. People who live in such areas have their specific spots where they meet and communicate about their lives. Also known as '**Addas**', these spots are very famous among the people in these areas.

Taking inspiration from this idea, my second came into being. In this piece scooters and bicycles are casted. Then a ring shank was made on which the scooters and bicycles were soldered in a congested way just like they're parked there along with the footpaths. And then casted figures of tiny human beings were soldered on the bicycle in different postures. Then the whole piece was plated with steel bright plating and gold plating.



*Figure 37 circle*



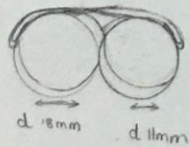
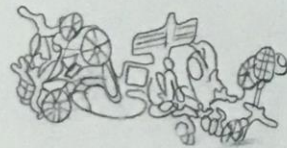
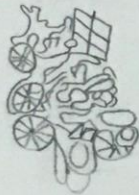
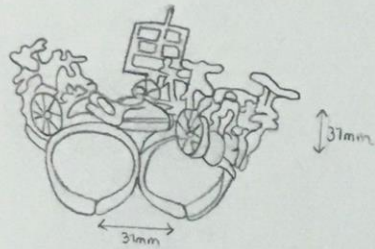
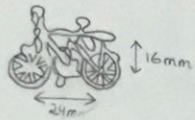
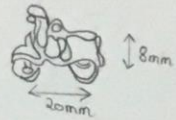
*Figure 38 Ring shrank*



*Figure 39 soldering*



*Figure 40 final piece*



Cast Cycle piece: 4  
 Cast skuter piece: 1  
 Ring shrink gauge: 12  
 Square wire gauge: 13  
 Total weight 28.31





### Piece 3:

Third piece of this concept was made by taking inspiration from the grills that are used in the doors and windows of the old styled houses in the communal areas. Different patterns were observed and then made into a beautiful pendant. This pendant is wearable. This pendant was made of silver and the chain and hinges are made of copper. Acrylic printed image is used in this piece that metaphorically represents that we should look on the other side of the grills and see how beautiful and nice these people are. This piece was made totally on the CAD. Finishing was done and at the end the piece was plated with steel bright plating and gold plating.

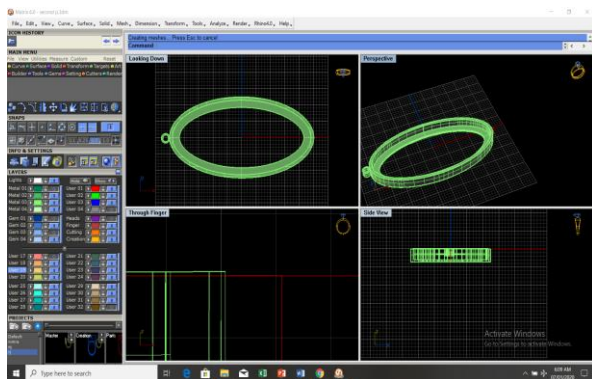


Figure 41 pendant

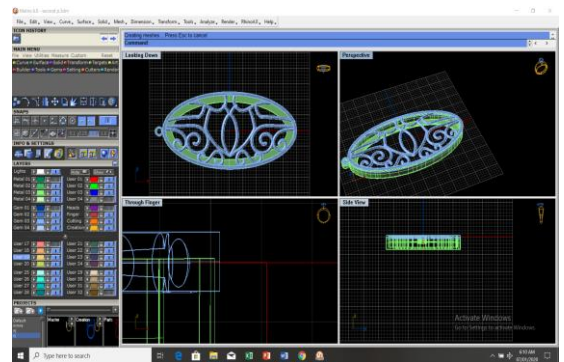


Figure 42 cad making



Figure 43 hinges and loop slider



Figure 44 filing



*Figure 45 planting*



*Figure 46 acrylic printing*



*Figure 47 planting*



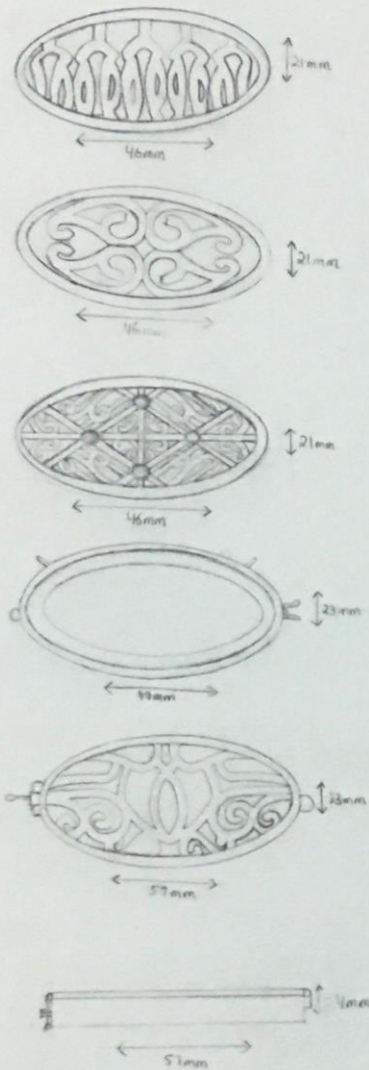


fig. 201  
fig. 202 2mm



Silver plated steel gauge: 26  
 gold plated steel gauge: 26  
 gold plated steel gauge: 24  
 silver plated steel gauge: 21  
 silver plated steel gauge: 21  
 Total weight: 19.35 grams





#### Piece 4:

The fourth piece of the concept elaborates the communal living a little bit more. The piece was made by inspiration from the drawers, the way they open and shut. The piece depicts the congested living style is when you pass out of a home and you can smell the aroma of the food that is being cooked in one of the houses in that congested area

In the making, the piece was totally made on CAD. The piece is casted in silver. Finishing was done by filing and sanding. The piece is plated in steel bright plating and gold plating.

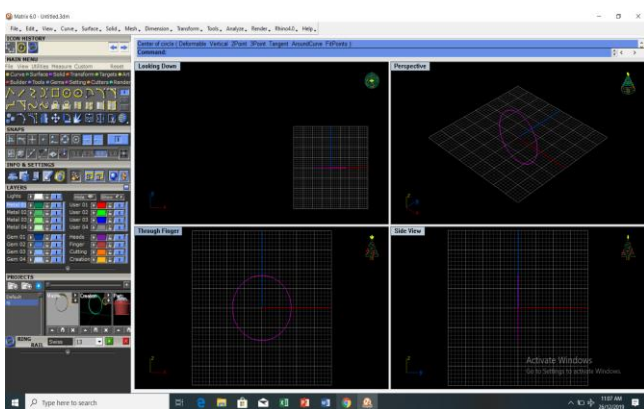


Figure 48 cad making #1

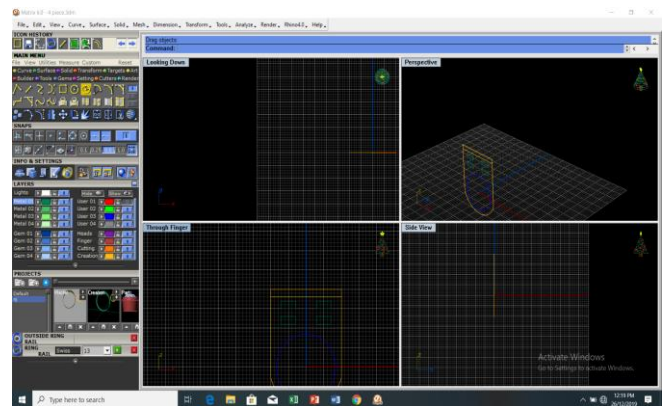


Figure 49 cad making #2

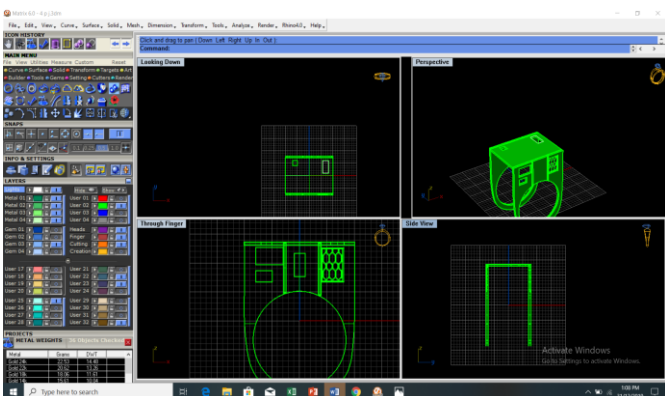


Figure 50 cad making # 3

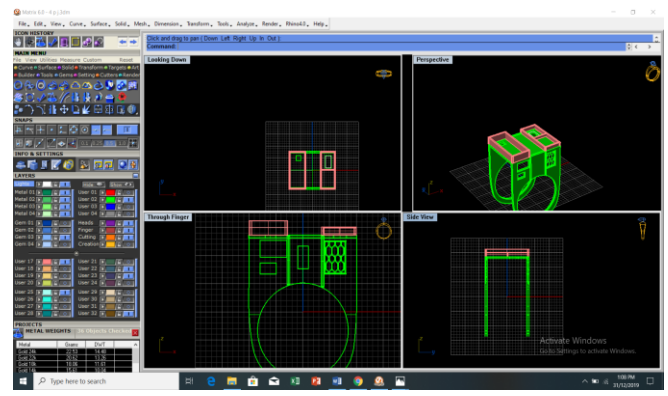


Figure 51 cad making #4

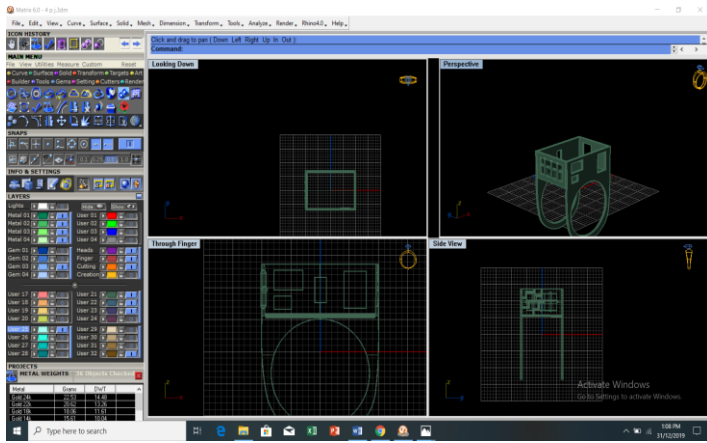


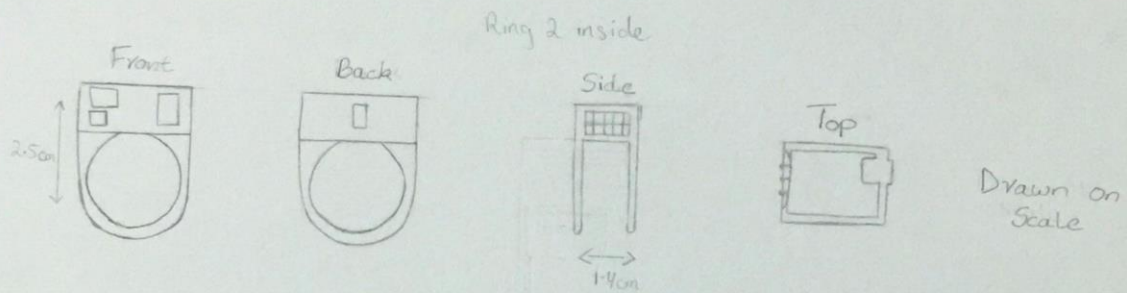
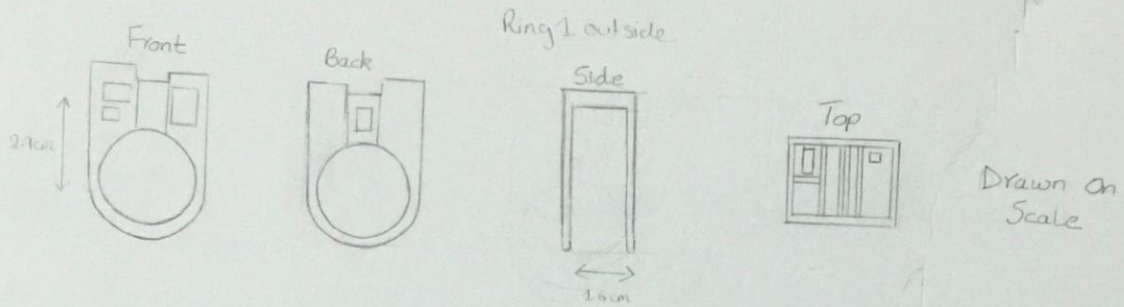
Figure 52 cad making #4



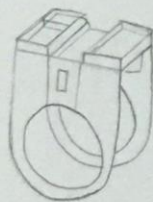
Figure 53 ring



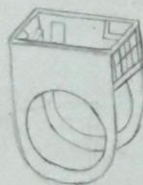
Figure 54 ring final look



Perspective

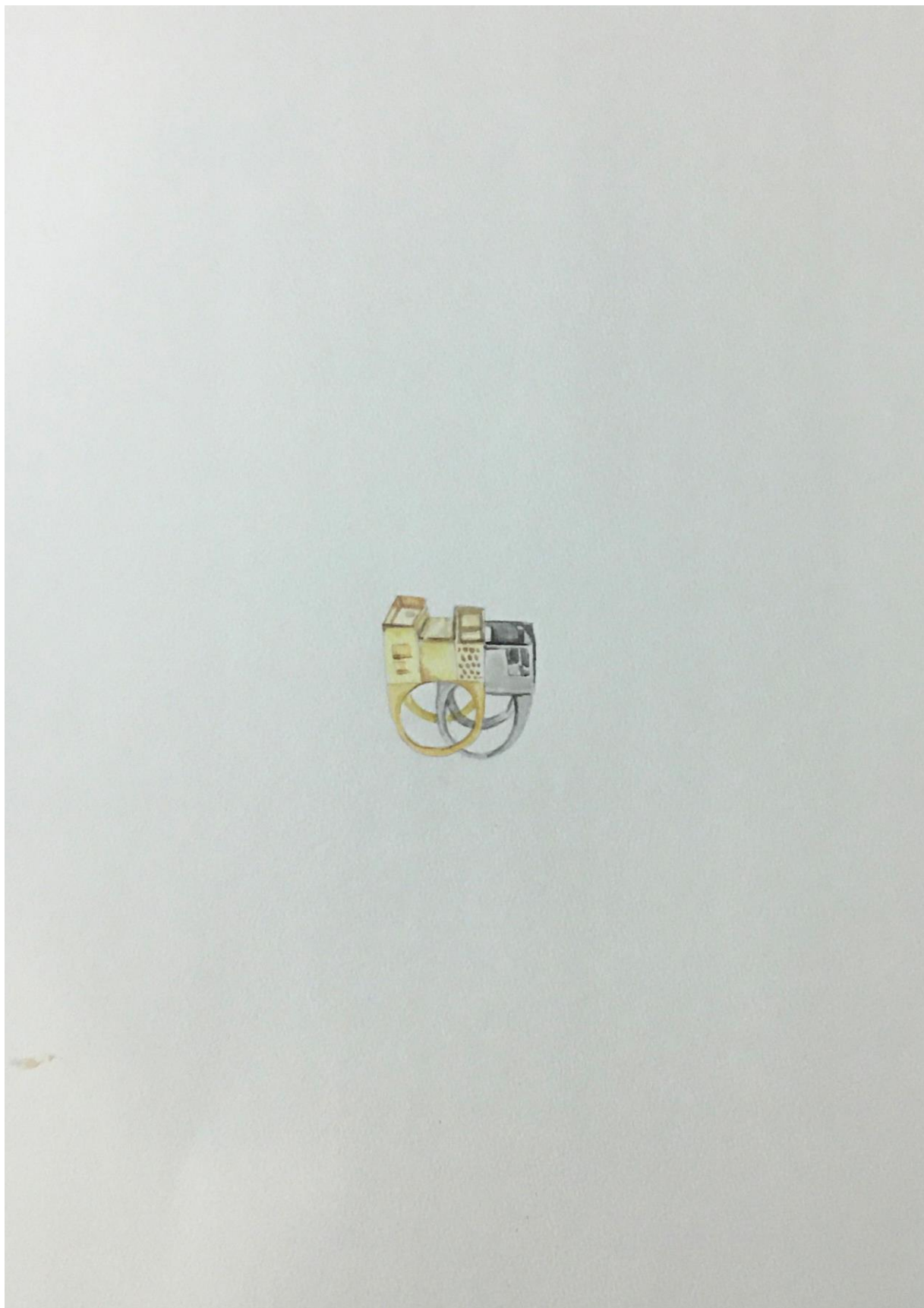


Perspective Drawing



Diameter of ring shank 13  
 Drawn on Scale  
 Ring 1 gauge .10  
 Ring 2 gauge .6  
 Weight: 9.24g





## Piece 5:

The fifth piece of the concept explains the communal living a bit more. The way these houses and their roofs are connected represents that the people of communal areas are also connected in the same way; emotionally

In the making, the piece was totally made on CAD. The piece is casted in silver. Fabrication; fishing was done by hand The piece is plated in steel bright plating.

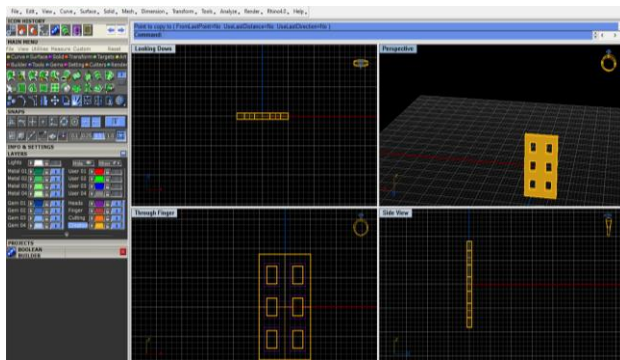


Figure 54 cad making #1

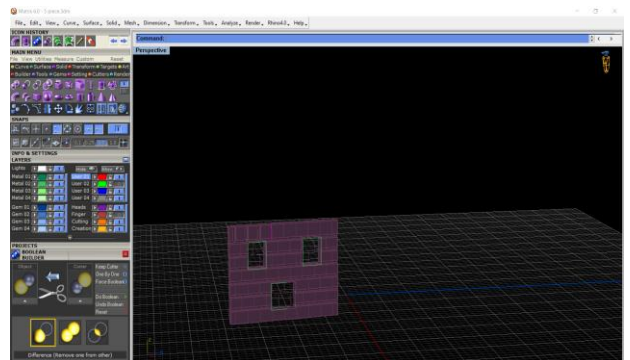


Figure 55 cad making #2

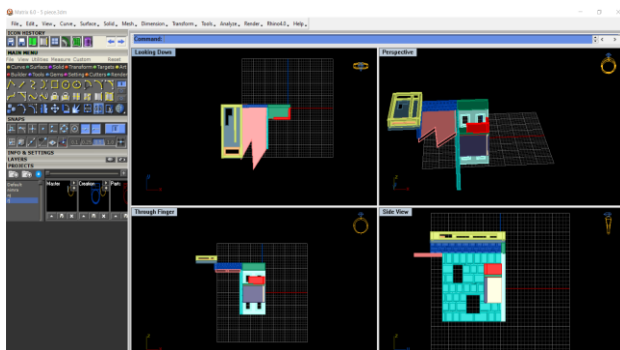


Figure 56 cad making #3

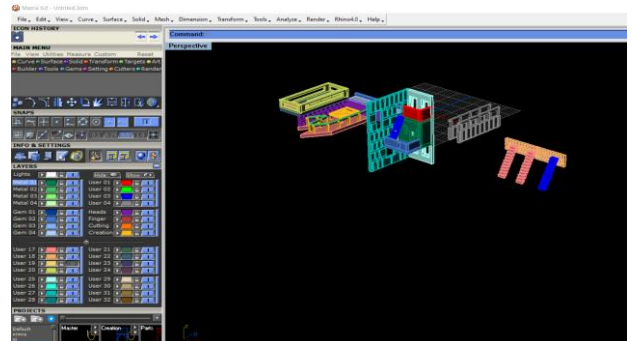


Figure 57 cad making #4

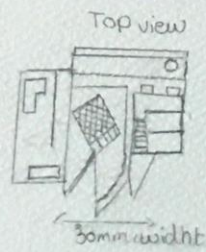
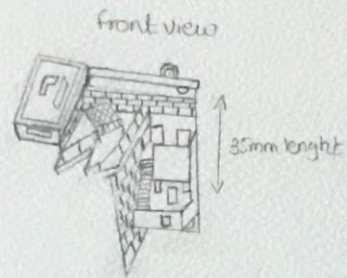


*Figure 58 plating*



*Figure 59 plating#2*





Different Silver sheet  
gauge is 11, 0.9,  
0.6, 1.2

Total weight 25.00 gram  
casting





## Piece 6

For this piece the fruit and vegetable trolley outside a house inspired me. I made a table piece in which I depict that when someone come at your place for Rishta they make up their minds by looking at the surroundings instead of a person's personality.

I make Oranges with terracotta clay and then paint with acrylic it take 24 hours to dry it. In the making, the piece was done on CAD. The piece is cast in silver. Finishing was done by filing and sanding. The piece is plated in steel bright plating.

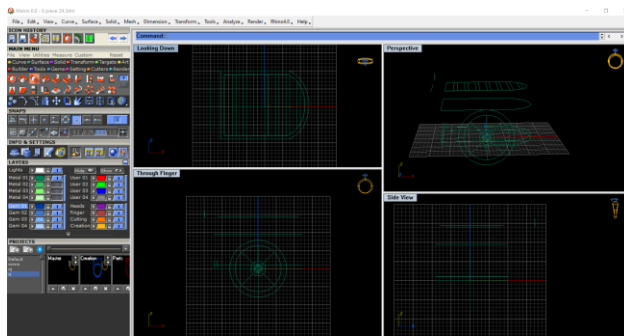


Figure 58 cad making #1

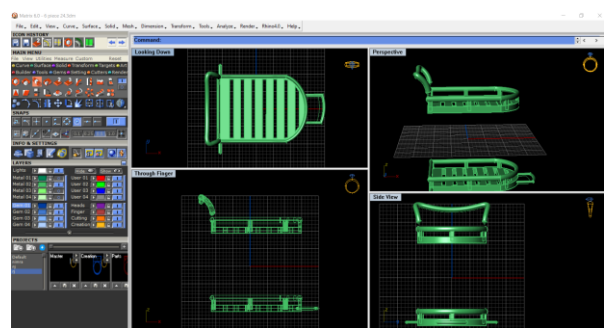


Figure 59 cad making #2

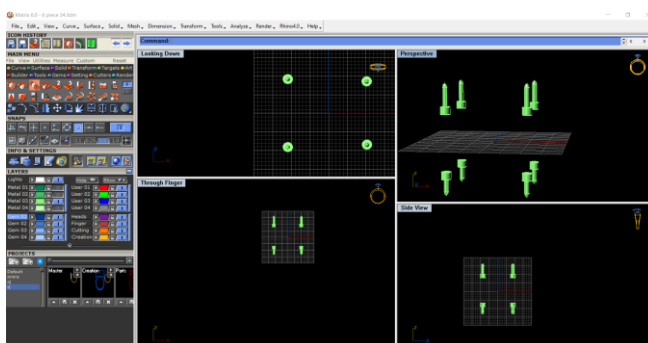


Figure 60 cad making #3

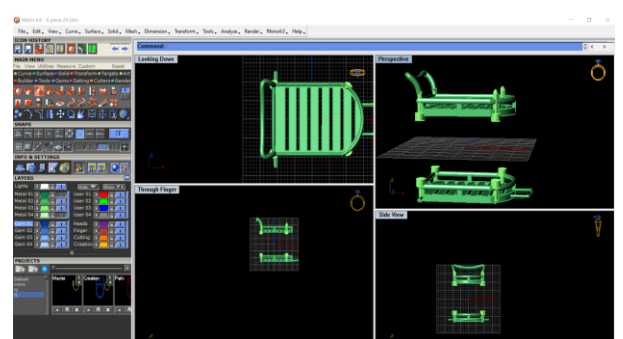


Figure 61 cad making #4



*Figure 62 making oranges with terracotta clay*



*Figure 63 acrylic paint*



*Figure 64 table piece*



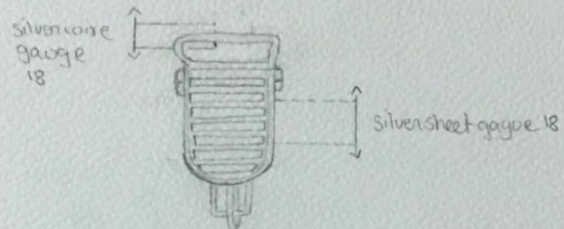
*Figure 65 table piece*



side view

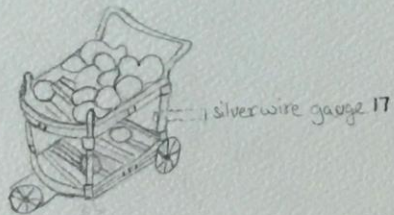


Top view



back view

11mm width



Total weight 18.74 gram.  
Casting



### Piece 7:

The seventh piece explain the concept that how people are connected with food. People of the Ichhra are very joyful; jolly and cheerful. Because they celebrate every festival with each other. In the month of Rabi-ul-awal, food distribution are very important value. They distribute food in kid, adult, younger and old age fellow. Most people stand in their main gate of the house and they raise their voices balo Kurri you cheer wandu layiyao.

I try to make a rice's with terracotta clay but it not became a realist rice so I take a raw rice's; dry it with food color to show Mahajan rice's red, yellow, and green color are used in Mahajan rice's.

Piece was made in cad and finishing was done by manually .piece also buffed it.

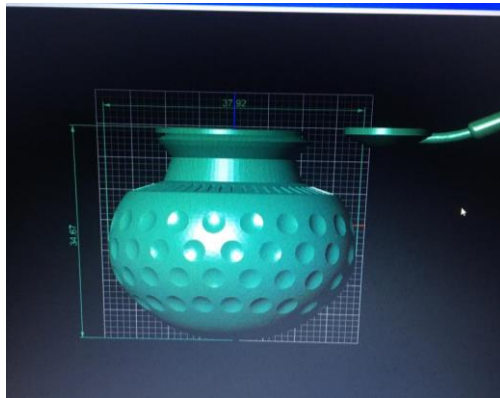


Figure 66 cad making #1



Figure 67 cad making #2



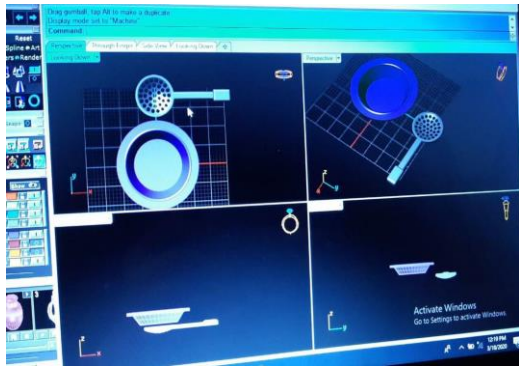


Figure 68 cad making #3



Figure 69 wax form



Figure 70 casting form



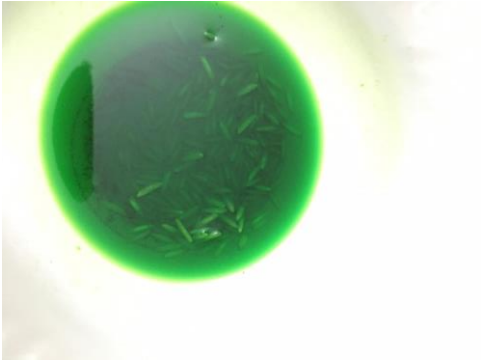
Figure 71 filling



Figure 72 sanding



Figure 73 terracotta clay



*Figure 74 drying raw rice's with food color*



*Figure 75 after drying*

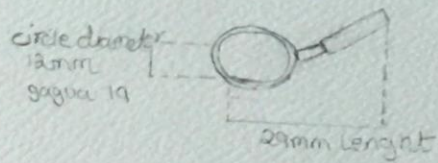
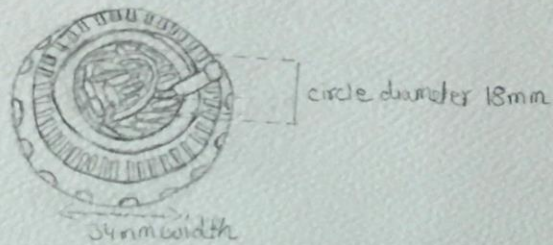
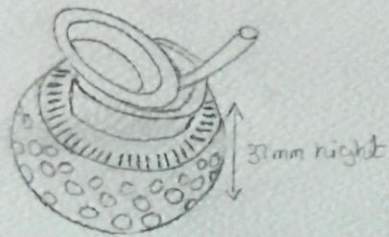


*Figure 76 final look*



*Figure 77 table piece*





wires gauge: 15, 11  
 depth gauge: 15  
 depth weight: 31 gram  
 use raw rice dye  
 with food colour  
 Total weight: 43.35 gram



## Piece 8

I am inspired for eight piece by trust of people to each other. But how, people of Ichhra mostly open their door all the day, because they knows their neighbors and surrounding people to give a special attention on their gates. Who's one going to inside and whose one's come to outside the house.

The piece was made in CAD. After casting the broach pin and loop was fabricated; finishing done by manually

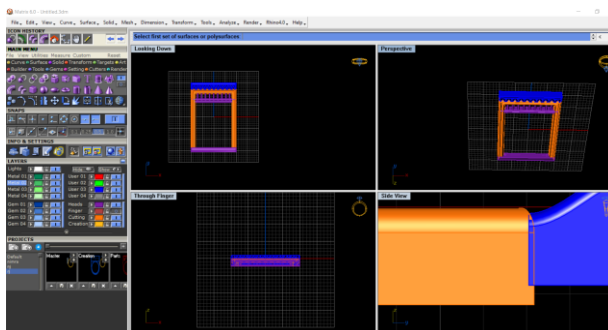


Figure 78 Cad # 1

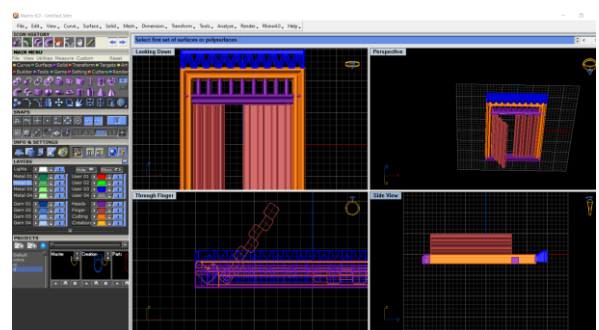


Figure 79 Cad # 2

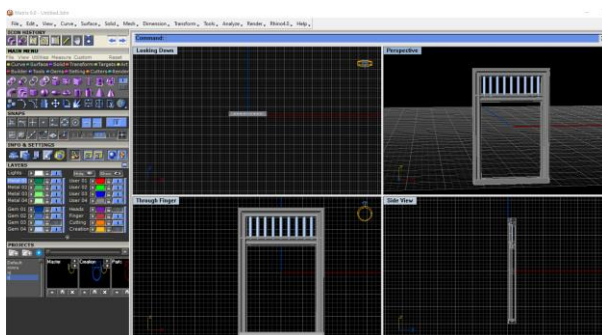


Figure 80 Cad # 3

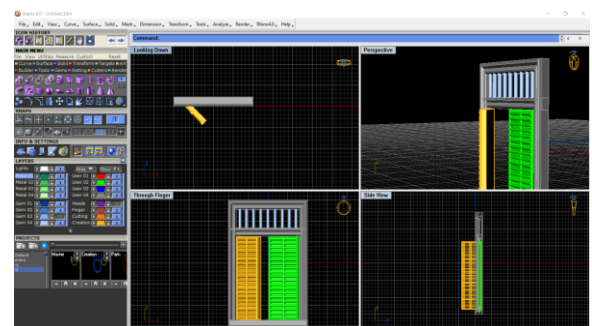


Figure 81 Cad # 4



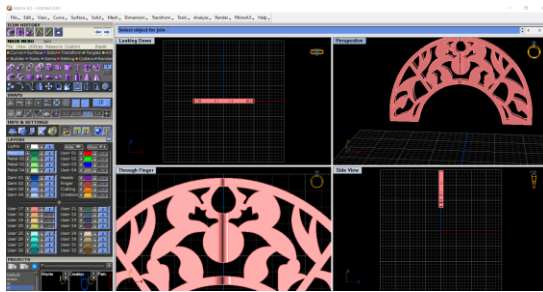


Figure 82 cad # 5



Figure 83 Cad # 6

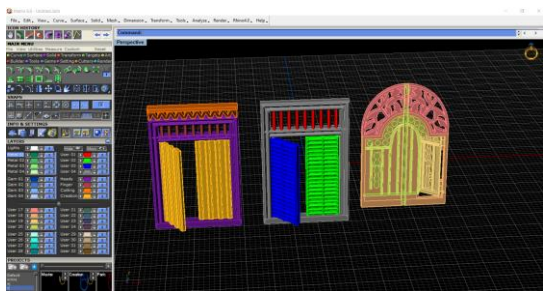


Figure 84 Cad # 7

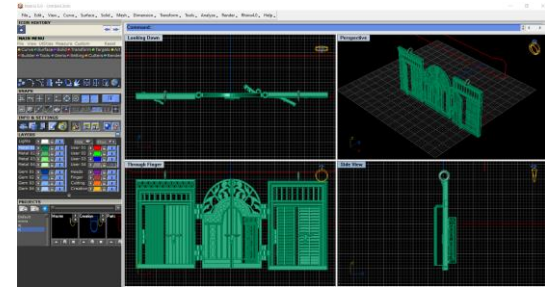


Figure 85 Cad # 8

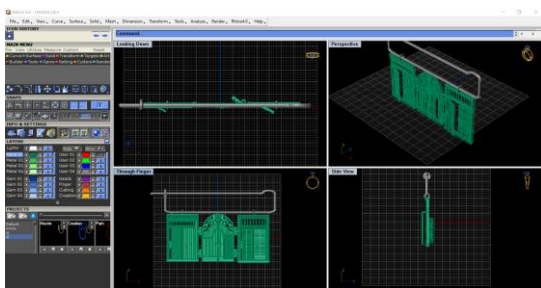


Figure 86 Cad # 9



Figure 87 after casting



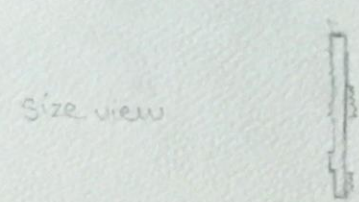
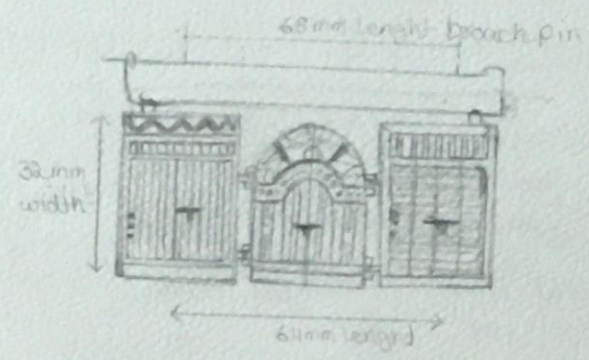
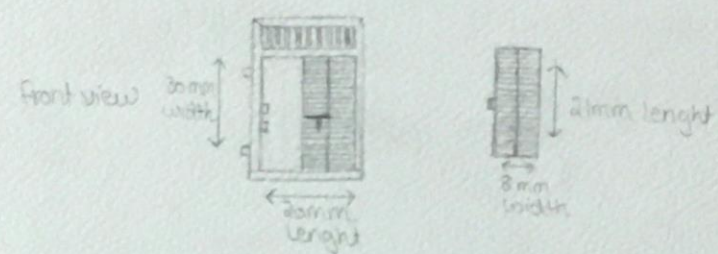
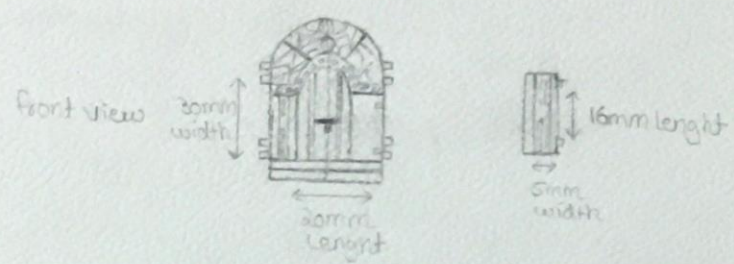
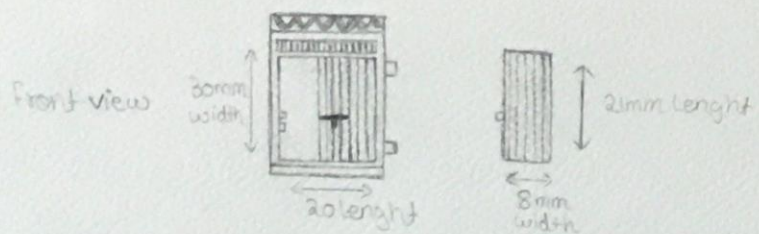
Figure 88 after making pin and fitting



Figure 89 fishing

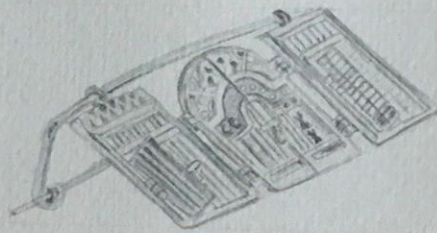


*Figure 87 final look*



Piece weight 21.23g  
 brooch pin gauge 19  
 silver casting







## Piece 9:

Ninth piece of this concept was made by taking inspiration from the mosque. Most of people inspire the mosque art and design, because they morally attach with their religious. That's why old houses inspire from mosque design and art. Ichhra area are very congested and every street corner, you can see the mosque. This piece was made in CAD. After casting the broach pin and loop was fabricated; finishing done by hand.

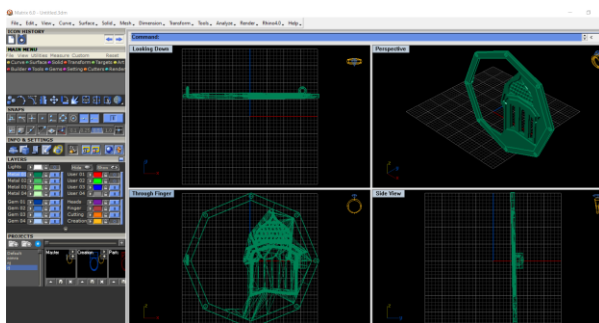


Figure 90 cad making # 1

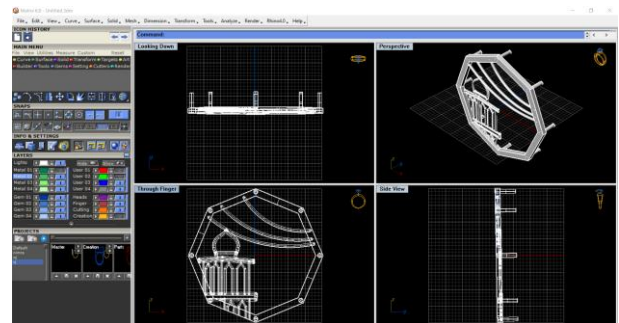


Figure 91 cad making # 2

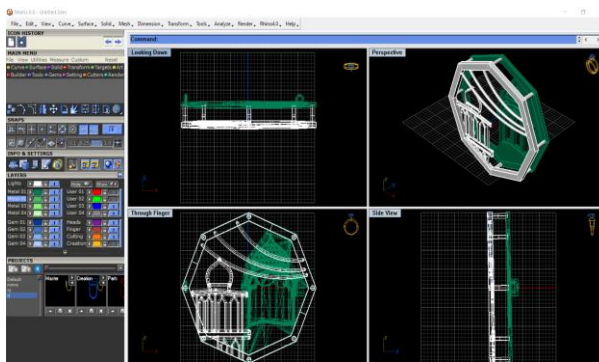


Figure 92 cad making # 3

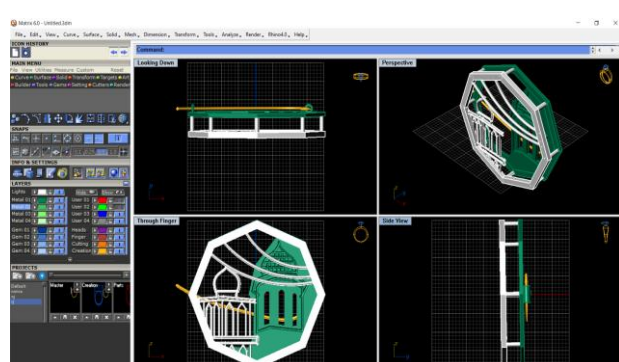
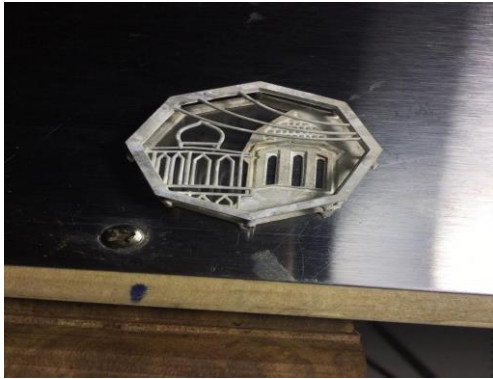


Figure 93 cad making # 4



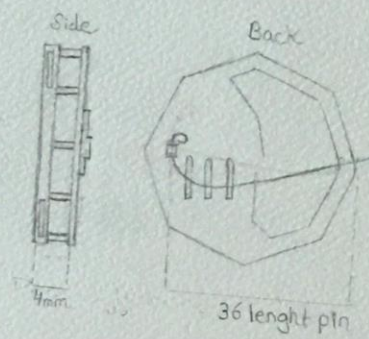
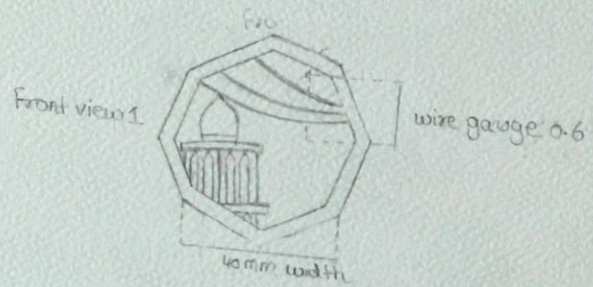
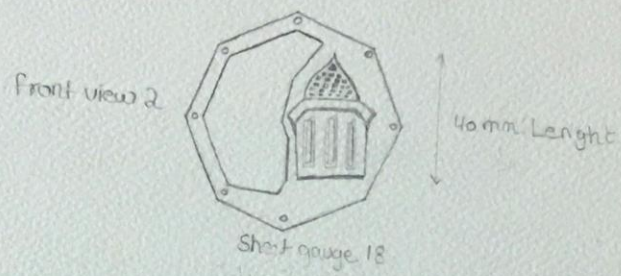
*Figure 94 casting*



*Figure 95 fabricated & fishing by manually*



*Figure 96 final look of broach*



Piece weight 14.71 gram.  
 casting  
 brooch pin gauge 19





## **Bibliography:**

[file:///F:/univristy%204%20year%20work/semester%208/thesis%20designer%20work/New%20folder%20\(2\)/New%20folder%20\(3\)/Article-4-Visualizing.pdf](file:///F:/univristy%204%20year%20work/semester%208/thesis%20designer%20work/New%20folder%20(2)/New%20folder%20(3)/Article-4-Visualizing.pdf)

[file:///F:/univristy%204%20year%20work/semester%208/thesis%20designer%20work/New%20folder%20\(2\)/New%20folder%20\(3\)/Urbanization%20and%20its%20Impacts%20on%20Founded%20Areas.pdf](file:///F:/univristy%204%20year%20work/semester%208/thesis%20designer%20work/New%20folder%20(2)/New%20folder%20(3)/Urbanization%20and%20its%20Impacts%20on%20Founded%20Areas.pdf)

[file:///C:/Users/NIMRA/Desktop/New%20folder%20\(2\)/Article-4-Visualizing.pdf](file:///C:/Users/NIMRA/Desktop/New%20folder%20(2)/Article-4-Visualizing.pdf)

<http://sarah-spalding.blogspot.com/>

<http://fashionldn.blogspot.com/2012/06/lisa-watson-for-profile-magazine.html>

<http://www.mobilia-gallery.com/artists/asagi-maeda/>

<https://www.ganoksin.com/article/the-architectural-portraits-of-vicki-ambery-smith/>

<https://www.houseandgarden.co.uk/gallery/interiors-specialist-vicki-ambery-smith-silverwork>

<https://daniemellor.com/>

<https://tolarnogalleries.com/artists/danie-mellor/>

<https://www.mca.com.au/artists-works/artists/danie-mellor/>

<https://www.linkedin.com/company/caroline-royal-contemporary-jewellery/about/>

<http://simoshomov.com/>

<https://www.charonkransenarts.com/artists/kang.html>

<https://www.beckycrow.co.uk/>